

WAAS CH 78144	APP CRS 053°	Rwy Ldg TDZE Apt Elev	7543 716 716
W05A			

RNAV (GPS) RWY 5

WILLOW RUN (YIP)

RNP APCH - GPS.

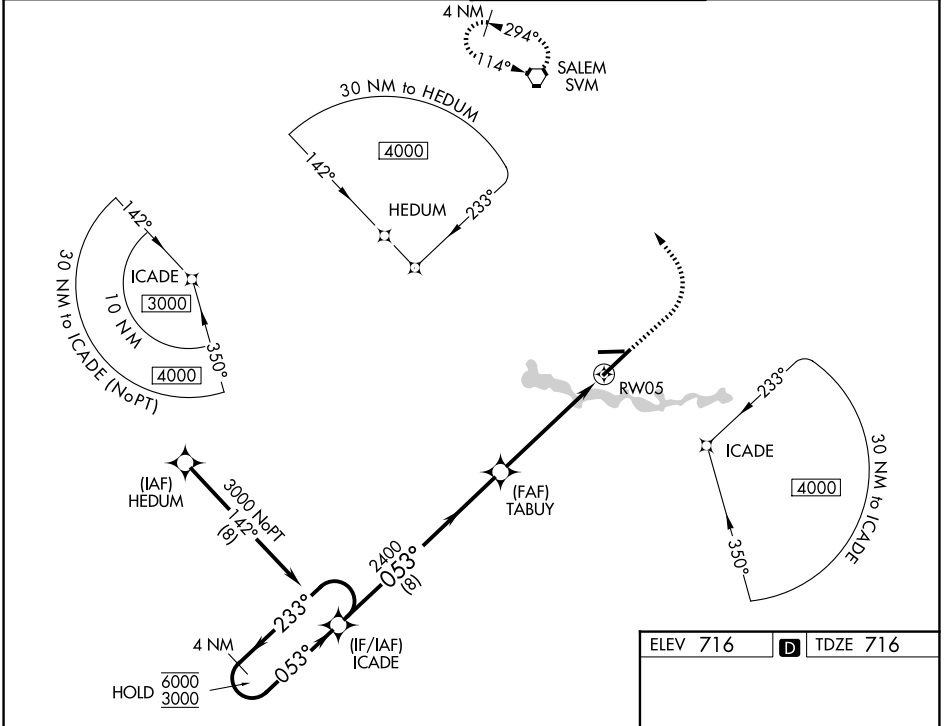
▼ For uncompensated Baro-VNAV systems, LNAV/VNAV NA below -19°C or above 54°C. For inop ALS, increase LNAV/VNAV all Cats visibility to RVR 6000, LNAV Cats C/D visibility to 1 3/8 SM.

MALSR



MISSED APPROACH: Climb to 1200 then climbing left turn to 3000 direct SVM VORTAC and hold.

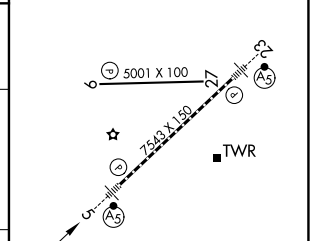
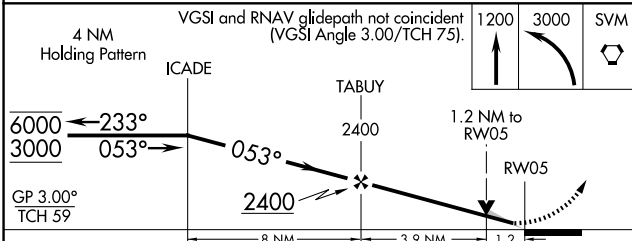
ATIS 127.425	DETROIT APP CON 118.95 284.0	WILLOW RUN TOWER 125.275 256.9	GND CON 119.975
------------------------	--	--	---------------------------



EC-1, 14 MAY 2026 to 11 JUN 2026

EC-1, 14 MAY 2026 to 11 JUN 2026

ELEV 716	D TDZE 716
----------	-------------------



CATEGORY	A	B	C	D
LPV DA	916/18 200 (200-1/2)			
LNAV/VNAV DA	1121/40 405 (500-3/4)			
LNAV MDA	1200/24	484 (500-1/2)	1200/50	484 (500-1)
CIRCLING	1220-1	504 (600-1)	1220-1 1/2	1400-2 1/4
			504 (600-1 1/2)	684 (700-2 1/4)

TDZ/CL Rwy 5
HIRL Rwy 5-23
MIRL Rwy 9-27