

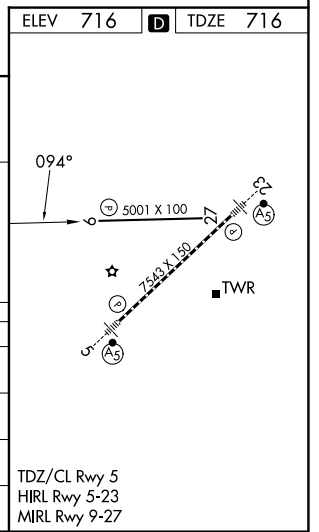
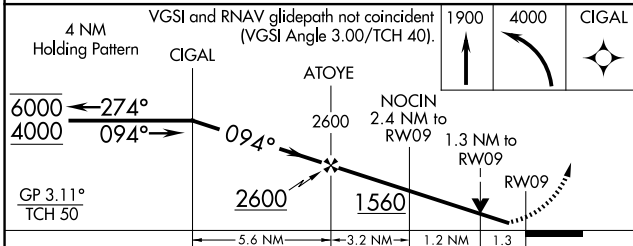
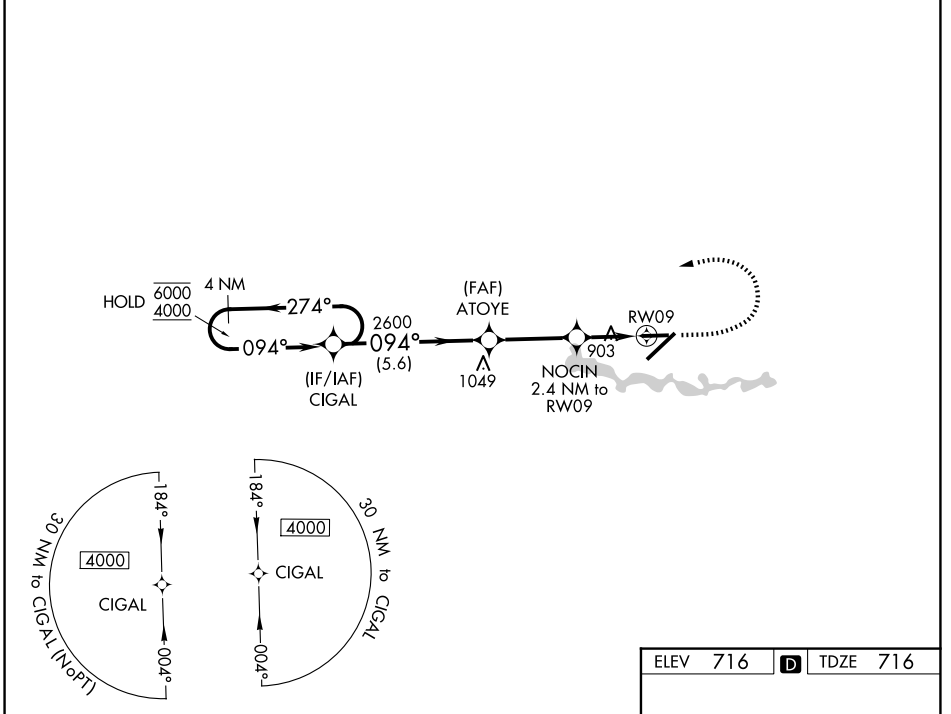
WAAS CH <b>73035</b> <b>W09A</b>	APP CRS <b>094°</b>	Rwy Ldg TDZE Apt Elev	<b>5001</b> <b>716</b> <b>716</b>
--	------------------------	-----------------------------	---

# RNAV (GPS) RWY 9

WILLOW RUN (YIP)

RNP APCH - GPS.	MISSED APPROACH: Climb to 1900 then climbing left turn to 4000 direct CIGAL and hold, continue climb-in-hold to 4000.
<b>▼</b> Rwy 9 helicopter visibility reduction below 3/4 SM NA. For uncompensated Baro-VNAV systems, LNAV/VNAV NA below -21°C or above 54°C.	

ATIS <b>127.425</b>	DETROIT APP CON <b>118.95 284.0</b>	WILLOW RUN TOWER <b>125.275 256.9</b>	GND CON <b>118.975</b>
------------------------	--	--	---------------------------



CATEGORY	A	B	C	D
LPV DA		966-3/4	250 (300-3/4)	
LNAV/VNAV DA		1201-13/8	485 (500-13/8)	
LNAV MDA	1160-1	444 (500-1)	1160-13/8	444 (500-13/8)
CIRCLING	1220-1	504 (600-1)	1220-1 1/2	1400-2 1/4
			504 (600-1 1/2)	684 (700-2 1/4)

EC-1, 14 MAY 2026 to 11 JUN 2026

EC-1, 14 MAY 2026 to 11 JUN 2026

TDZ/CL Rwy 5  
HIRL Rwy 5-23  
MIRL Rwy 9-27