

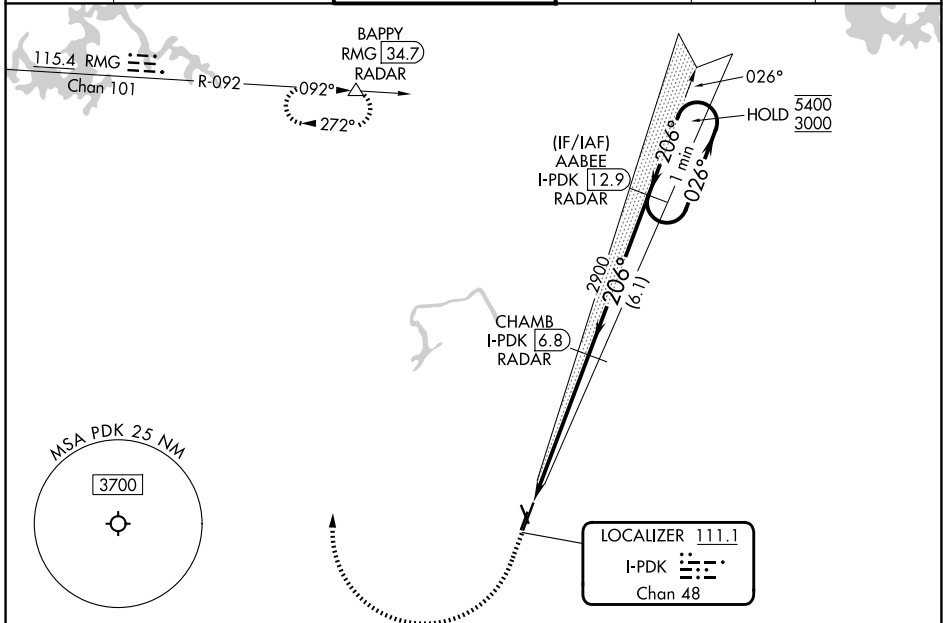
LOC/DME I-PDK 111.1 Chan 48	APP CRS 206°	Rwy Ldg TDZE 991 Apt Elev 998
--	------------------------	---

ILS or LOC RWY 21L

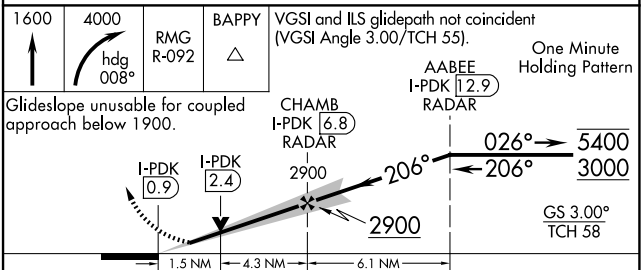
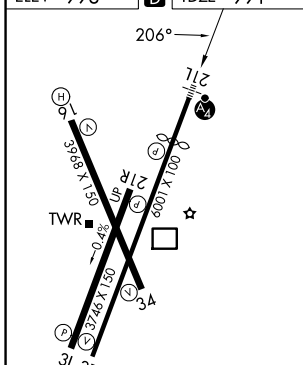
DEKALB-PEACHTREE (PDK)

RADAR required for procedure entry. DME or RADAR required.		MALSF 	MISSED APPROACH: Climb to 1600 then climbing right turn to 4000 on heading 008° and on RMG VORTAC R-092 to BAPPY/RMG 34.7 DME/RADAR and hold.
Circling Rwy 16, 34 NA at night. Rwy 21L helicopter visibility reduction below RVR 4000 NA.			

ATIS 128.4	ATLANTA APP CON 126.975 239.275	PEACHTREE TOWER ★ 120.9 (CTAF) 281.5	GND CON 121.6	UNICOM 122.95	120.0
----------------------	---	--	-------------------------	-------------------------	--------------



ELEV 998	D	TDZE 991
----------	----------	----------



CATEGORY	A	B	C	D
S-ILS 21L	1330/40		339 (400-3/4)	
S-LOC 21L	1520/40	529 (600-3/4)	1520-1/4	529 (600-1/4)
CIRCLING	1520-1 522 (600-1)		1840-2 1/2 842 (900-2 1/2)	2060-3 1062 (1100-3)

FAF to MAP 5.8 NM					
Knots	60	90	120	150	180
Min:Sec	5:48	3:52	2:54	2:19	1:56

SE-4, 14 MAY 2026 to 11 JUN 2026

SE-4, 14 MAY 2026 to 11 JUN 2026