

PERU, INDIANA

ILS or LOC RWY 5

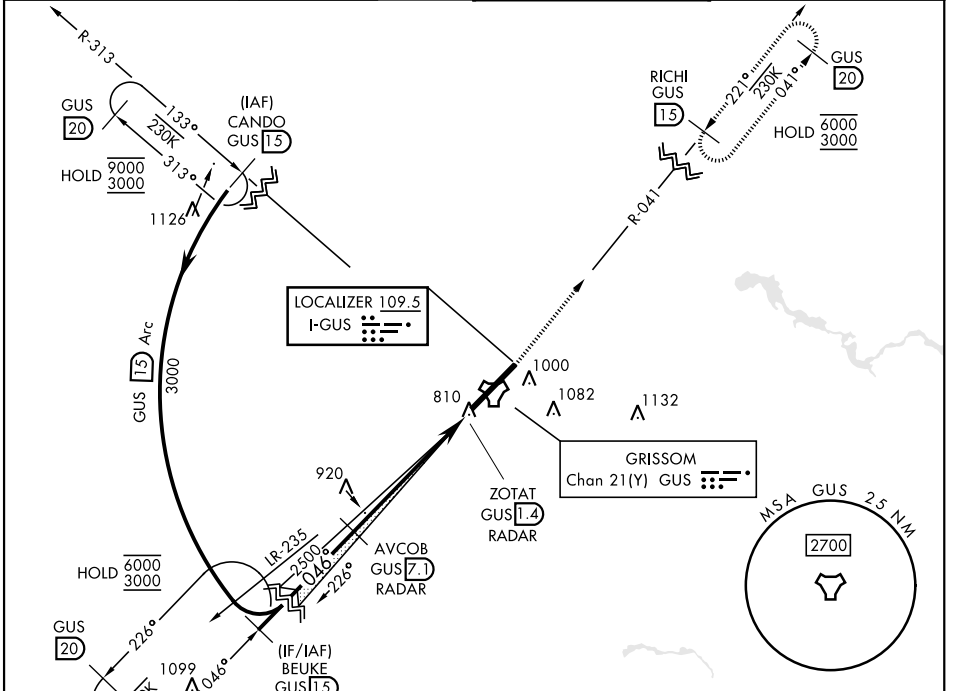
LOC I-GUS 109.5	APCH CRS 046°	Rwy Idg 12,501
		TDZE 811
		Arprt Elev 811

[USAF]

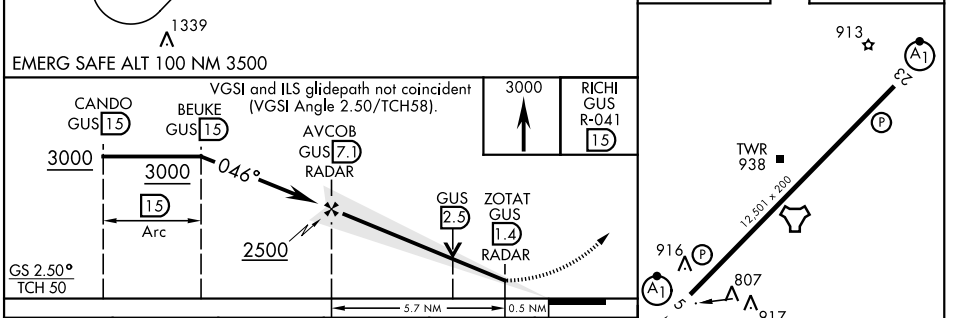
GRISSOM ARB (KGUS)

RADAR, TACAN required		ALSIF-1 	MISSED APPROACH: Climb to 3000 on the GUS TACAN R-041 to RICHI and hold. *When ALS inop, increase RVR to 40 and vis to 3/4 mile. **When ALS inop, increase CAT AB RVR to 55 and vis to 1 mile; CAT CDE vis to 1 3/8 miles.
-----------------------	--	-------------	--

ATIS 132.55 270.8	APP CON 121.05 351.8 (E) 123.85 291.675 (W)	TOWER ★ 133.7 290.45	GND CON 128.425 275.8
-----------------------------	---	--------------------------------	---------------------------------



ELEV 811	TDZE 811
----------	----------



EMERG SAFE ALT 100 NM 3500	VGSI and ILS glidepath not coincident (VGSI Angle 2.50/TCH58).					RICHI GUS R-041 15									
CANDO GUS 15	BEUKE GUS 15	AVCOB GUS 7.1	ZOTAT GUS 1.4	ZOTAT GUS 2.3		TWR 938									
GS 2.50° TCH 50	3000 Arc		5.7 NM			12.501 x 200									
CATEGORY	A	B	C	D	E	HIRL Rwy 5-23									
S-ILS 5 *	1011/24		200	(200-1/2)		FAF to MAP 5.7 NM									
S-LOC 5 **	1280/24	469 (500-1/2)	1280/50	469 (500-1)		Knots	60	90	120	150	180				
CIRCLING	1340-1	529 (600-1)	1400-1 1/2	589 (600-1 1/2)	1400-2	589 (600-2)	629 (700-2 1/4)	1440-2 1/4	629 (700-2 1/4)	Min:Sec	5:42	3:48	2:51	2:17	1:54

PERU, INDIANA 40°39'N-86°09'W GRISSOM ARB (KGUS)

Amtd 9 11AUG22

ILS or LOC RWY 5

EC-2, 14 MAY 2026 to 11 JUN 2026

EC-2, 14 MAY 2026 to 11 JUN 2026