

PERU, INDIANA

# TACAN or VOR RWY 5

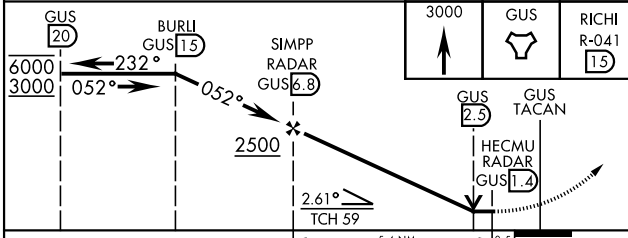
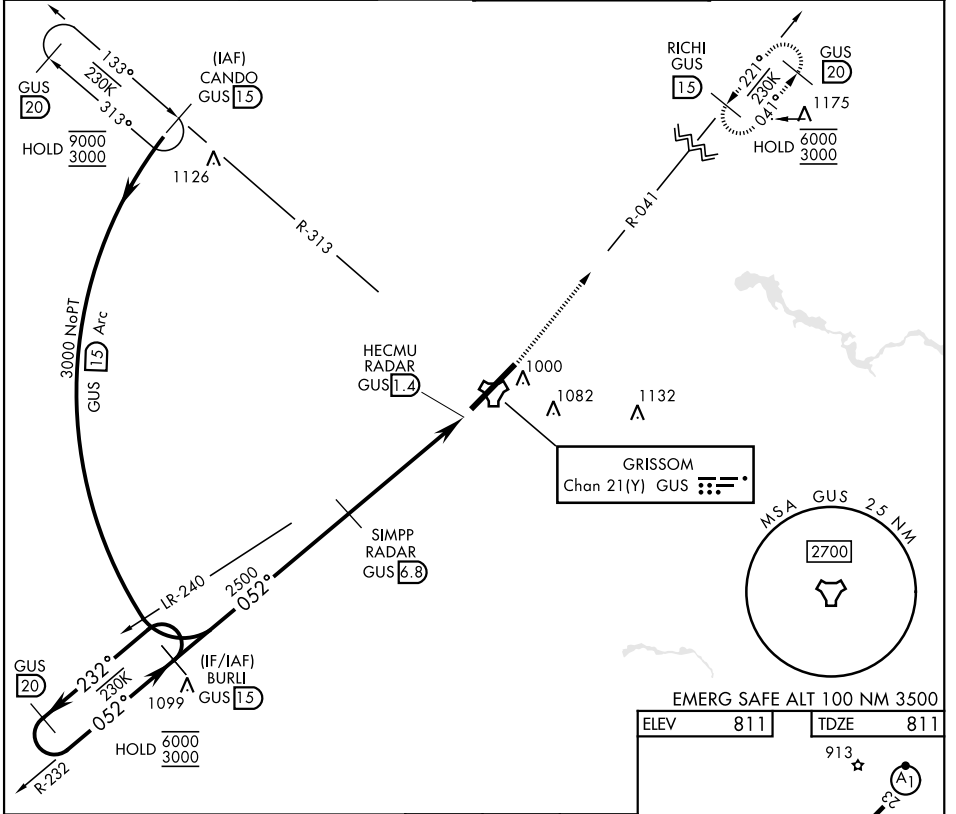
TACAN GUS Chan <b>21(Y)</b>	APCH CRS <b>052°</b>	Rwy Idg <b>12,501</b> TDZE <b>811</b> Arprt Elev <b>811</b>
-----------------------------	----------------------	---

[USAF]

GRISSOM ARB (KGUS)

RADAR, DME required		ALSF-1	MISSED APPROACH: Climb to 3000 on the GUS TACAN R-041 to RICHI and hold. Missed approach requires use of RNAV or ATC RADAR monitoring.
* When ALS inop, increase CAT AB RVR to 55 and vis to 1 mile; CAT CDE vis to 1 3/8 miles.			

ATIS <b>132.55 270.8</b>	APP CON <b>121.05 351.8</b> (E) <b>123.85 291.675</b> (W)	TOWER ★ <b>133.7 290.45</b>	GND CON <b>128.425 275.8</b>
--------------------------	--	-----------------------------	------------------------------



ELEV 811		TDZE 811	
EMERG SAFE ALT 100 NM 3500			
HIRL Rwy 5-23			
FAF to MAP 5.4 NM			
Knots	60	90	120 150 180
Min:Sec	5:24	3:36	2:42 2:10 1:48

CATEGORY	A	B	C	D	E
S-5 *	1280/24	469 (500-1/2)	1280/50	469	(500-1)
CIRCLING	1340-1	529 (600-1)	1400-1 1/2 589 (600-1 1/2)	1400-2 589 (600-2)	1440-2 1/4 629 (700-2 1/4)

PERU, INDIANA  
Amdt 9 14JUL22

40°39'N-86°09'W

GRISSOM ARB (KGUS)

# TACAN or VOR RWY 5

EC-2, 14 MAY 2026 to 11 JUN 2026

EC-2, 14 MAY 2026 to 11 JUN 2026