

# ILS or LOC/DME RWY 23R

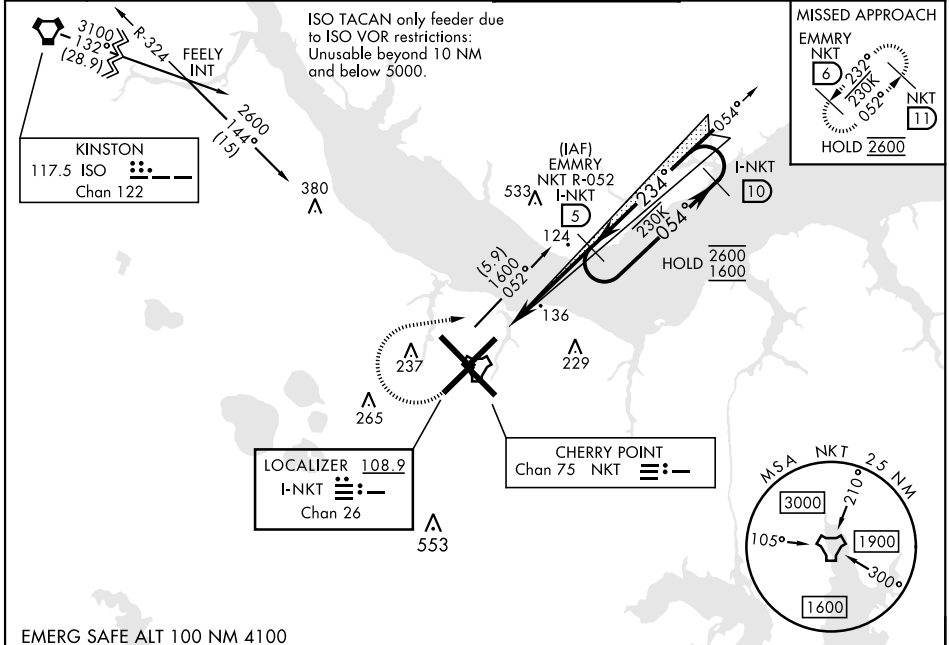
LOC/DME I-NKT <b>108.9</b> Chan <b>26</b>	APCH CRS <b>234°</b>	Rwy Idg TDZE <b>23</b> Arprt Elev <b>29</b>	<b>7552</b>
---	-------------------------	---	-------------

[USN]

CHERRY POINT MCAS (CUNNINGHAM FLD) (KNKT)

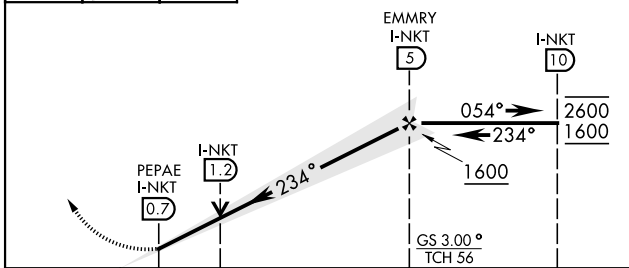
TACAN required * When ALS inop, increase vis to ¾ mile. ** When ALS inop, increase vis to 1 mile.	MALSR 	MISSED APPROACH: Climb to 500, then climbing right turn to 2600 via NKT TACAN R-052 to EMMRY and hold. Continue climb in hold to 2600.
---	-----------	--

ATIS <b>127.475</b> <b>244.875</b>	(E) <b>119.75</b> (E) <b>132.575</b> (W) <b>119.35</b>	APP CON <b>360.775</b> (abv 2600') <b>299.6</b> (at/blw 2600') <b>377.175</b> (N) <b>124.1 268.7</b>	TOWER <b>121.3 340.2</b>	GND CON <b>128.625</b> <b>239.025</b>	CLNC DEL <b>125.95</b> <b>316.125</b>	ASR/PAR
--	--	---	-----------------------------	---	---	---------



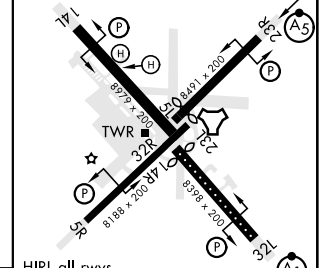
EMERG SAFE ALT 100 NM 4100

500	2600	EMMRY NKT <b>6</b>	VGSI and ILS glidepath not coincident (VGSI Angle 3.00/TCH 53).
-----	------	--------------------	---



ELEV 29	<b>D</b>	TDZE 23
---------	----------	---------

Rwy 32R, 23L, 14R, 5L marked in center mat area.



HIRL all rwys  
REIL Rwy 5L and 14R  
Rwy 5L-23R Idg 7552'  
Rwy 14R-32L Idg 7551'

	FAF to MAP 4.3 NM					
	Knots	60	90	120	150	180
	Min:Sec	4:18	2:52	2:09	1:43	1:26
CATEGORY	A	B	C	D		
S-ILS 23R*	223-½		200	(200-½)		
S-LOC 23R**	400-½	377 (400-½)	400-⅝	377 (400-⅝)		
CIRCLING	580-1	551 (600-1)	580-1½	551 (600-1½)		

# ILS or LOC/DME RWY 23R

SE-2, 14 MAY 2026 to 11 JUN 2026

SE-2, 14 MAY 2026 to 11 JUN 2026