

HI-ILS Z or LOC Z RWY 32

LOC I-LMT 109.5	APCH CRS 324°	Rwy ldg 10,300 TDZE 4095 Arprt Elev 4095
---------------------------	-------------------------	------------------------------------------------------------------------------

[USAF]

CRATER LAKE/KLAMATH RGNL (KLMT)

DME required

* When ALS inop, increase RVR to 45 vis to 7/8 mile.
 ** Circling not authorized for CAT DE NE of Rwy 14-32.



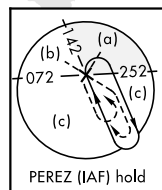
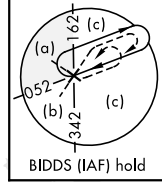
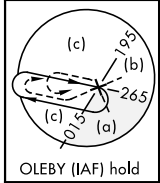
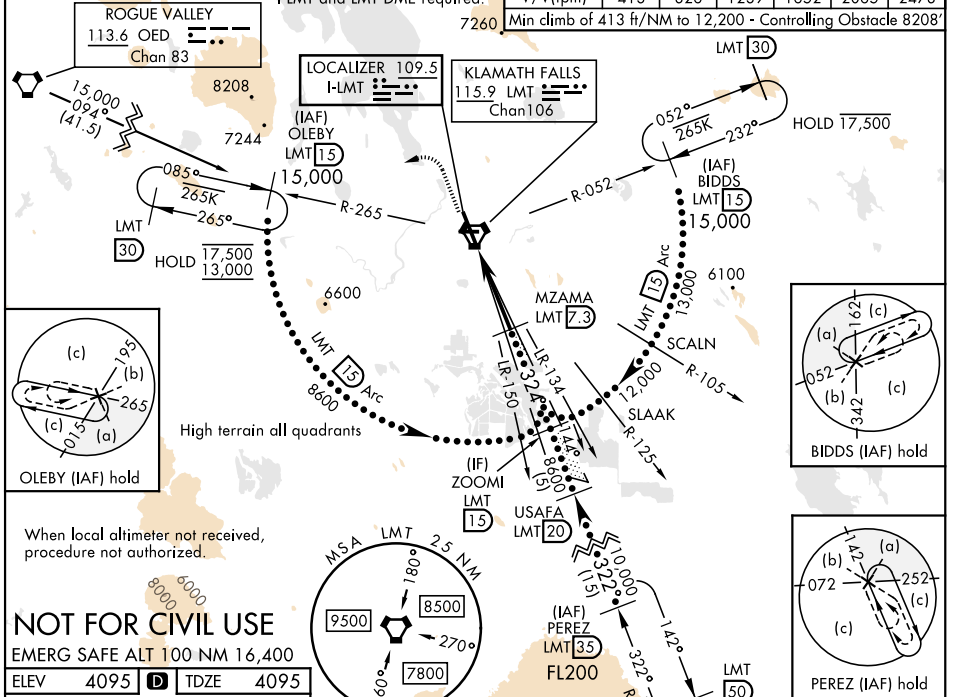
MISSED APPROACH: Climb to 6000 then climbing left turn to 13,000 on hdg 233° and on LMT VORTAC R-265 to OLEBY/LMT 15 DME and hold. Cont climb-in-hold to 13,000.

ATIS 126.5 263.0	KINGSLEY APP CON 123.675 270.8	KINGSLEY TOWER ★ 133.975 (CTAF) 0 257.8	GND CON 121.9 348.6	UNICOM 122.95
----------------------------	------------------------------------------	---------------------------------------------------	-------------------------------	-------------------------

Simultaneous reception of I-LMT and LMT DME required.

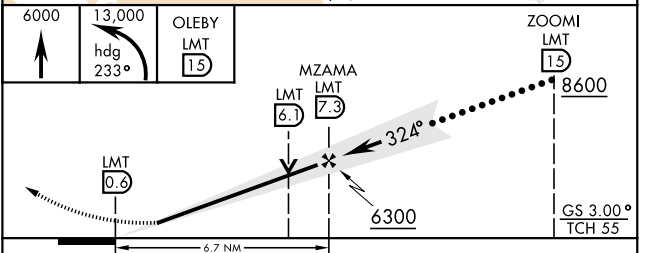
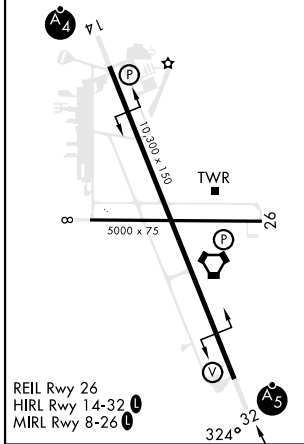
Knots	60	120	180	240	300	360
V/V(fpm)	413	826	1239	1652	2065	2478

Min climb of 413 ft/NM to 12,200 - Controlling Obstacle 8208'



When local altimeter not received, procedure not authorized.

NOT FOR CIVIL USE
 EMERG SAFE ALT 100 NM 16,400
 ELEV 4095 D TDZE 4095



CATEGORY	C	D	E
S-ILS 32*	4369/24	274	(300-1/2)
S-LOC 32	5940-3	1845	(1900-3)
CIRCLING **	5940-3	1845	(1900-3)

HI-ILS Z or LOC Z RWY 32

NW-1, 14 MAY 2026 to 11 JUN 2026

NW-1, 14 MAY 2026 to 11 JUN 2026