

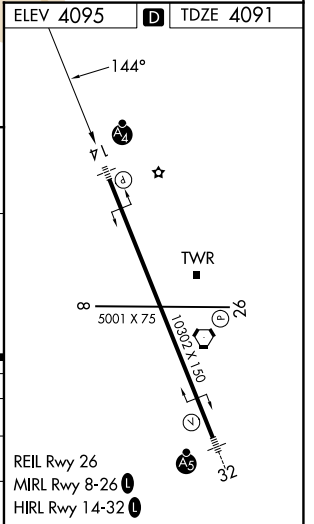
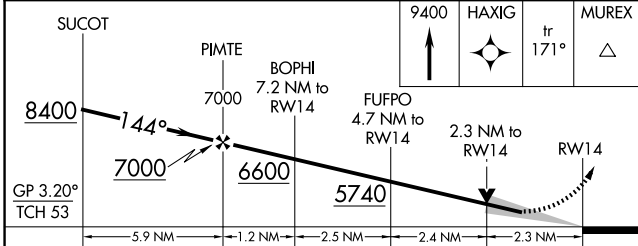
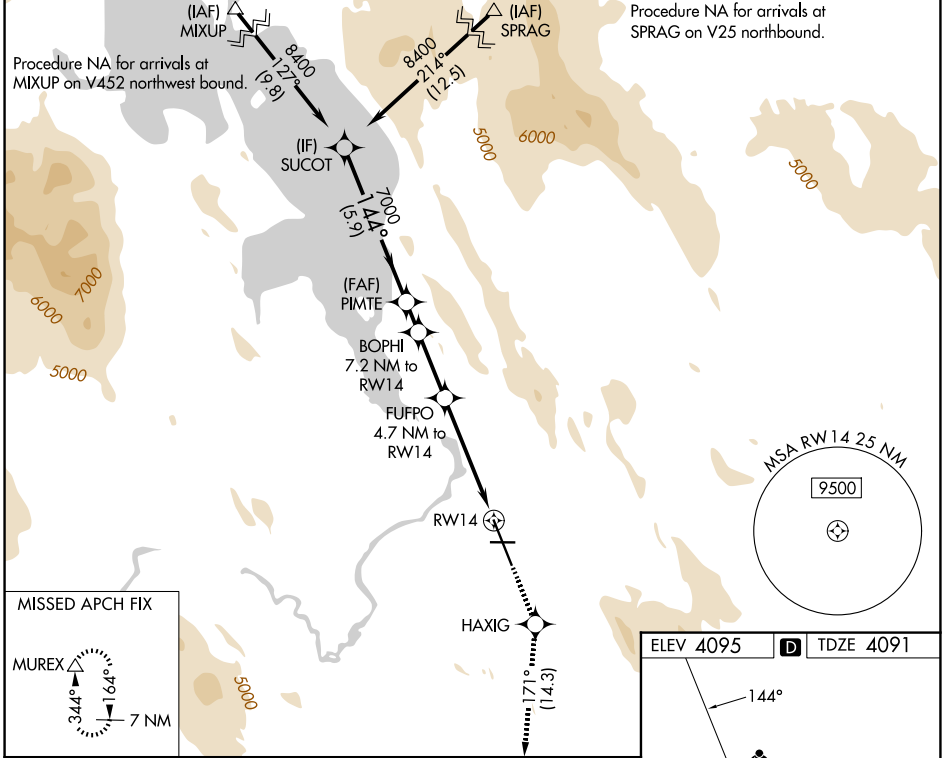
WAAS CH <b>58001</b> <b>W14A</b>	APP CRS <b>144°</b>	Rwy Ldg TDZE Apt Elev	<b>10302</b> <b>4091</b> <b>4095</b>
--	------------------------	-----------------------------	--

# RNAV (GPS) RWY 14

CRATER LAKE/KLAMATH RGNL (L.M.T)

RNP APCH - GPS.	MALSF	MISSED APPROACH: Climb to 9400 direct HAXIG and track 171° to MUREX and hold, continue climb-in-hold to 9400.
▼ For inop ALS, increase LNAV Cats C and D visibility to 2½ SM.	⚠	
⚠ Circling NA for Cat D northeast of Rwy 14-32.		

ATIS <b>126.5 263.0</b>	KINGSLEY APP CON* <b>123.675 270.8</b>	KINGSLEY TOWER* <b>133.975 (CTAF) 257.8</b>	GND CON <b>121.9 348.6</b>	UNICOM <b>122.95</b>
----------------------------	---	--	-------------------------------	-------------------------



CATEGORY	A	B	C	D
LPV DA	4650-1⅜ 559 (600-1⅜)			
LNAV MDA	4920-¾ 829 (900-¾)	4920-1 829 (900-1)	4920-2	829 (900-2)
CIRCLING	4920-1¼ 825 (900-1¼)	4980-1¼ 885 (900-1¼)	5420-3 1325 (1400-3)	5680-3 1585 (1600-3)

REIL Rwy 26  
MIRL Rwy 8-26  
HIRL Rwy 14-32

NW-1, 14 MAY 2026 to 11 JUN 2026

NW-1, 14 MAY 2026 to 11 JUN 2026