

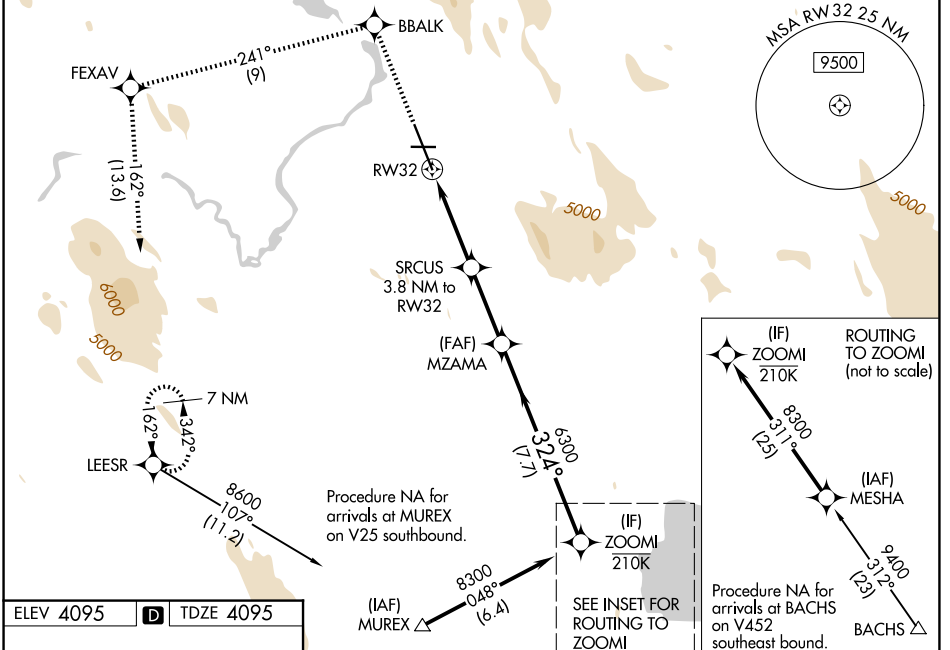
WAAS CH 70702 W32A	APP CRS 324°	Rwy Ldg 10302 TDZE 4095 Apt Elev 4095
---------------------------------	------------------------	--

RNAV (GPS) RWY 32

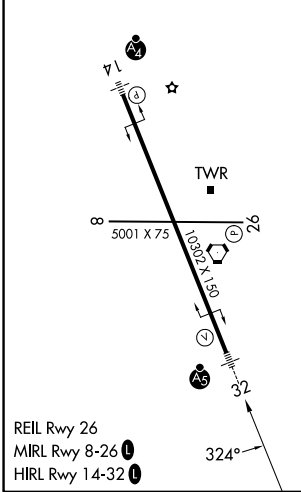
CRATER LAKE/KLAMATH RGNL (L.M.T)

RNP APCH - GPS.	MALSR AS	MISSED APPROACH: Climb to 8600 direct BBALK and on track 241° to FEXAV and on track 162° to LEESR and hold. *Missed approach requires minimum climb of 235 feet per NM to 6100.
<p>Baro-VNAV NA. Circling NA for Cat D northeast of Rwy 14-32. For inop ALS, increase LPV all Cats visibility to 1½ SM, LPV* (CG 235) all Cats visibility to RVR 4500, LNAV/VNAV all Cats visibility to 1¾ SM, and LNAV Cat C/D visibility to 2½ SM.</p>		

ATIS 126.5 263.0	KINGSLEY APP CON* 123.675 270.8	KINGSLEY TOWER* 133.975 (CTAF) 257.8	GND CON 121.9 348.6	UNICOM 122.95
----------------------------	---	--	-------------------------------	-------------------------



ELEV 4095	D	TDZE 4095
-----------	---	-----------



8600	BBALK	tr 241°	FEXAV	tr 162°	LEESR	MZAMA	ZOOMI
			2.3 NM to RW32			3.8 NM to RW32	
						6300	8300
						324°	
						5360	6300
							GP 3.00° TCH 55
						2.3 NM	1.5 NM
						3 NM	7.7 NM
CATEGORY	A	B	C	D			
LPV DA*	4387/24			292 (300-½)			
LPV DA	4644/60			549 (600-1¼)			
LNAV/VNAV DA	4705-1¾			610 (700-1¾)			
LNAV MDA	4900/24	4900/40	4900-1⅞	805 (900-1¾)			
	805 (900-½)	805 (900-¾)					
CIRCLING	4900-1	4980-1¼	5420-3	5680-3			
	805 (900-1)	885 (900-1¼)	1325 (1400-3)	1585 (1600-3)			

NW-1, 14 MAY 2026 to 11 JUN 2026

NW-1, 14 MAY 2026 to 11 JUN 2026