

LOC/DME I-PSC 108.7 Chan 24	APP CRS 211°	Rwy Ldg TDZE Apt Elev	7110 403 410
--	------------------------	-----------------------------	---

ILS or LOC RWY 21R

TRI-CITIES (PSC)

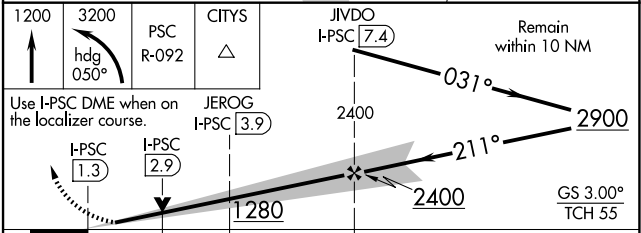
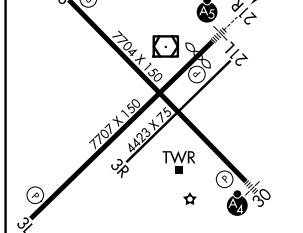
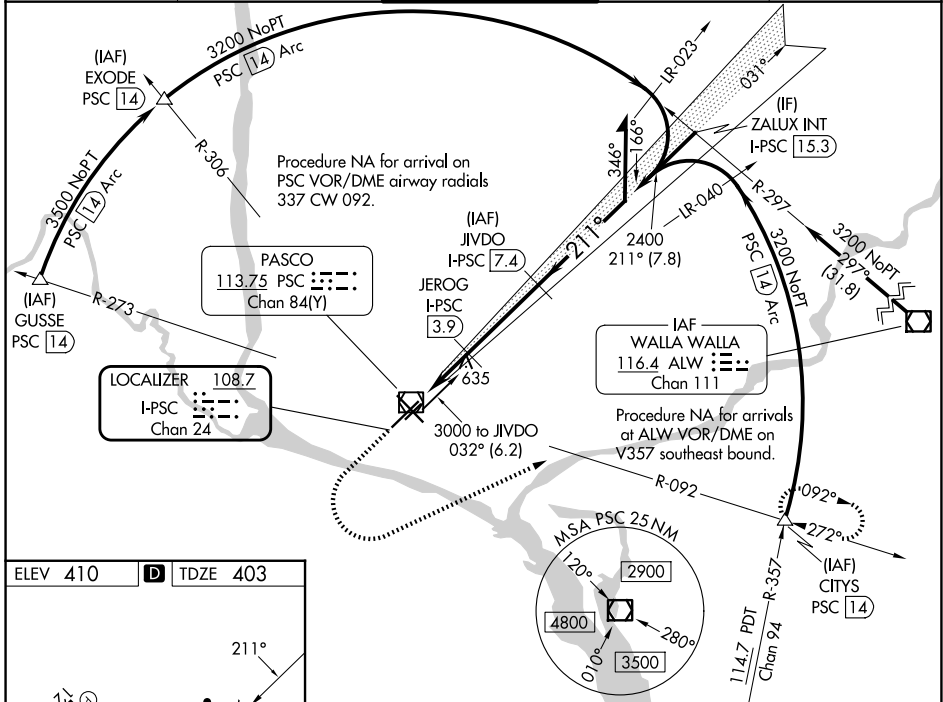
DME required for LOC only.
DME required for procedure entry at GUSSE, EXODE, CITYS, PSC VOR/DME.

▼ VDP NA when using Hermiston altimeter setting. For inop ALS when using Hermiston altimeter setting, increase S-ILS 21R all Cats visibility to RVR 4500, increase S-LOC 21R Cats C and D visibility to 1 3/4 SM. When local altimeter setting not received, use Hermiston altimeter setting: increase DA to 698 feet and all MDAs 100 feet; increase S-LOC 21R Cat C and D visibility 3/8 SM and Circling Cat C and D visibility 1/4 SM. * RVR 1800 authorized with use of FD or AP or HUD to DA (NA when using Hermiston altimeter setting).

MALSR

MISSED APPROACH:
Climb to 1200 then climbing left turn to 3200 on heading 050° and PSC VOR/DME R-092 to CITYS INT/PSC VOR/DME 14 DME and hold.

ATIS 125.65	SPOKANE APP CON * 128.75 377.2	TRI-CITIES TOWER * 135.3 (CTAF) 285.55	GND CON 121.8	UNICOM 122.95
-----------------------	--	--	-------------------------	-------------------------



ELEV 410	D	TDZE 403			
REIL Rwy 3L and 12	MIRL Rwy 12-30	HIRL Rwy 3L-21R			
1200	3200	PSC R-092	CITYS	JIVDO I-PSC 7.4	Remain within 10 NM
Use I-PSC DME when on the localizer course.	JEROG I-PSC 3.9	2400	031°	2900	
I-PSC 1.3	I-PSC 2.9	1280	211°	2400	GS 3.00° TCH 55
		1.5 NM	1.1 NM	3.5 NM	
CATEGORY	A	B	C	D	
S-ILS 21R*	603/24 200 (200-1/2)				
S-LOC 21R	940/24	537 (600-1/2)	940/55	537 (600-1)	
CIRCLING	940-1	530 (600-1)	1040-1 3/4	1100-2 1/4	630 (700-1 1/4) 690 (700-2 1/4)

NW-1, 14 MAY 2026 to 11 JUN 2026

NW-1, 14 MAY 2026 to 11 JUN 2026