

PASCO ONE DEPARTURE (OBSTACLE)

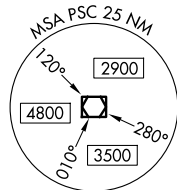
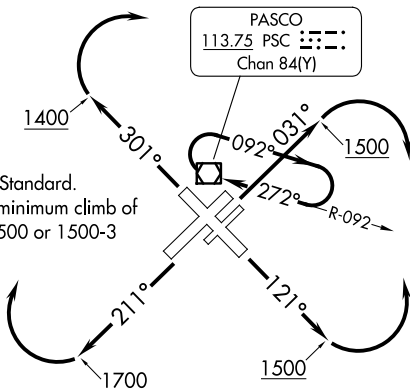
AL-474 (FAA)

TRI-CITIES (PSC)
PASCO, WASHINGTON

SPOKANE DEP CON *
128.75 377.2
ATIS
125.65
CLNC DEL
120.0
GND CON
121.8
TRI-CITIES TOWER *
135.3 (CTAF) 285.55

TAKEOFF MINIMUMS

Rwys 3L/R, 12, 21L, 30: Standard.
Rwy 21R: Standard with minimum climb of 215'/NM to 1500 or 1500-3 for VCOA.



TAKEOFF OBSTACLE NOTES

- Rwy 3L: Vegetation 96' from DER, 479' left of centerline, 405' MSL.
Vehicles on road 1785' from DER, 737' right of centerline, 447' MSL.
Towers, electrical system beginning 2450' from DER, 94' right of centerline, up to 56' AGL/482' MSL.
Tank 4658' from DER, 1502' left of centerline, 89' AGL/520' MSL.
- Rwy 3R: Vegetation 255' from DER, 258' right of centerline, 413' MSL.
Vegetation 970' from DER, 47' right of centerline, 430' MSL.
Tower 1441' from DER, 602' right of centerline, 50' AGL/471' MSL.
Towers beginning 1513' from DER, 110' right of centerline, up to 109' AGL/528' MSL.
- Rwy 12: Navaid 115' from DER, 149' left of centerline, 3' AGL/405' MSL.
Trees beginning 967' from DER, 291' right of centerline, up to 465' MSL.
Pole 1442' from DER, 588' left of centerline, 35' AGL/442' MSL.
- Rwy 30: Vehicles on road 25' from DER, 493' right of centerline, 402' MSL.
Agricultural equipment 66' from DER, 409' left of centerline, 12' AGL/399' MSL.
Pole, transmission line beginning 1350' from DER, 610' right of centerline, up to 432' MSL.
Terrain 2895' from DER, 1114' left of centerline, 472' MSL.
Terrain, vegetation beginning 2970' from DER, 1105' left of centerline, up to 479' MSL.
Terrain beginning 3201' from DER, 525' left of centerline, up to 491' MSL.
Terrain beginning 3389' from DER, 658' left of centerline, up to 500' MSL.
Trees, terrain beginning 3446' from DER, 917' left of centerline, up to 518' MSL.
Buildings, trees, terrain beginning 3696' from DER, 487' left of centerline, up to 29' AGL/521' MSL.
Buildings 4151' from DER, 1419' left of centerline, 32' AGL/524' MSL.
Building beginning 4271' from DER, 997' left of centerline, up to 31' AGL/530' MSL.
Poles, buildings beginning 4637' from DER, 985' left of centerline, up to 31' AGL/540' MSL.

NOTE: Chart not to scale.

DEPARTURE ROUTE DESCRIPTION

TAKEOFF RUNWAYS 3L/R: Climb on heading 031° to 1500 thence. . . .

TAKEOFF RUNWAY 12: Climb on heading 121° to 1500 thence. . . .

TAKEOFF RUNWAYS 21L/R: Climb on heading 211° to 1700 thence. . . .

TAKEOFF RUNWAY 30: Climb on heading 301° to 1400 thence. . . .

. . . .Runway 12 climbing left turn, all others climbing right turn. Then direct PSC VOR/DME, continue climb in PSC VOR/DME holding pattern to cross PSC VOR/DME at or above MEA for route of flight.

RUNWAY 21R: Obtain ATC approval for VCOA when requesting IFR clearance. Climb in visual conditions to cross Tri-Cities Airport at or above 1800.

PASCO ONE DEPARTURE (OBSTACLE)

PASCO, WASHINGTON
TRI-CITIES (PSC)