

RNAV (RNP) Z RWY 21R

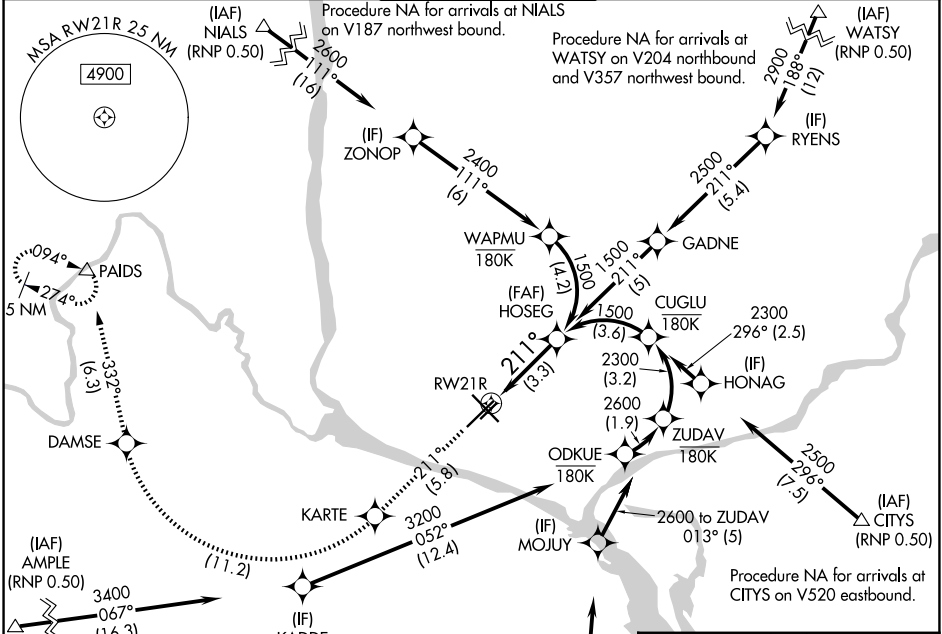
TRI-CITIES (PSC)

APP CRS	Rwy Ldg	7110
211°	TDZE	404
	Apt Elev	410

⚠ For uncompensated Baro-VNAV systems, procedure NA below -14°C (7°F) or above 54°C (130°F). GPS required. RF required. For inoperative MALSR, increase RNP 0.11 all Cats visibility to RVR 5700 and RNP 0.30 all Cats visibility to 1 3/8 mile.

MALSR  **MISSED APPROACH:** Climb to 5200 on track 211° to KARTE, right turn to DAMSE, and on track 332° to PAIDS and hold.

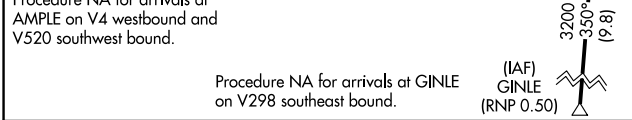
ATIS 125.65	SPOKANE APP CON * 128.75 377.2	TRI-CITIES TOWER * 135.3 (CTAF) 0 285.55	GND CON 121.8	UNICOM 122.95
-----------------------	--	--	-------------------------	-------------------------



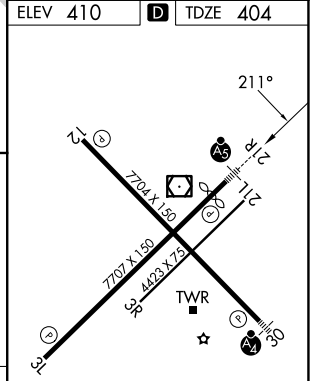
NW-1, 14 MAY 2026 to 11 JUN 2026

NW-1, 14 MAY 2026 to 11 JUN 2026

ELEV 410	D TDZE 404
----------	-------------------



5200	KARTE	DAMSE	tr 332°	PAIDS	HOSEG
tr 211°					
RWY 21R					
3.3 NM					
211°					
1500					
GP 3.00° TCH 55					



CATEGORY	A	B	C	D
RNP 0.11 DA		754/33	350 (400-5/8)	
RNP 0.30 DA		832/48	428 (500-1)	

AUTHORIZATION REQUIRED

REIL Rwy 3L and 12 **Ⓛ**
 MIRL Rwy 12-30 **Ⓛ**
 HIRL Rwy 3L-21R **Ⓛ**