

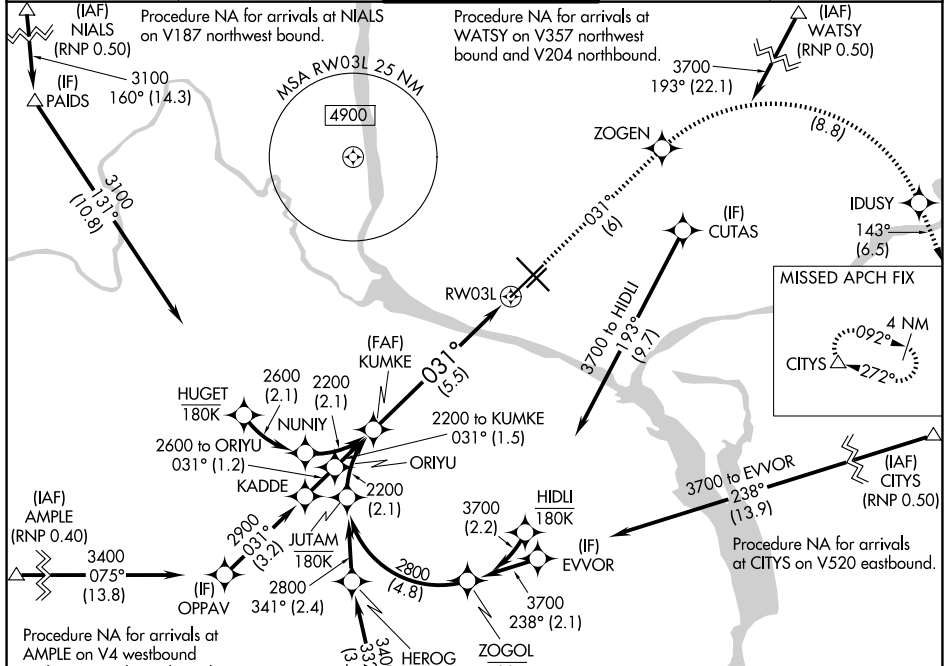
RNAV (RNP) Z RWY 3L TRI-CITIES (PSC)

APP CRS 031°	Rwy Ldg TDZE Apt Elev	7707 410 410
------------------------	-----------------------------	---

RNP AR APCH. RF required.
 ▼ For uncompensated Baro-VNAV systems, procedure NA below -14°C or above 54°C.

MISSED APPROACH: Climb to 3200 on track 031° to ZOGEN, right turn to IDUSY, and on track 143° to CITYS and hold.

ATIS 125.65	SPOKANE APP CON * 128.75 377.2	TRI-CITIES TOWER * 135.3 (CTAF) 285.55	GND CON 121.8	UNICOM 122.95
-----------------------	--	--	-------------------------	-------------------------



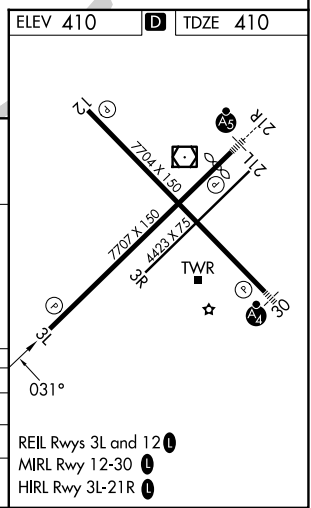
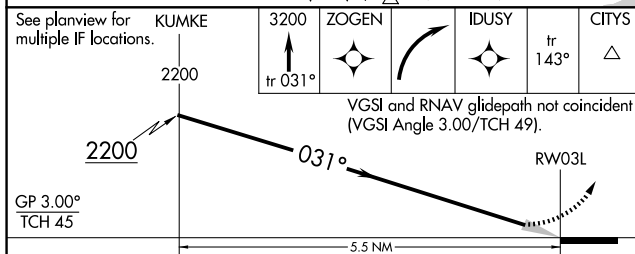
NW-1, 14 MAY 2026 to 11 JUN 2026

NW-1, 14 MAY 2026 to 11 JUN 2026

See planview for multiple IF locations.

GP 3.00° TCH 45

VGSI and RNAV glidepath not coincident (VGSI Angle 3.00/TCH 49).



AUTHORIZATION REQUIRED