

WAAS CH 58006 W12A	APP CRS 121°	Rwy Ldg TDZE Apt Elev	7704 401 410
--	------------------------	-----------------------------	---

RNAV (GPS) Y RWY 12

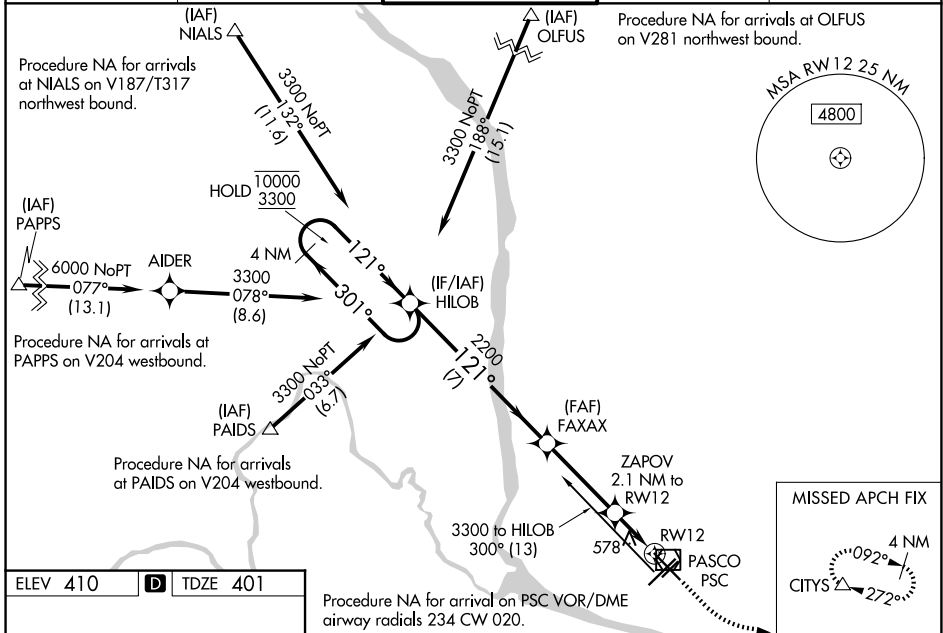
TRI-CITIES (PSC)

RNP APCH - GPS.

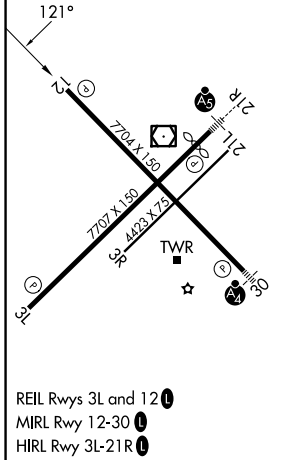
⚠ For uncompensated Baro-VNAV systems, LNAV/VNAV NA below -14°C or above 54°C. Rwy 12 helicopter visibility reduction below 3/4 SM NA. Baro-VNAV and VDP NA when using HRI altimeter setting. When local altimeter setting not received, use HRI altimeter setting: increase LPV DA to 696 feet and all visibilities 1/8 SM, and increase LNAV/VNAV DA to 935 feet and all visibilities 1/4 SM. Increase all MDAs 100 feet and LNAV and Circling Cats C and D visibility 1/4 SM.

MISSED APPROACH: Climb to 900 then climbing left turn to 3200 direct CITYS and hold.

ATIS 125.65	SPOKANE APP CON * 128.75 377.2	TRI-CITIES TOWER * 135.3 (CTAF) 285.55	GND CON 121.8	UNICOM 122.95
-----------------------	--	--	-------------------------	-------------------------



ELEV 410	D	TDZE 401
----------	----------	----------



	HILOB	FAXAX	ZAPOV	CITYS
	4 NM Holding Pattern	2200	2.1 NM to RW12	900 3200 CITYS
10000 3300	← 301°	121° →	121°	↑
GP 3.00° TCH 53		2200	1.2 NM to RW12	↻
	7 NM	3.5 NM	0.8 NM	△
CATEGORY	A	B	C	D
LPV DA		601-3/4	200 (200-3/4)	
LNAV/VNAV DA		840-1 1/4	439 (500-1 1/4)	
LNAV MDA	840-1	439 (500-1)	840-1 1/4	439 (500-1 1/4)
CIRCLING	900-1 490 (500-1)	940-1 530 (600-1)	1040-1 3/4 630 (700-1 3/4)	1100-2 1/4 690 (700-2 1/4)

NW-1, 14 MAY 2026 to 11 JUN 2026

NW-1, 14 MAY 2026 to 11 JUN 2026