

WAAS CH <b>53710</b> <b>W03A</b>	APP CRS <b>027°</b>	Rwy Ldg TDZE Apt Elev	<b>9201</b> <b>6643</b> <b>6689</b>
--	------------------------	-----------------------------	---

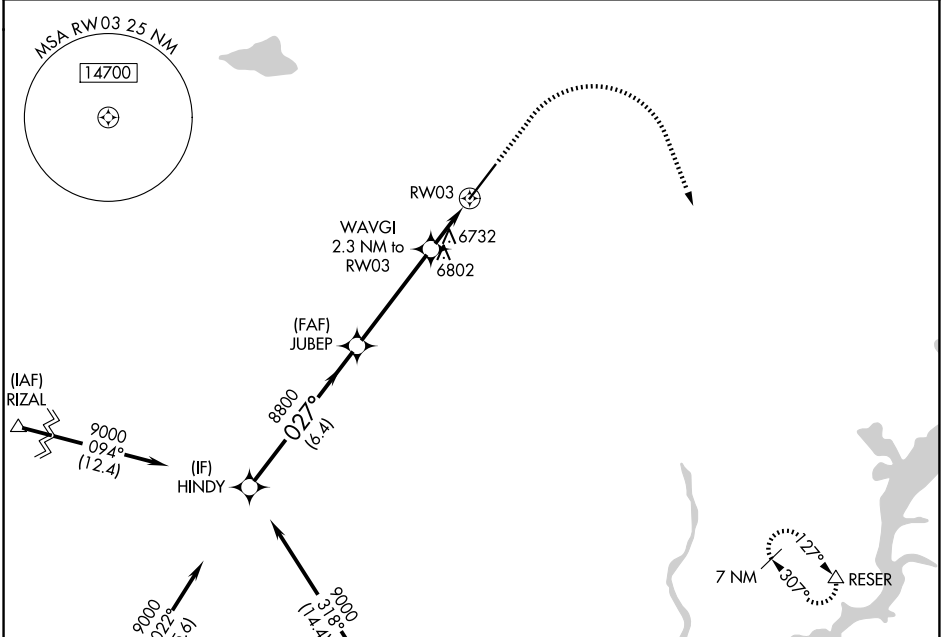
# RNAV (GPS) RWY 3

DURANGO-LA PLATA COUNTY (D.R.O)

**⚠** For uncompensated Baro-VNAV systems, LNAV/VNAV NA below -26°C (-14°F) or above 44°C (111°F). DME/DME RNP-0.3 NA. For inop MALSR, increase LNAV Cat C/D visibility to 1 mile.

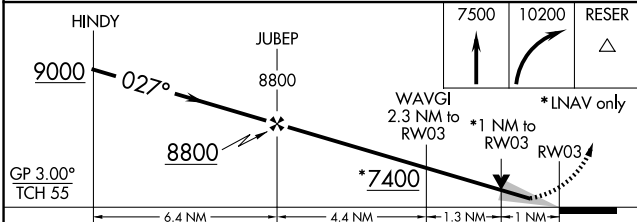
**MALSR** MISSED APPROACH: Climb to 7500 then climbing right turn to 10200 direct RESER and hold.

ASOS <b>120.625</b>	DENVER CENTER <b>118.575 348.7</b>	UNICOM <b>122.8</b> (CTAF) <b>📻</b>
------------------------	---------------------------------------	--

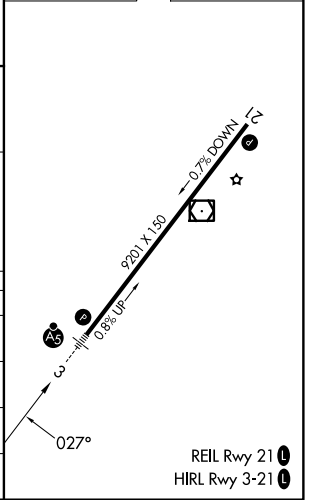


**(IAF) RATTLESLAKE RSK** 9000 027° (15.6)  
**(IF) HINDY** 9000 027° (12.4)  
**(FAF) JUBEP** 8800 027° (6.4)  
**(IAF) TURLY** 9000 027° (17.4)  
 Procedure NA for arrivals on RSK VORTAC airway radials 316 CW 057.

ELEV 6689	<b>D</b>	TDZE 6643
-----------	----------	-----------



CATEGORY	A	B	C	D
LPV DA		6843-½	200 (200-½)	
LNAV/VNAV DA		6918-½	275 (300-½)	
LNAV MDA	7000-½	357 (400-½)	7000-⅝	357 (400-⅝)
CIRCLING	7160-1 471 (500-1)	7220-1 531 (600-1)	7540-2½ 851 (900-2½)	8140-3 1451 (1500-3)



SW-1, 14 MAY 2026 to 11 JUN 2026

SW-1, 14 MAY 2026 to 11 JUN 2026