

| | | | |
|---|------------------------|-----------------------------|---|
| LOC/DME I-ALI 109.3 Chan 30 | APP CRS 308° | Rwy Idg TDZE Apt Elev | 5997 174 178 |
|---|------------------------|-----------------------------|---|

LOC/DME RWY 31

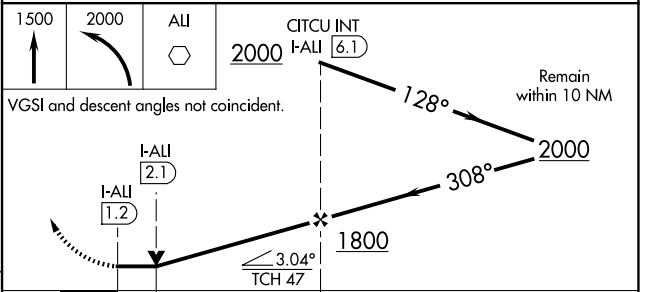
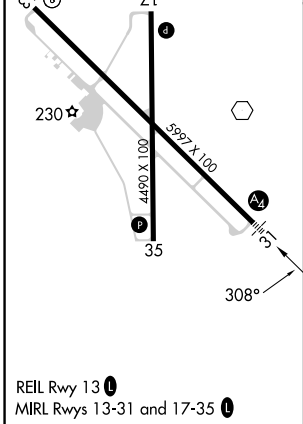
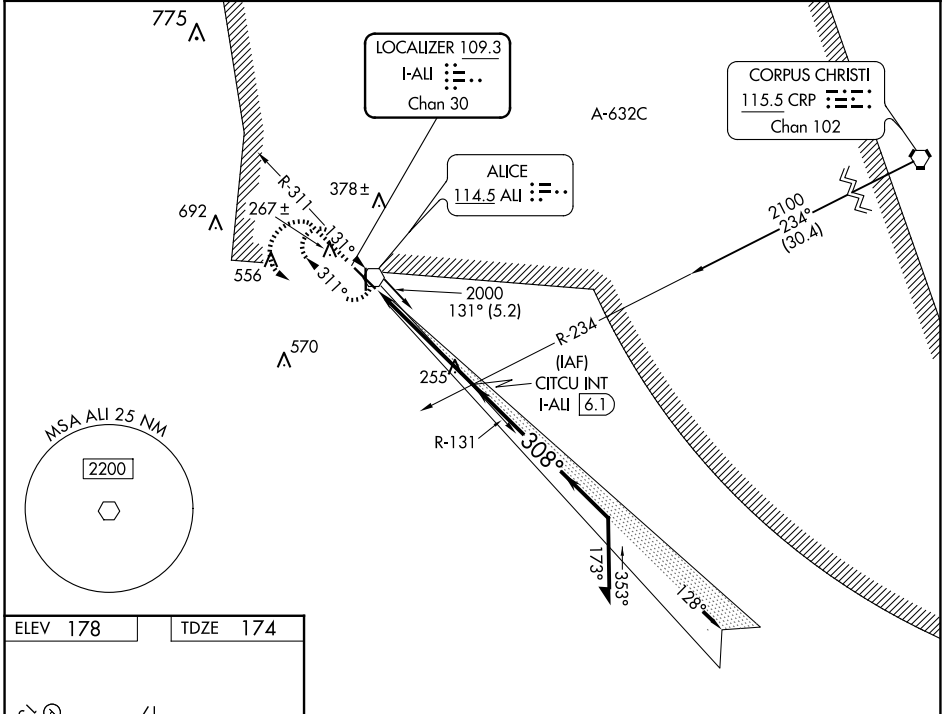
ALICE INTL (ALI)

RADAR required for procedure entry from Corpus Christi CRP VORTAC.

▼ VDP NA when using Nueces County altimeter setting. When local altimeter setting not received, use Nueces County altimeter setting and increase all MDAs 60 feet and S-LOC 31 visibility Cat C/D ¼ SM, and Circling visibility Cat D ¼ SM. For inop ALS when using Nueces County altimeter setting, increase S-31 Cats C, D visibility to 1½ SM.

MALS MISSED APPROACH: Climb to 1500 then climbing left turn to 2000 on direct ALI VOR and hold.

| | | |
|------------------------|---|-------------------------------|
| ASOS 119.225 | KINGSVILLE APP CON * 119.9 290.45 | UNICOM 123.0 (CTAF) |
|------------------------|---|-------------------------------|



| CATEGORY | A | B | C | D |
|----------|----------------------|----------------------|------------------------|------------------------|
| S-31 | | 520-¾ | 346 (400-¾) | |
| CIRCLING | 600-1 422 (500-1) | 640-1 462 (500-1) | 700-1½ 522 (600-1½) | 900-2¼ 722 (800-2¼) |