

VOR ALI 114.5	APP CRS 325°	Rwy Idg 5997
		TDZE 174
		Apt Elev 178

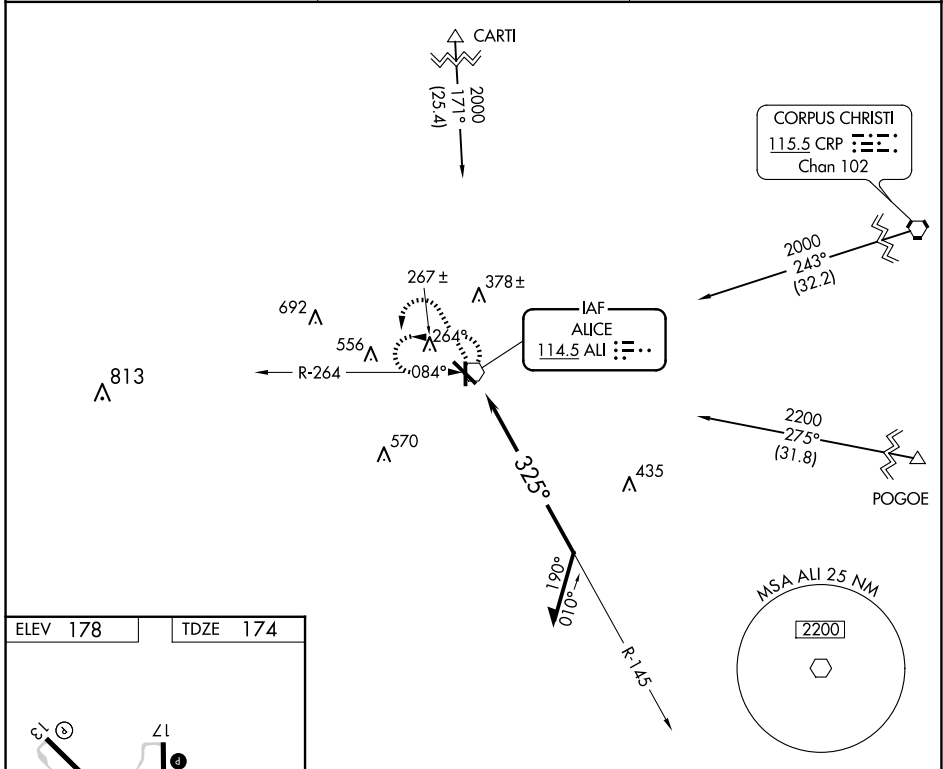
VOR RWY 31

ALICE INTL (ALI)

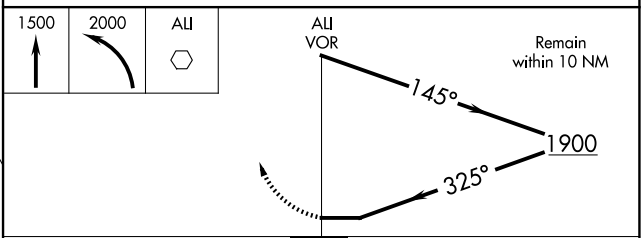
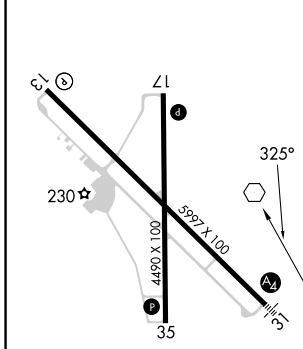
▽ When local altimeter setting not received, use Nueces County altimeter setting; increase all MDA 60 feet and visibility S-31 Cats C and D and Circling Cat D ¼ SM. For inop ALS, increase S-31 Cats C and D visibility to 1½ SM. For inop ALS when using Nueces County altimeter setting, increase S-31 Cats C and D visibility to 1½ SM.

MALS
MISSED APPROACH: Climb to 1500 then climbing left turn to 2000 direct ALI VOR and hold.

ASOS 119.225	KINGSVILLE APP CON ★ 119.9 290.45	UNICOM 123.0 (CTAF) ①
------------------------	---	---------------------------------



ELEV 178	TDZE 174
----------	----------



CATEGORY	A	B	C	D
S-31	620-¾	446 (500-¾)	620-1	446 (500-1)
CIRCLING	620-1 442 (500-1)	640-1 462 (500-1)	700-1½ 522 (600-1½)	900-2¼ 722 (800-2¼)

REIL Rwy 13 ①
MIRL Rwys 13-31 and 17-35 ①

SC-3, 14 MAY 2026 to 11 JUN 2026

SC-3, 14 MAY 2026 to 11 JUN 2026