

ALTUS, OKLAHOMA

ILS or RNAV (GPS) Y RWY 36L

LOC I-LTS 110.3	APCH CRS 355°	Rwy Idg 13,440	TDZE 1354
		Arpt Elev 1382	

(USAF)

ALTUS AFB (KLTS)

RNAV1-GPS for ILS. RNP APCH-GPS for LNAV

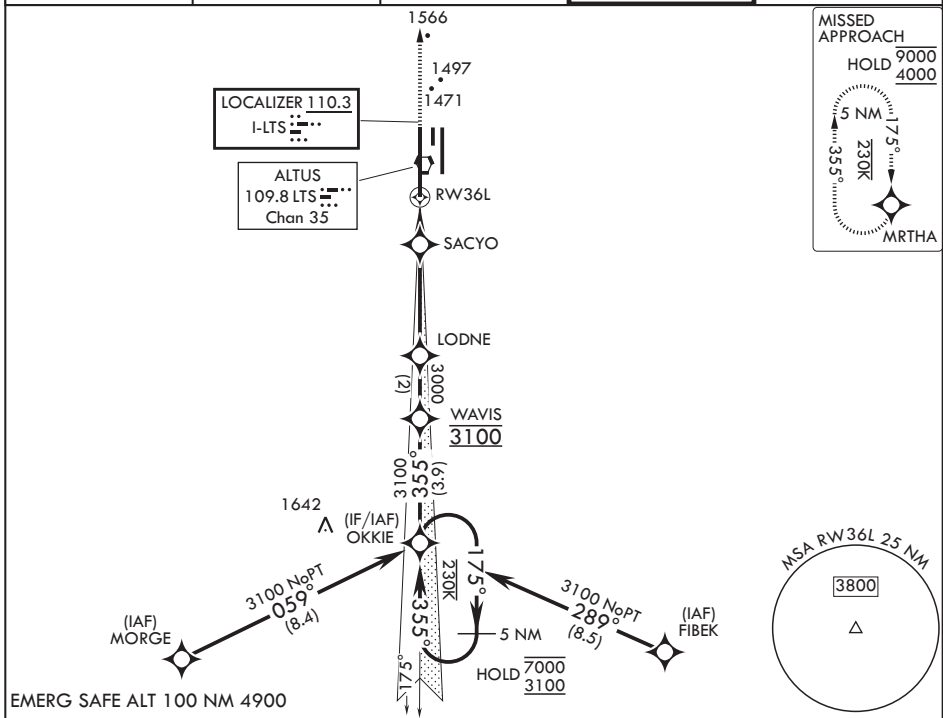
ALSIF-1

MISSED APPROACH: Climb to 4000 direct MRTHA and hold.

- * When ALS inop, increase CAT ABCDE RVR to 40, vis to 3/4 mile; RVR 18 authorized with use of FD or AP or HUD to DA.
- ** When ALS inop, increase CAT AB RVR to 55, vis to 1 mile; CAT CDE RVR to 60, vis to 1 1/8 miles.
- *** Circling NA W of Rwy 18R-36L.



ATIS* 109.8 273.5	FORT WORTH CENTER 133.5 350.35	APP CON 125.1 353.7	TOWER* 119.65 254.4	GND CON 121.85 275.8
-----------------------------	--	-------------------------------	-------------------------------	--------------------------------



EMERG SAFE ALT 100 NM 4900

5 NM Holding Pattern OKKIE	4000 MRTHA	ELEV 1382	TDZE 1354		
CATEGORY	A	B	C	D	E
S-ILS 36L*	1554/24		200	(200-½)	
LNAV MDA**	1740/24	386 (400-½)	1740/35	386	(400-¾)
CIRCLING***	1780-1 398 (400-1)	1840-1 458 (500-1)	1880-1½ 498 (500-1½)	2080-2¼ 698 (700-2¼)	2300-3 918 (1000-3)
ALTUS, OKLAHOMA		34°40'N - 99°16'W			ALTUS AFB (KLTS)

Amtd 3 14MAY26

ILS or RNAV (GPS) Y RWY 36L

SC-1, 14 MAY 2026 to 11 JUN 2026

SC-1, 14 MAY 2026 to 11 JUN 2026