

ALTUS, OKLAHOMA

ILS Z or LOC RWY 18R

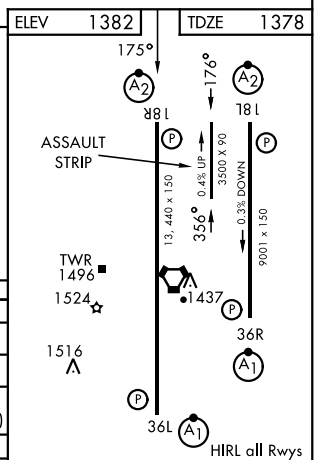
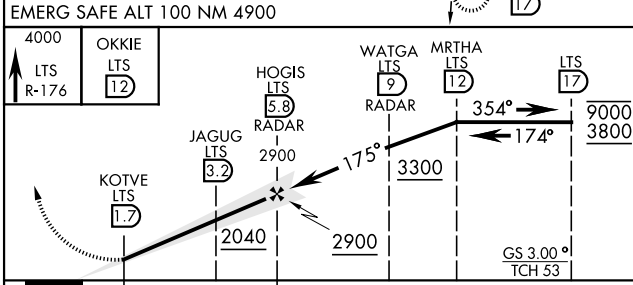
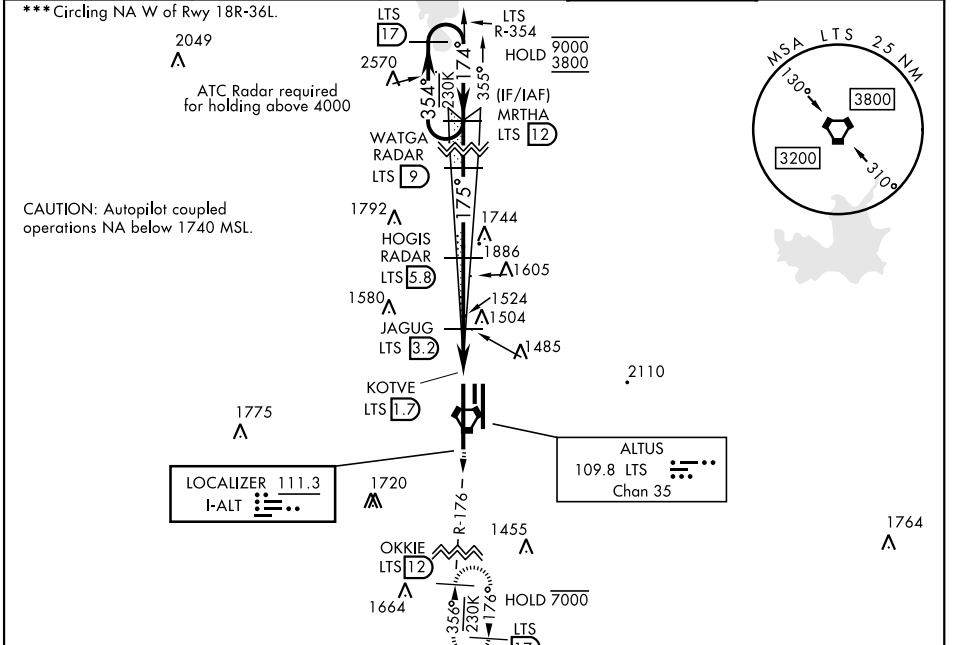
LOC I-ALT 111.3	APCH CRS 175°	Rwy Idg 13,440 TDZE 1378 Arpt Elev 1382
---------------------------	-------------------------	--

[USAF]

ALTUS AFB (KLTS)

DME or RADAR required.	SALSF 	MISSED APPROACH: Climb to 4000, intercept LTS VORTAC R-176 to OKKIE and hold.
<p>▼ *When ALS inop, increase RVR to 55 and vis to 1 mile.</p> <p>**When ALS inop, increase CAT AB RVR to 55, vis to 1 mile; CAT CDE vis to 1/8 miles.</p>		

ATIS ★ 109.8 273.5	FORT WORTH CENTER 133.5 350.35	APP CON 125.1 353.7	TOWER ★ 119.65 254.4	GND CON 121.85 275.8
------------------------------	--	-------------------------------	--------------------------------	--------------------------------



CATEGORY	A	B	C	D	E
S-ILS 18R	1578/40		200	(200-3/4)	
S-LOC 18R*	1760/40	382 (400-3/4)	1760/45	382	(400-7/8)
CIRCLING***	1780-1 398 (400-1)	1840-1 458 (500-1)	1880-1 1/2 498 (500-1 1/2)	2080-2 1/4 698 (700-2 1/4)	2180-2 3/4 798 (800-2 3/4)
LOCAL ALTIMETER, WITHOUT LAST STEPDOWN FIX					
S-LOC 18R**	2040/40	662 (700-3/4)	2040-1 3/4	662	(500-1 3/4)
CIRCLING***	2040-1	658 (700-1)	2040-1 7/8 658 (700-1 7/8)	2080-2 1/4 698 (700-2 1/4)	2180-2 3/4 798 (800-2 3/4)

FAF to MAP 4.1 NM					
Knots	60	90	120	150	180
Min:Sec	4:06	2:44	2:03	1:38	1:22

ALTUS, OKLAHOMA
Amdt 2 14JUL22

34° 40' N-99° 16' W

ALTUS AFB (KLTS)

ILS Z or LOC RWY 18R

SC-1, 14 MAY 2026 to 11 JUN 2026

SC-1, 14 MAY 2026 to 11 JUN 2026