

ALTUS, OKLAHOMA

# ILS Z or LOC RWY 36L

LOC I-LTS <b>110.3</b>	APCH CRS <b>355°</b>	Rwy Idg <b>13,440</b> TDZE <b>1354</b> Arpt Elev <b>1382</b>
---------------------------	-------------------------	---

[USAF]

ALTUS AFB (KLTS)

DME or RADAR required.



MISSED APPROACH: Climb to 4000, intercept LTS VORTAC R-354 to MRTHA and hold.

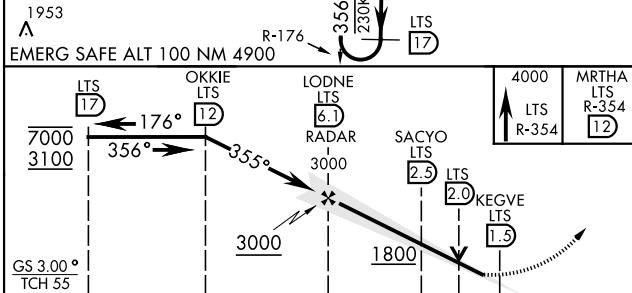
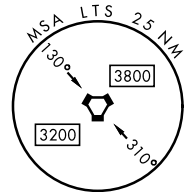
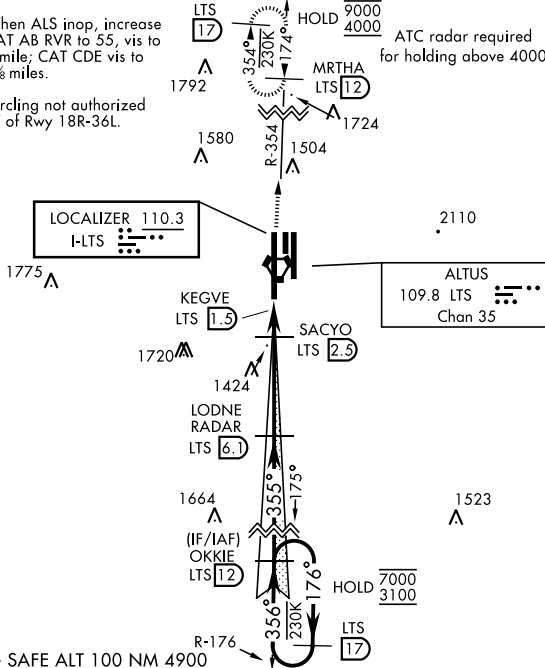
- \* When ALS inop, increase RVR to 40 and vis to 3/4 mile; RVR 18 authorized with use of FD or AP or HUD to DA.
- \*\* When ALS inop, increase RVR to 55 and vis to 1 mile.

ATIS ★ <b>109.8 273.5</b>	FORT WORTH CENTER <b>133.5 350.35</b>	APP CON <b>125.1 353.7</b>	TOWER ★ <b>119.65 254.4</b>	GND CON <b>121.85 275.8</b>
------------------------------	--	-------------------------------	--------------------------------	--------------------------------

\*\*\* When ALS inop, increase CAT AB RVR to 55, vis to 1 mile; CAT CDE vis to 1 3/8 miles.

\*\*\*\* Circling not authorized W of Rwy 18R-36L.

ATC radar required for holding above 4000



ELEV 1382	TDZE 1354
ASSAULT STRIP	181 (A2)
TWR 1496	181 (A2)
1524	181 (A2)
1516 (A)	181 (A2)
36L	181 (A2)
36R	181 (A2)
HIRL all Rwys	181 (A2)
FAF to MAP 4.6 NM	181 (A2)
Knots	60 90 120 150 180
Min:Sec	4:36 3:04 2:18 1:50 1:32

CATEGORY	A	B	C	D	E
S-ILS 36L*		1554/24	200	(200-1/2)	
S-LOC 36L**	1680/24	326 (300-1/2)	1680/26	326	(300-1/2)
CIRCLING****	1780-1 398 (400-1)	1840-1 458 (500-1)	1880-1 1/2 498 (500-1 1/2)	2080-2 1/4 698 (700-2 1/4)	2180-2 3/4 798 (800-2 3/4)
WITHOUT LAST STEPDOWN FIX					
S-LOC 36L***	1800/24	446 (500-1/2)	1800/45	446	(500-3/4)
CIRCLING****	1800-1 418 (500-1)	1840-1 458 (500-1)	1880-1 1/2 498 (500-1 1/2)	2080-2 1/4 698 (700-2 1/4)	2180-2 3/4 798 (800-2 3/4)

ALTUS, OKLAHOMA  
Amdt 3 14JUL22

34°40'N-99°16'W

ALTUS AFB (KLTS)

# ILS Z or LOC RWY 36L

SC-1, 14 MAY 2026 to 11 JUN 2026

SC-1, 14 MAY 2026 to 11 JUN 2026