

# OKKIE THREE DEPARTURE (RNAV) (OKKIE3•OKKIE)

ALTUS, OKLAHOMA

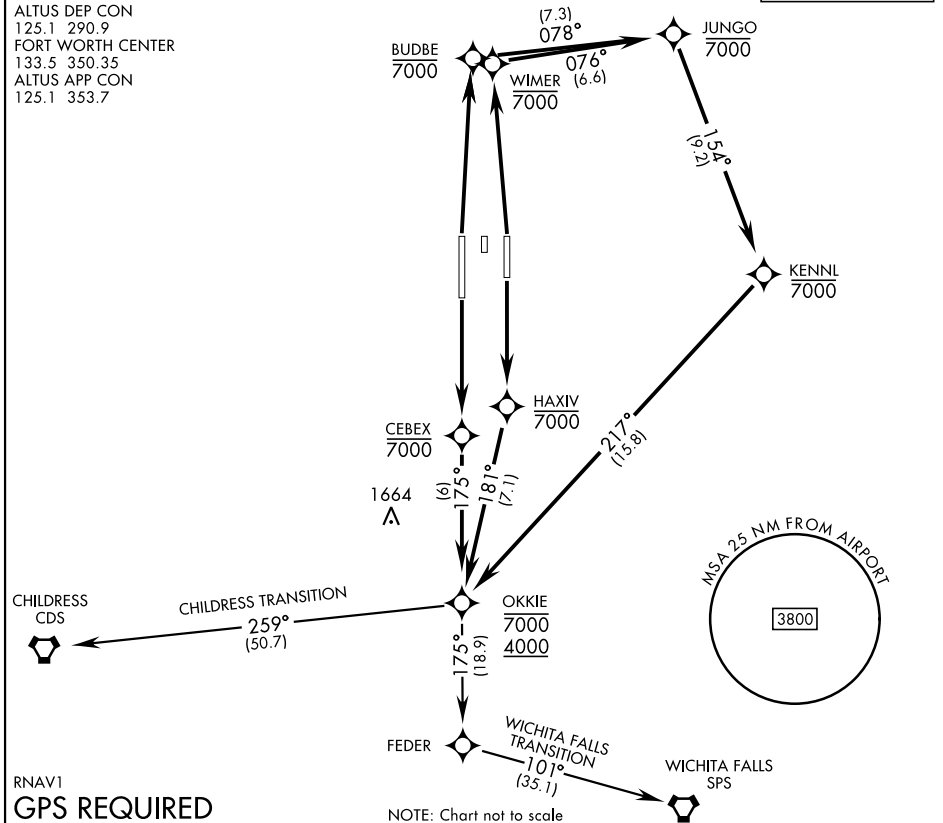
ATIS ★ 109.8 273.5  
 CLNC DEL  
 120.65 284.7  
 GND CON  
 121.85 275.8  
 ALTUS TOWER ★  
 119.65 254.4  
 ALTUS DEP CON  
 125.1 290.9  
 FORT WORTH CENTER  
 133.5 350.35  
 ALTUS APP CON  
 125.1 353.7

AL-482 [USAF]

Rwy	Knots	60	120	180	240	300	360
36L/R	V/V(fpm)	300	600	900	1200	1500	1800

Minimum Climb to 1900

**TOP ALTITUDE:**  
**9000**



RNAV1  
**GPS REQUIRED**

NOTE: Chart not to scale

## DEPARTURE ROUTE DESCRIPTION

**TAKEOFF RWY 18L:** Climb direct HAXIV, then on track 181° to OKKIE. Cross OKKIE between 4000 and 7000, thence...

**TAKEOFF RWY 18R:** Climb direct CEBEX, then on track 175° to OKKIE. Cross OKKIE between 4000 and 7000, thence...

**TAKEOFF RWY 36L:** Climb direct BUDBE, then on depicted route to OKKIE. Cross OKKIE between 4000 and 7000, thence...

**TAKEOFF RWY 36R:** Climb direct WIMER, then on depicted route to OKKIE. Cross OKKIE between 4000 and 7000, thence...

...via transition or assigned route. Maintain 9000. Expect filed altitude 10 minutes after departure.

**CHILDRESS TRANSITION (OKKIE3-CDS):** From over OKKIE track 259° to CDS.

**WICHITA FALLS TRANSITION (OKKIE3-SPS):** From over OKKIE track 175° to FEDER, then track 101° to SPS.

# OKKIE THREE DEPARTURE (RNAV) (OKKIE3•OKKIE)

Orig 07OCT21

ALTUS, OKLAHOMA

ALTUS AFB (KLTS)

SC-1, 14 MAY 2026 to 11 JUN 2026

SC-1, 14 MAY 2026 to 11 JUN 2026