

ROCKN THREE DEPARTURE (RNAV) (ROCKN3•ROCKN)

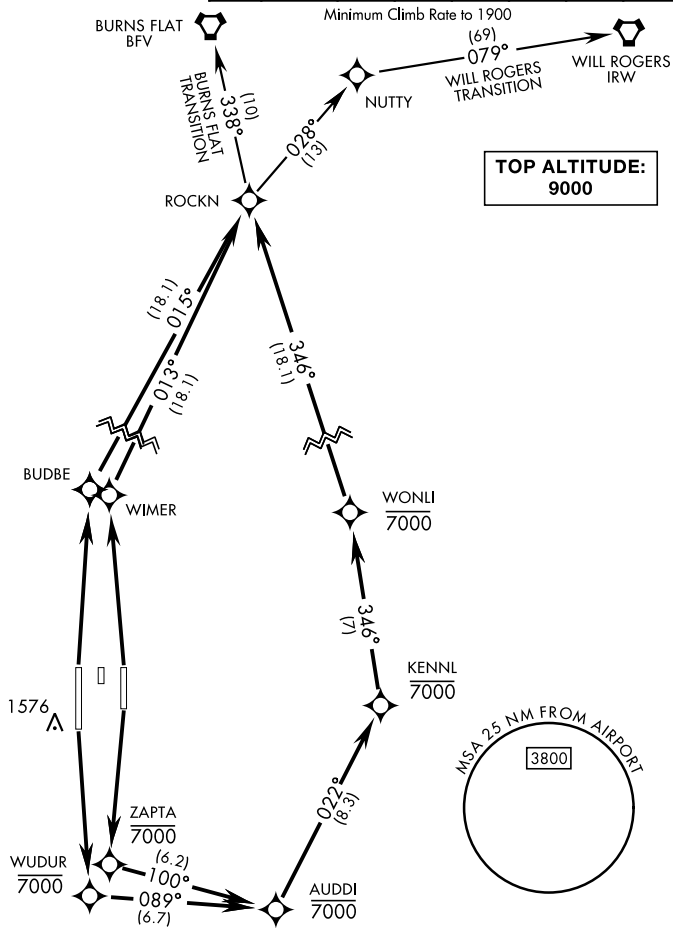
ALTUS AFB (KLTS)

ALTUS, OKLAHOMA

ATIS ★ 109.8 273.5
 CLNC DEL
 120.65 284.7
 GND CON
 121.85 275.8
 ALTUS TOWER ★
 119.65 254.4
 ALTUS DEP CON
 125.1 290.9
 FORT WORTH CENTER
 133.5 350.35
 ALTUS APP CON
 125.1 353.7

AL-482 [USAF]

Rwy	Knots	60	120	180	240	300	360
18L	V/V(fpm)	300	600	900	1200	1500	1800
18R	V/V(fpm)	360	720	1080	1440	1800	2160



RNAV1

GPS REQUIRED

DEPARTURE ROUTE DESCRIPTION

TAKEOFF RWY 18L: Climb direct ZAPTA, then on depicted route to ROCKN. Cross WONLI at or below 7000, thence...

TAKEOFF RWY 18R: Climb direct WUDUR, then on depicted route to ROCKN. Cross WONLI at or below 7000, thence...

TAKEOFF RWY 36L: Climb direct BUDBE, then track 015° to ROCKN, thence...

TAKEOFF RWY 36R: Climb direct WIMER, then track 013° to ROCKN, thence...

...via transition or assigned route. Maintain 9000. Expect filed altitude 10 minutes after departure.

BURNS FLAT TRANSITION (ROCKN3•BFV): From over ROCKN track 338° to BFV VORTAC.

WILL ROGERS TRANSITION (ROCKN3•IRW): From over ROCKN track 028° to NUTTY, then track 079° to IRW VORTAC.

ROCKN THREE DEPARTURE (RNAV) (ROCKN3•ROCKN)

Orig 07OCT21

ALTUS, OKLAHOMA

ALTUS AFB (KLTS)