

ALTUS, OKLAHOMA

# RNAV (RNP) X RWY 18R

APCH CRS	Rwy Idg	13,440
175°	TDZE	1378
	Arprt Elev	1382

(USAF)

ALTUS AFB (KLTS)

RNP AR APCH - RF

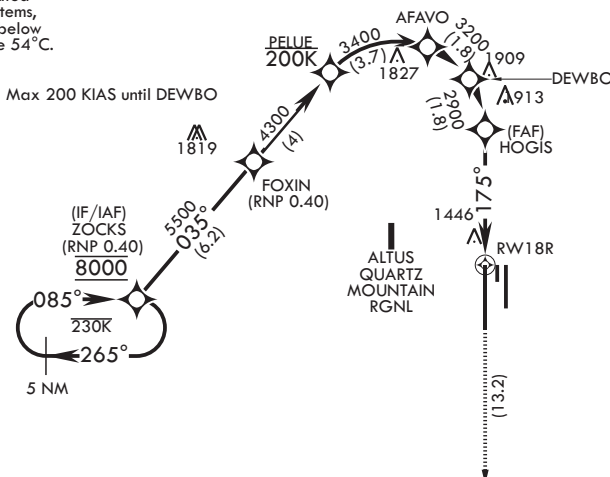


MISSED APPROACH: Climb to 4000 on track 175° to OKKIE and hold.

▼ \* When ALS inop, increase RVR to 45, vis to 7/8 mile.  
 \*\* When ALS inop, increase RVR to 60, vis to 1 1/8 miles.

ATIS* 109.8 273.5	APP CON 125.1 353.7	TOWER* 119.65 254.4	GND CON 121.85 275.8
----------------------	------------------------	------------------------	-------------------------

For uncompensated Baro-VNAV systems, procedure NA below -17°C or above 54°C.

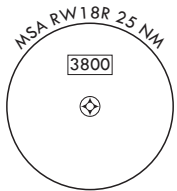
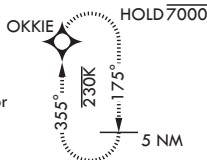


SC-1, 14 MAY 2026 to 11 JUN 2026

SC-1, 14 MAY 2026 to 11 JUN 2026

**AUTHORIZATION  
REQUIRED  
FOR USE BY 97  
AMW ACFT ONLY**

ATC RADAR required for holding above 4000.



EMERG SAFE ALT 100 NM 4900

ZOCKS 8000	FOXIN 5500	PELUE 4300	AFAVO 3400	DEWBO 3200	HOGIS 2900	RW18R 175°	4000 tr 175°	OKKIE	ELEV 1382	TDZE 1378
GP 3.00° TCH 53						4.6 NM			ASSAULT STRIP 13,440 x 1,150	TWR BCN
CATEGORY	A	B	C	D						
RNP 0.10 DA*	1679/40	301	(300-3/4)							
RNP 0.30 DA**	1783/50	405	(500-1)							
HIRL all rwys										

ALTUS, OKLAHOMA

34°40'N - 99°16'W

ALTUS AFB (KLTS)

Amdt 2 14JUL22

# RNAV (RNP) X RWY 18R