

ALTUS, OKLAHOMA

RNAV (RNP) X RWY 36L

APCH CRS	Rwy Idg	13,440
355°	TDZE	1354
	Arprt Elev	1382

(USAF)

ALTUS AFB (KLTS)

RNP AR APCH - RF

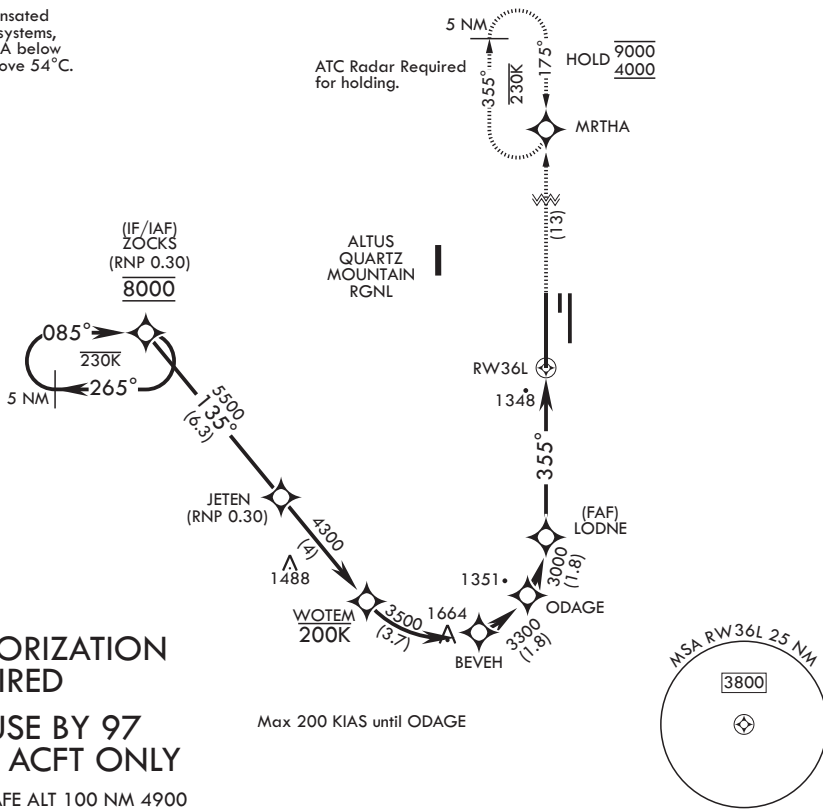
▼ * When ALS inop, increase RVR to 45, vis to 7/8 mile.
 ** When ALS inop, increase RVR to 55, vis to 1 mile.



MISSED APPROACH: Climb to 4000 on track 355° to MRTHA and hold.

ATIS* 109.8 273.5	APP CON 125.1 353.7	TOWER* 119.65 254.4	GND CON 121.85 275.8
----------------------	------------------------	------------------------	-------------------------

For uncompensated Baro-VNAV systems, procedure NA below -17°C or above 54°C.



AUTHORIZATION REQUIRED
FOR USE BY 97 AMW ACFT ONLY
 EMERG SAFE ALT 100 NM 4900

Max 200 KIAS until ODAGE

<p>ZOCKS 8000</p> <p>JETEN 5500</p> <p>WOTEM 4300</p> <p>BEVEH 3500</p> <p>ODAGE 3300</p> <p>LODNE 3000</p> <p>RW36L 1348</p> <p>GP 3.00° TCH 55</p>	<p>4000</p> <p>MRTHA</p> <p>ELEV 1382</p> <p>TDZE 1354</p>	<p>MRTHA 9000</p> <p>MRTHA 4000</p> <p>MRTHA 3500</p> <p>MRTHA 3000</p> <p>MRTHA 2500</p> <p>MRTHA 2000</p> <p>MRTHA 1500</p> <p>MRTHA 1000</p> <p>MRTHA 500</p> <p>MRTHA 0</p>															
<table border="1"> <thead> <tr> <th>CATEGORY</th> <th>A</th> <th>B</th> <th>C</th> <th>D</th> </tr> </thead> <tbody> <tr> <td>RNP 0.10 DA*</td> <td>1646/24</td> <td>292</td> <td>(300-1/2)</td> <td></td> </tr> <tr> <td>RNP 0.30 DA**</td> <td>1732/35</td> <td>378</td> <td>(400-3/4)</td> <td></td> </tr> </tbody> </table>			CATEGORY	A	B	C	D	RNP 0.10 DA*	1646/24	292	(300-1/2)		RNP 0.30 DA**	1732/35	378	(400-3/4)	
CATEGORY	A	B	C	D													
RNP 0.10 DA*	1646/24	292	(300-1/2)														
RNP 0.30 DA**	1732/35	378	(400-3/4)														

ALTUS, OKLAHOMA
 Amdt 2 14JUL22

34°40'N - 99°16'W

ALTUS AFB (KLTS)

RNAV (RNP) X RWY 36L

SC-1, 14 MAY 2026 to 11 JUN 2026

SC-1, 14 MAY 2026 to 11 JUN 2026