

ALTUS, OKLAHOMA

RNAV (RNP) Y RWY 18L

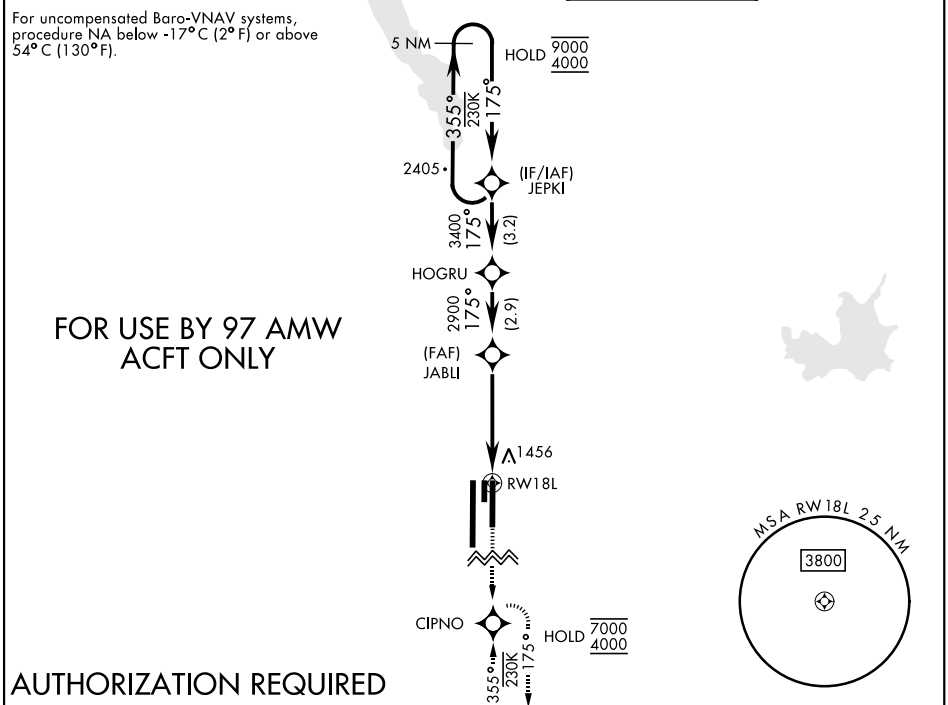
APCH CRS	Rwy Idg	9001
175°	TDZE	1382
	Arprt Elev	1382

[USAF]

ALTUS AFB (KLTS)

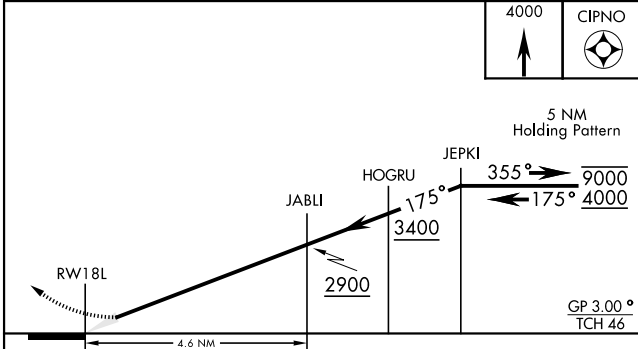
RNP AR APCH - GPS	SALSF A2	MISSED APPROACH: Climb to 4000 direct CIPNO and hold.
<p>▼*When ALS inop, increase RVR to 45, vis to 7/8 mile. **When ALS inop, increase RVR to 55, vis to 1 mile.</p>		

ATIS ★ 109.8 273.5	FORT WORTH CENTER 133.5 350.35	APP CON 125.1 353.7	TOWER ★ 119.65 254.4	GND CON 121.85 275.8
------------------------------	--	-------------------------------	--------------------------------	--------------------------------



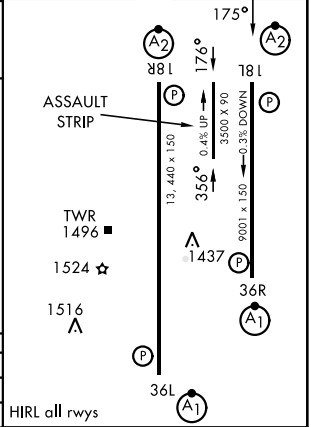
AUTHORIZATION REQUIRED

EMERG SAFE ALT 100 NM 4900



ELEV	1382	TDZE	1382
------	------	------	------

CATEGORY	A	B	C	D
RNP 0.10 DA*	1644/40	262	(300-3/4)	
RNP 0.30 DA**	1729/40	347	(400-3/4)	



ALTUS, OKLAHOMA 34°40'N-99°16'W ALTUS AFB (KLTS)

Amdt 2 10AUG23

RNAV (RNP) Y RWY 18L

SC-1, 14 MAY 2026 to 11 JUN 2026

SC-1, 14 MAY 2026 to 11 JUN 2026