

ALTUS, OKLAHOMA

RNAV (GPS) Z RWY 18L

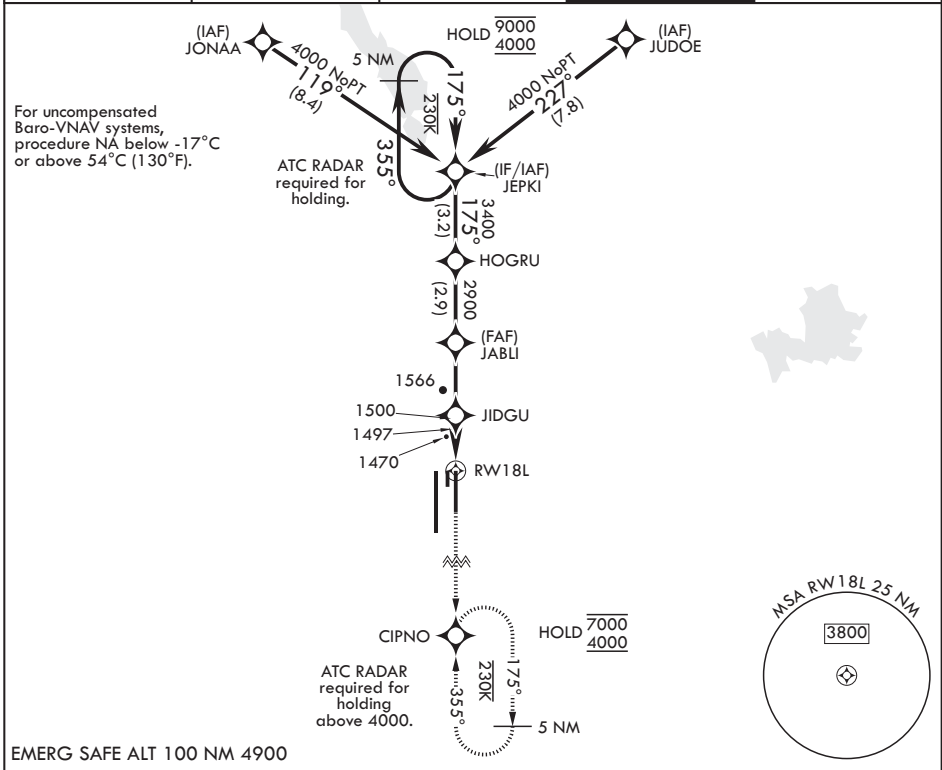
APCH CRS	Rwy Idg	9001
175°	TDZE	1382
	Arprt Elev	1382

(USAF)

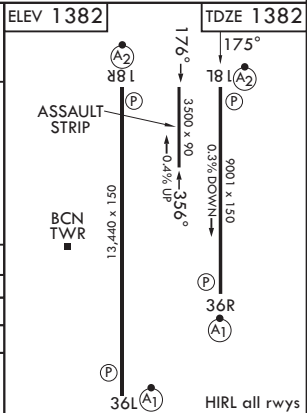
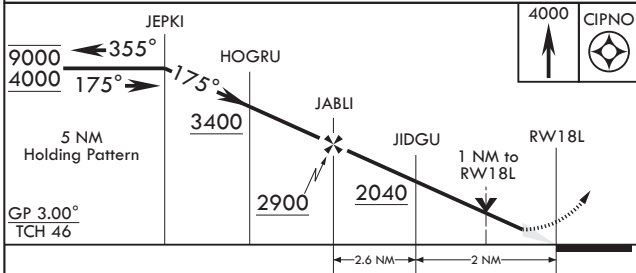
ALTUS AFB (KLTS)

RNP APCH-GPS	SALSF	MISSED APPROACH: Climb to 4000 direct CIPNO and hold.
<p>▼ * When ALS inop, increase RVR to 55, vis to 1 mile. ** Circling NA W of Rwy 18R-36L.</p>	(A2)	

ATIS* 109.8 273.5	FORT WORTH CENTER 133.5 350.35	APP CON 125.1 353.7	TOWER* 119.65 254.4	GND CON 121.85 275.8
----------------------	-----------------------------------	------------------------	------------------------	-------------------------



EMERG SAFE ALT 100 NM 4900



CATEGORY	A	B	C	D	E
LNAV/VNAV DA	1632/40		250	(300-¾)	
LNAV MDA*	1760/40		378	(400-¾)	
CIRCLING**	1780-1 398 (400-1)	1840-1 458 (500-1)	1880-1½ 498 (500-1½)	2080-2¼ 698 (700-2¼)	2300-3 918 (1000-3)

ALTUS, OKLAHOMA

34°40'N - 99°16'W

ALTUS AFB (KLTS)

Amdt 3 14MAY26

RNAV (GPS) Z RWY 18L

SC-1, 14 MAY 2026 to 11 JUN 2026

SC-1, 14 MAY 2026 to 11 JUN 2026