

ALTUS, OKLAHOMA

RNAV (GPS) Z RWY 36L

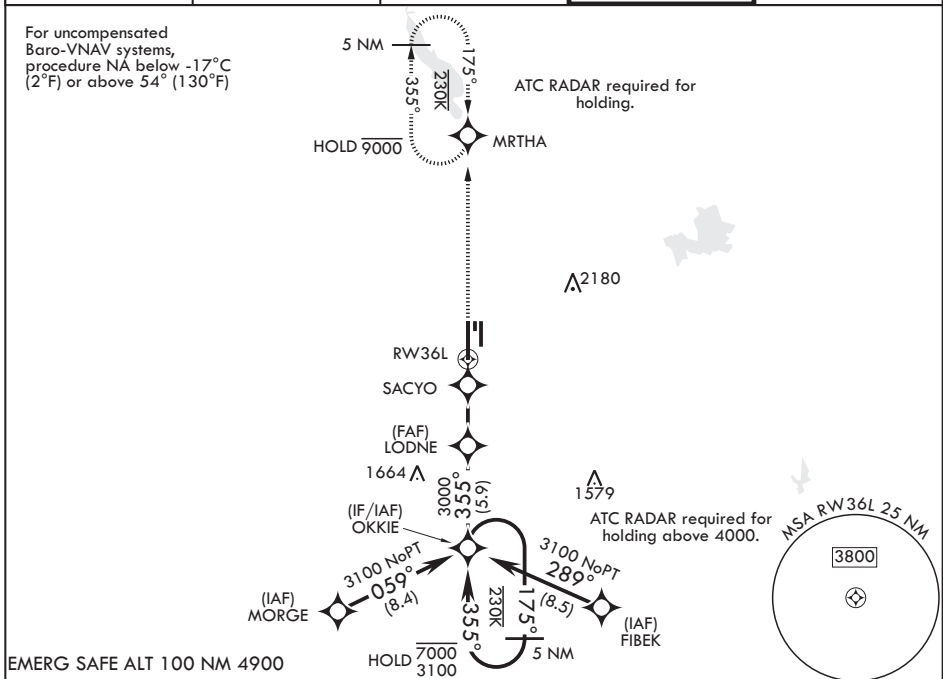
APCH CRS	Rwy Idg	13,440
355°	TDZE	1354
	Arprt Elev	1382

(USAF)

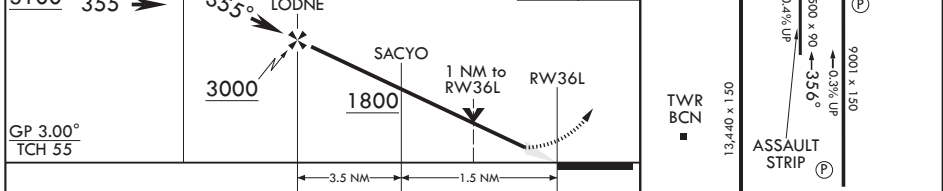
ALTUS AFB (KLTS)

RNP APCH-GPS	ALSF-1	MISSED APPROACH: Climb to 4000 direct MRTHA and hold.
<p>▼ * When ALS inop increase CAT AB RVR to 40, vis to 3/4 mile; CAT CD RVR to 45, vis to 7/8 mile; CAT E RVR to 50, vis to 1 mile.</p> <p>** When ALS inop, increase CAT AB RVR to 55, vis to 1 mile; CAT CDE RVR to 60, vis to 1 1/8 miles.</p> <p>*** Circling not authorized W of Rwy 18R-36L.</p>		

ATIS★ 109.8 273.5	FORT WORTH CENTER 133.5 350.35	APP CON 125.1 353.7	TOWER★ 119.65 254.4	GND CON 121.85 275.8
----------------------	-----------------------------------	------------------------	------------------------	-------------------------



EMERG SAFE ALT 100 NM 4900



CATEGORY	A	B	C	D	E
LNAV/VNAV DA*	1604/24	250 (300-½)	1615/24 261 (300-½)	1634/24 280 (300-½)	1677/26 323 (300-½)
LNAV MDA**	1740/24	386 (400-½)	1740/35	386	(400-¾)
CIRCLING***	1780-1 398 (400-1)	1840-1 458 (500-1)	1880-1½ 498 (500-1½)	2080-2¼ 698 (700-2¼)	2180-2¾ 798 (800-2¾)

ALTUS, OKLAHOMA
Amdt 3 14JUL22

34°40'N - 99°16'W

ALTUS AFB (KLTS)

RNAV (GPS) Z RWY 36L

SC-1, 14 MAY 2026 to 11 JUN 2026

SC-1, 14 MAY 2026 to 11 JUN 2026