

ALTUS, OKLAHOMA

VOR or TACAN RWY 18R


VORTAC LTS 109.8 Chan 35	APCH CRS 171°	Rwy Idg 13,440 TDZE 1378 Arpt Elev 1382
--	-------------------------	--

[USAF]

ALTUS AFB (KLTS)

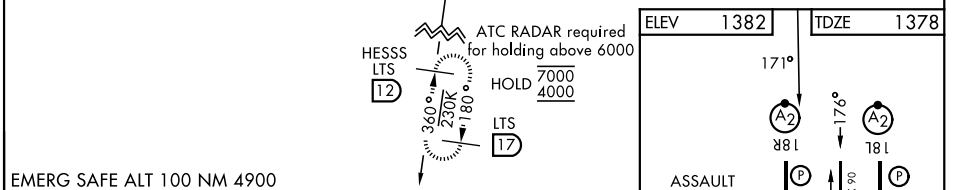
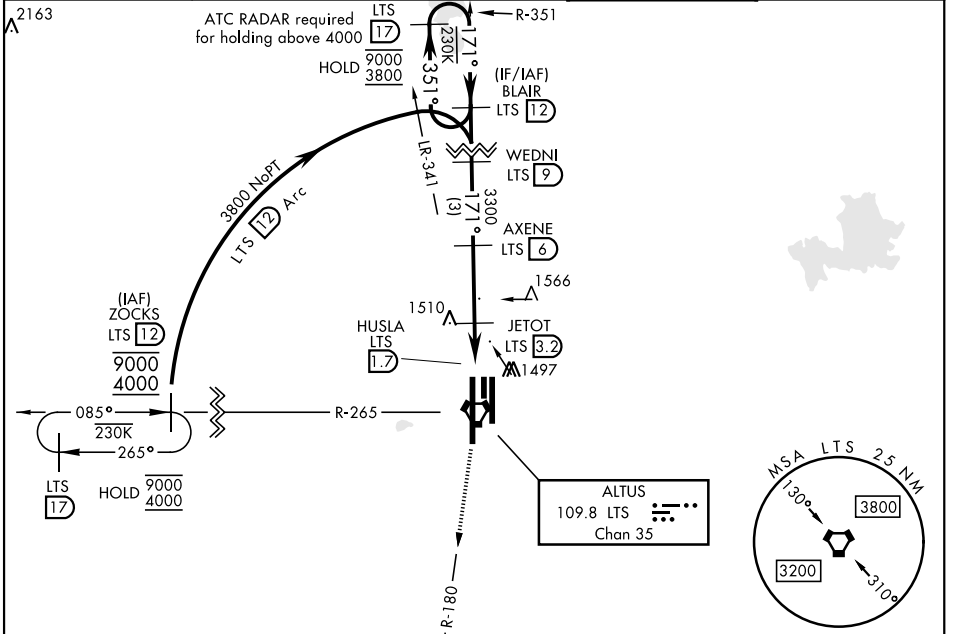
DME required

▼ * When ALS inop, increase CAT AB RVR to 55 and vis to 1 mile, CAT CDE RVR to 60 and vis to 1½ miles.
** Circling not authorized W of Rwy 18R-36L.

SALSF 

MISSED APPROACH: Climb to 4000 on LTS VORTAC R-180 to HESSS and hold.

ATIS ★ 109.8 273.5	FORT WORTH CENTER 133.5 350.35	APP CON 125.1 353.7	TOWER ★ 119.65 254.4	GND CON 121.85 275.8
------------------------------	--	-------------------------------	--------------------------------	--------------------------------



EMERG SAFE ALT 100 NM 4900	↑ AXENE to MAP	4000 LTS R-180	HESSS LTS 12
----------------------------	----------------	-------------------	-----------------

CATEGORY	A	B	C	D	E
S-18R*	1760/40	382 (400-¾)	1760/45	382	(400-¾)
CIRCLING**	1780-1 398 (400-1)	1840-1 458 (500-1)	1880-1½ 498 (500-1½)	2080-2¼ 698 (700-2¼)	2300-3 918 (1000-3)

HIRL all Rwy's

ALTUS, OKLAHOMA 34° 40' N-99° 16' W ALTUS AFB (KLTS)

Amtd 4 14MAY26

VOR or TACAN RWY 18R

SC-1, 14 MAY 2026 to 11 JUN 2026

SC-1, 14 MAY 2026 to 11 JUN 2026