

ALTUS, OKLAHOMA

VOR or TACAN RWY 36L

VORTAC LTS 109.8 Chan 35	APCH CRS 360°	Rwy Idg 13,440 TDZE 1354 Arprt Elev 1382
--	-------------------------	---

[USAF]

ALTUS AFB (KLTS)

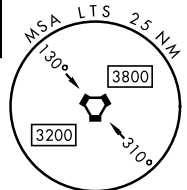
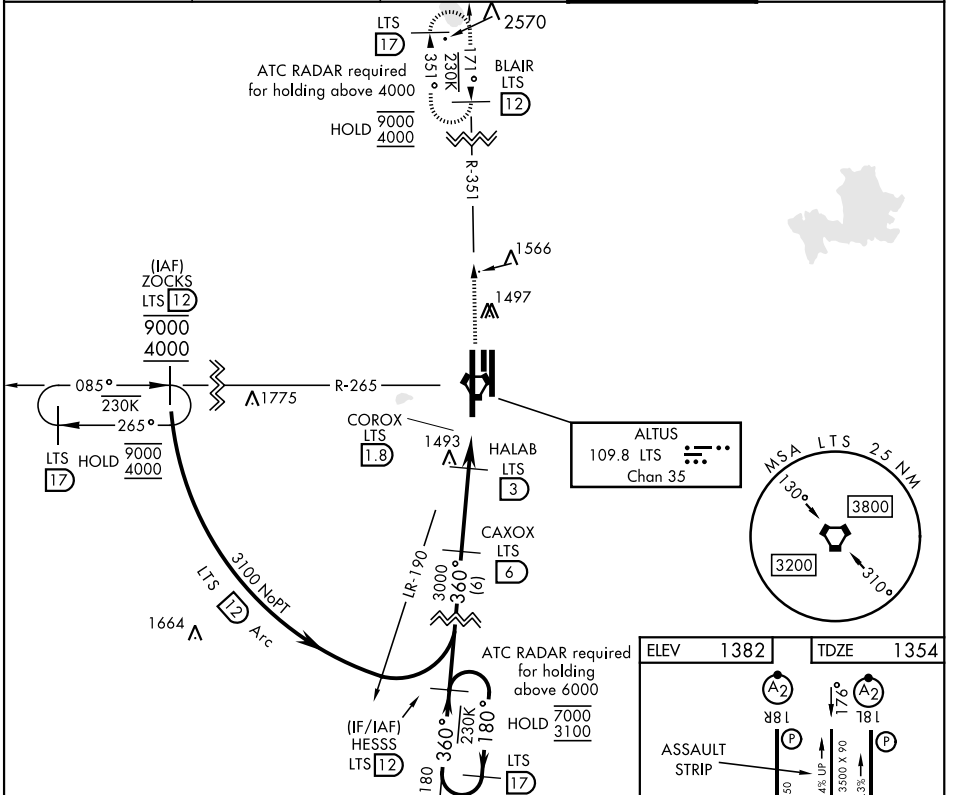
DME required



MISSED APPROACH: Climb to 4000 on LTS VORTAC R-351 to BLAIR and hold.

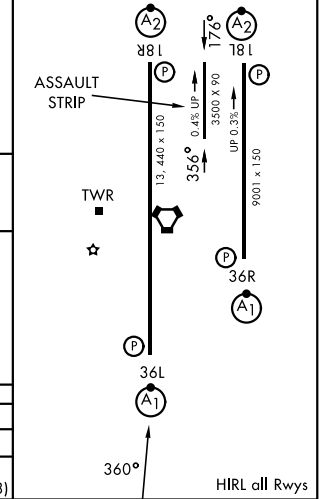
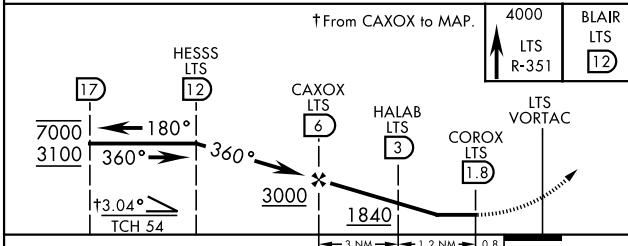
▼ * When ALS inop, increase CAT AB RVR to 55 and vis to 1 mile, CAT CDE RVR to 60 and vis to 1½ miles.
** Circling not authorized W of Rwy 18R-36L.

ATIS ★ 109.8 273.5	FORT WORTH CENTER 133.5 350.35	APP CON 125.1 353.7	TOWER ★ 119.65 254.4	GND CON 121.85 275.8
------------------------------	--	-------------------------------	--------------------------------	--------------------------------



ELEV 1382	TDZE 1354
-----------	-----------

EMERG SAFE ALT 100 NM 4900



CATEGORY	A	B	C	D	E
S-36L*	1760/24	406 (400-½)	1760/40	406 (400-¾)	
CIRCLING**	1780-1 398 (400-1)	1840-1 458 (500-1)	1880-1½ 498 (500-1½)	2080-2¼ 698 (700-2¼)	2300-3 918 (1000-3)

ALTUS, OKLAHOMA

34°40'N-99°16'W

ALTUS AFB (KLTS)

Amdt 4 14MAY26

VOR or TACAN RWY 36L

SC-1, 14 MAY 2026 to 11 JUN 2026

SC-1, 14 MAY 2026 to 11 JUN 2026