

WAAS CH 90300 W05A	APP CRS 054°	Rwy Idg TDZE Apt Elev	4301 79 79
--	------------------------	-----------------------------	---------------------------------------

RNAV (GPS) RWY 5

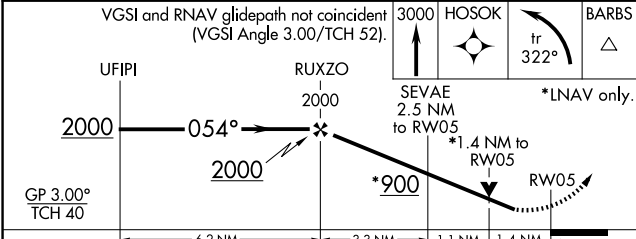
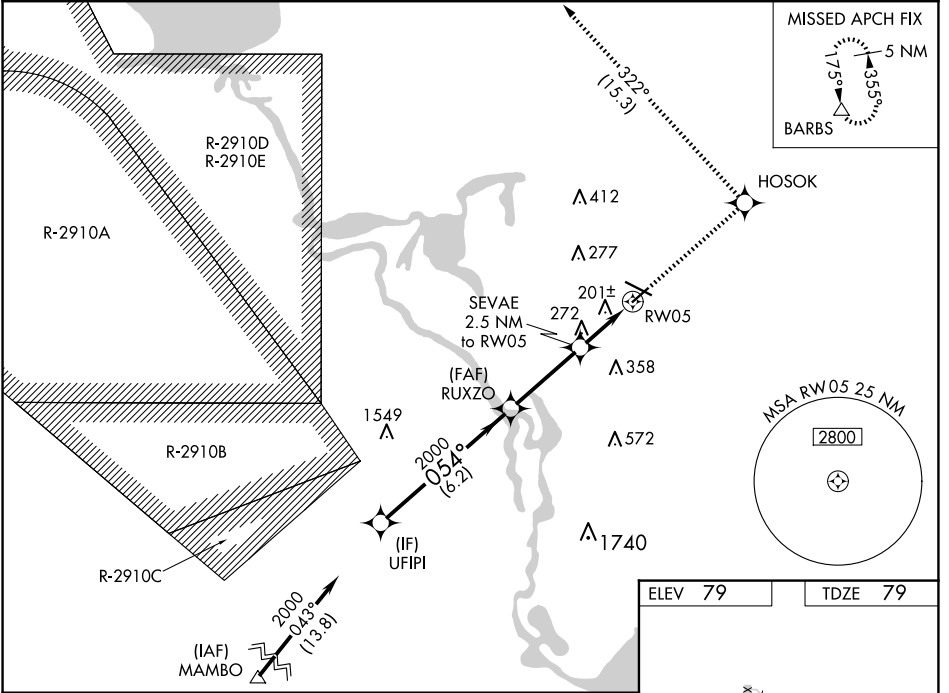
DELAND MUNI-SIDNEY H TAYLOR FLD (DED)

RNP APCH.

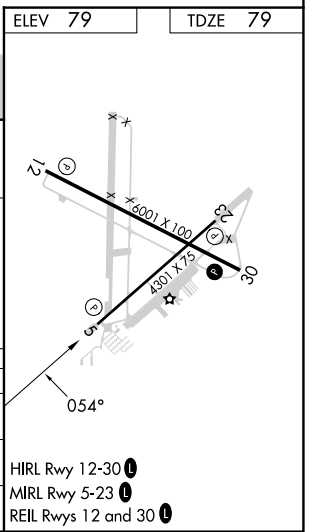
⚠ For uncompensated Baro-VNAV systems, LNAV/VNAV NA below -15°C (5°F) or above 54°C (130°F). Rwy 5 helicopter visibility reduction below ¾ SM NA. When local altimeter setting not received, use Daytona Beach Intl altimeter setting and increase all DAs 38 feet and all MDAs 40 feet; increase LPV all Cats, LNAV/VNAV all Cats, and LNAV Cat D visibility ¼ mile.

MISSED APPROACH: Climb to 3000 direct HOSOK and left turn on track 322° to BARBS and hold.

AWOS-3 119.575	DAYTONA APP CON 125.35 322.3	UNICOM 123.075 (CTAF)
--------------------------	--	---------------------------------



GP 3.00° TCH 40	UFIFI	RUXZO	SEVAE	HOSOK	BARBS
	6.2 NM	3.3 NM	1.1 NM	1.4 NM	
CATEGORY	A	B	C	D	
LPV DA	385-1		306 (400-1)		
LNAV/VNAV DA	577-1¾		498 (500-1¾)		
LNAV MDA	580-1 501 (600-1)		580-1⅜ 501 (600-1⅜)		



SE-3, 14 MAY 2026 to 11 JUN 2026

SE-3, 14 MAY 2026 to 11 JUN 2026