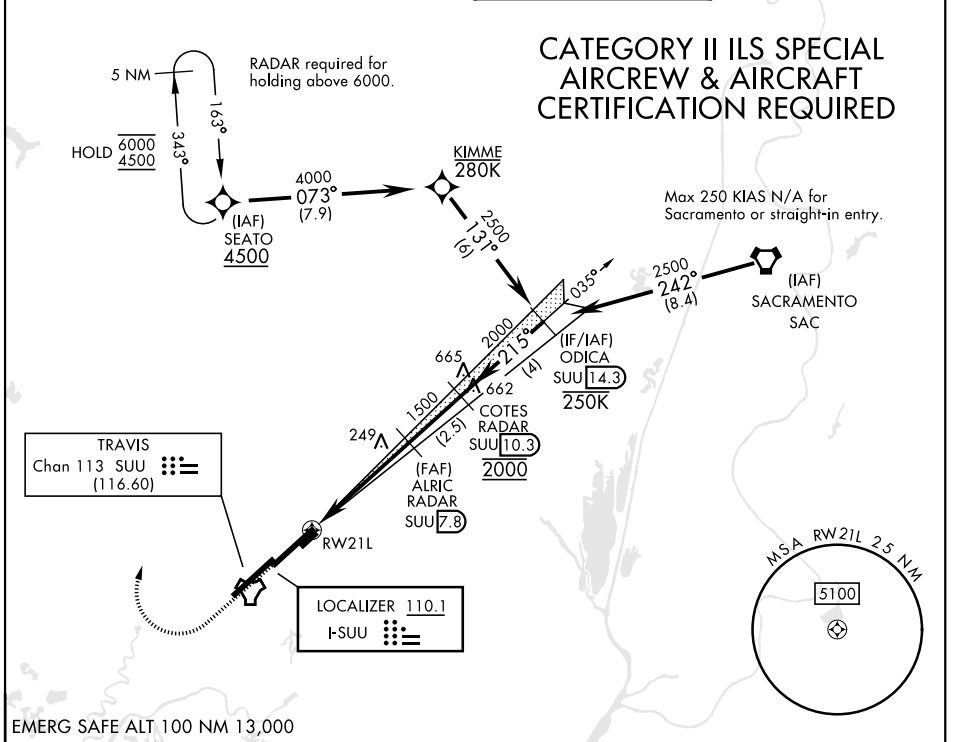


ILS RWY 21L (CAT II)

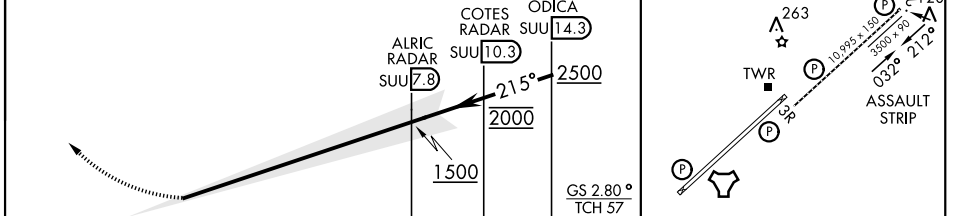
LOC I-SUU 110.1	APCH CRS 215°	Rwy Idg 10,995 TDZE 58 Arprt Elev 63	[USAF]	TRAVIS AFB (KSUU)
---------------------------	-------------------------	---	--------	-------------------

RNAV1 - GPS or RADAR required	ALSF-2 	MISSED APPROACH: Climb to 2200 then climbing right turn to 4500 direct SEATO and hold, continue climb in hold to 4500.
RADAR required for CAT E aircraft for full procedure off of SEATO.		

ATIS 135.55 292.125	APP CON 119.9 322.325 (S) 126.6 281.45 (N)	TOWER 120.75 254.4	GND CON 121.8 289.4
-------------------------------	--	------------------------------	-------------------------------



2200 4500 SEATO 	VGSI and glidepath not coincident (VGSI Angle 2.80/TCH 75).	ELEV 63	TDZE 58
---------------------------	--	---------	---------



CATEGORY	A	B	C	D	E
S-ILS 21L	RA 83/12		100	DA 158	

HIRL Rwy 3R-21L
TDZL/RCLS Rwy 3R, 21L

ILS RWY 21L (CAT II)

SW-2, 14 MAY 2026 to 11 JUN 2026

SW-2, 14 MAY 2026 to 11 JUN 2026