

WAAS CH <b>70714</b> <b>W23A</b>	APP CRS <b>233°</b>	Rwy Ldg TDZE Apt Elev	<b>5590</b> <b>5505</b> <b>5507</b>
--	------------------------	-----------------------------	---

# RNAV (GPS) RWY 23

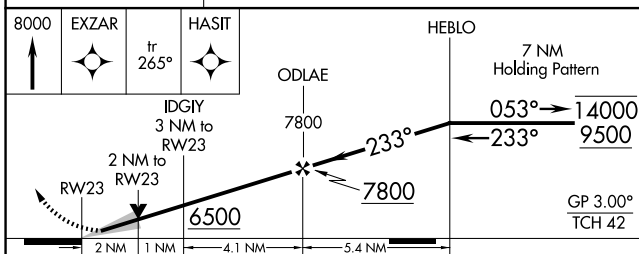
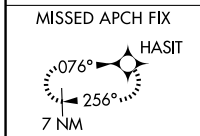
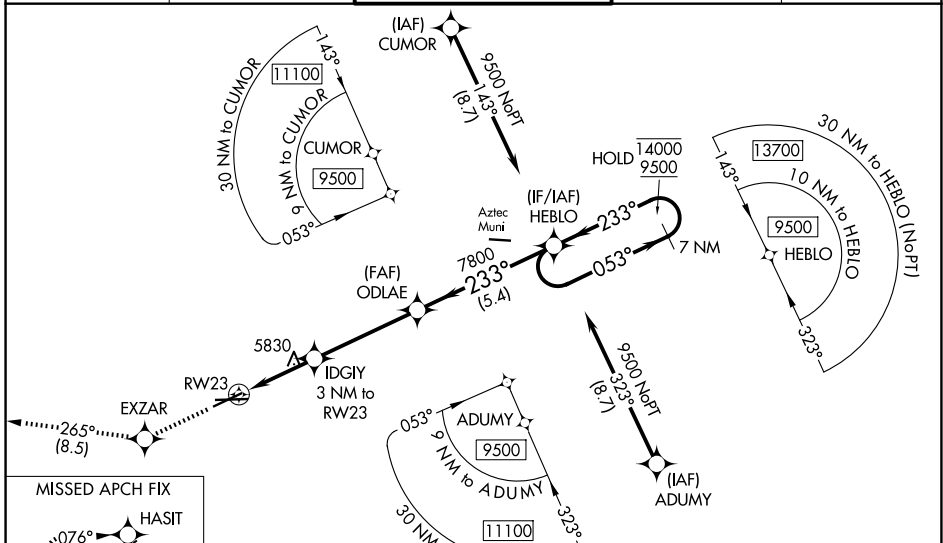
FOUR CORNERS RGNL (FMN)

RNP APCH - GPS.

**⚠** Baro-VNAV and VDP NA when using Durango altimeter setting. For uncompensated Baro-VNAV systems, LNAV/VNAV NA below -16°C or above 54°C. Circling NA for Cat D southeast of Rwy 5 and south of Rwy 25. When local altimeter setting not received, use Durango altimeter setting and increase LPV DA to 5998 feet and all visibilities ½ SM. Increase LNAV/VNAV DA to 6274 feet and all visibilities 1 SM. Increase all MDAs 260 feet and LNAV visibilities Cat B ¼ SM, C/D ⅓ SM and Circling visibility Cat A/B ¼ SM and Cat C ½ SM.

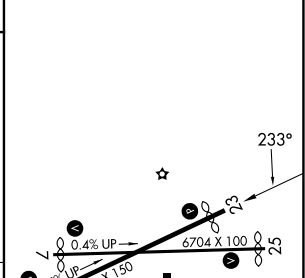
MISSED APPROACH: Climb to 8000 direct EXZAR and on track 265° to HASIT and hold.

ATIS <b>127.15</b>	DENVER CENTER <b>118.575 348.7</b>	FARMINGTON TOWER* <b>118.9 (CTAF) 257.8</b>	GND CON <b>121.7</b>	UNICOM <b>122.95</b>
-----------------------	---------------------------------------	--	-------------------------	-------------------------



CATEGORY	A	B	C	D
LPV DA	5755-¾		250 (300-¾)	
LNAV/VNAV DA	6031-1½		526 (600-1½)	
LNAV MDA	6080-1	575 (600-1)	6080-1½	575 (600-1½)
CIRCLING	6100-1 593 (600-1)	6140-1 633 (700-1)	6380-2½ 873 (900-2½)	6400-3 893 (900-3)

ELEV 5507	<b>D</b> TDZE 5505
-----------	--------------------



REIL Rwy 23 and 25 **Ⓛ**  
MIRL Rwy 5-23 and 7-25 **Ⓛ**

SW-1, 14 MAY 2026 to 11 JUN 2026

SW-1, 14 MAY 2026 to 11 JUN 2026