

WAAS CH 90110 W07A	APP CRS 076°	Rwy Ldg TDZE Apt Elev	6248 5502 5507
--	------------------------	-----------------------------	---

RNAV (GPS) RWY 7

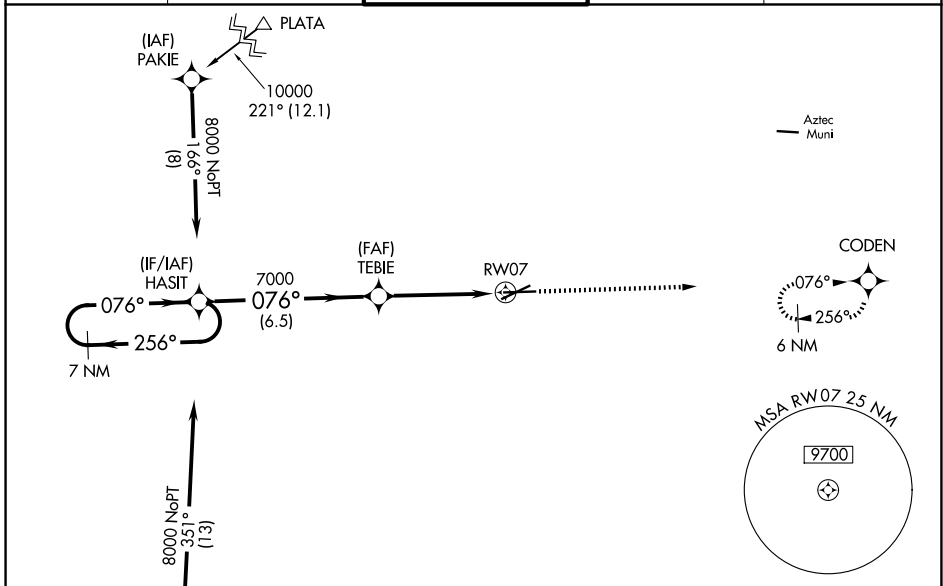
FOUR CORNERS RGNL (FMN)

RNP APCH-GPS.

⚠ Baro-VNAV and VDP NA when using Durango altimeter setting. For uncompensated Baro-VNAV systems, LNAV/VNAV NA below -25°C or above 54°C. Circling NA for Cat D southeast of Rwy 5 and south of Rwy 25. When local altimeter setting not received, use Durango altimeter setting and increase LPV DA to 6003 feet and LNAV/VNAV DA to 6223 and all visibilities 5/8 SM; increase all MDAs 260 feet and visibility LNAV Cats B/C/D and Circling Cats A/B/C 7/8 SM.

MISSED APPROACH:
Climb to 8300 direct
CODEN and hold.

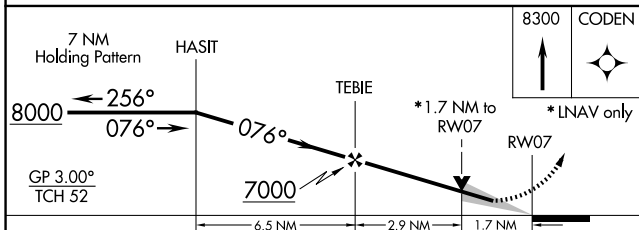
ATIS 127.15	DENVER CENTER 118.575 348.7	FARMINGTON TOWER* 118.9 (CTAF) 257.8	GND CON 121.7	UNICOM 122.95
-----------------------	---------------------------------------	---	-------------------------	-------------------------



SW-1, 14 MAY 2026 to 11 JUN 2026

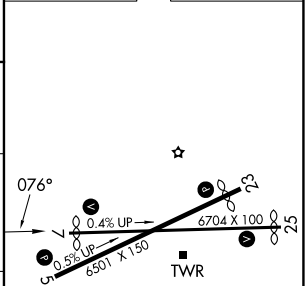
SW-1, 14 MAY 2026 to 11 JUN 2026

Procedure NA for arrivals at DERMA via V95 southwest bound.



ELEV 5507	D TDZE 5502
-----------	--------------------

CATEGORY	A	B	C	D
LPV DA		5760-3/4	258 (300-3/4)	
LNAV/VNAV DA		5980-1 3/8	478 (500-1 3/8)	
LNAV MDA	6060-1	558 (600-1)	6060-1 5/8	558 (600-1 5/8)
CIRCLING	6100-1 593 (600-1)	6180-1 673 (700-1)	6380-2 1/2 873 (900-2 1/2)	6460-3 953 (1000-3)



REIL Rwy 23 and 25 **Ⓢ**
MIRL Rwy 5-23 and 7-25 **Ⓢ**