

VORTAC RSK <b>115.3</b> Chan <b>100</b>	APP CRS <b>070°</b>	Rwy Ldg TDZE Apt Elev <b>5590</b> <b>5498</b> <b>5507</b>
---	------------------------	--

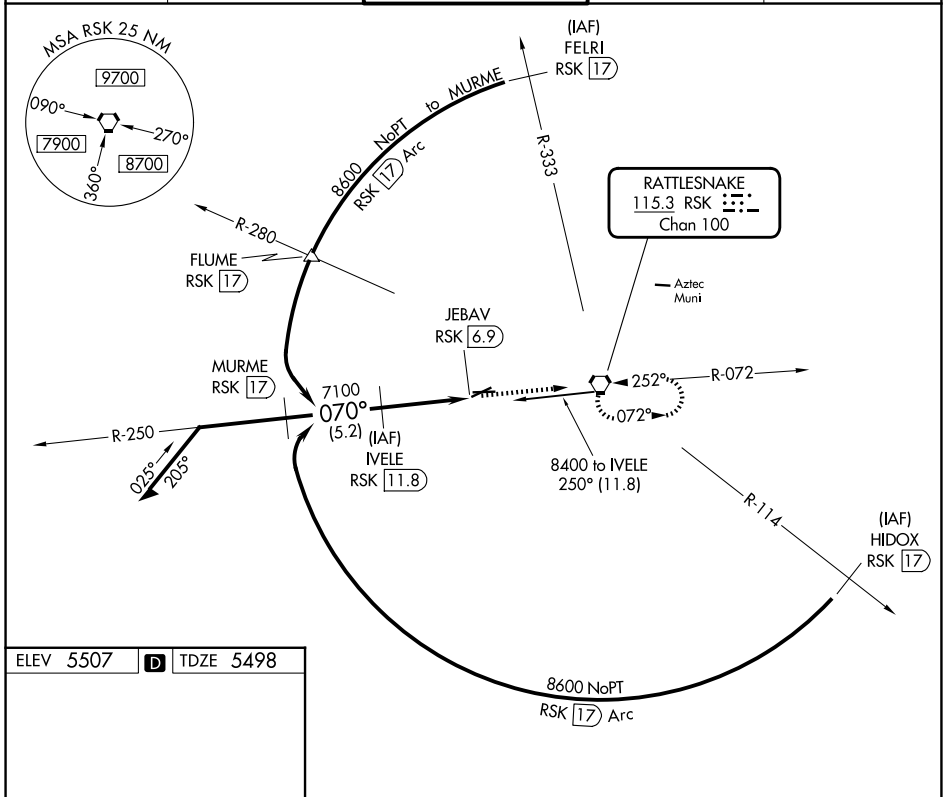
# VOR/DME RWY 5

FOUR CORNERS RGNL (FMN)

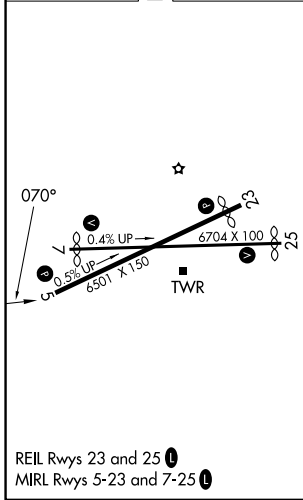
**⚠** Circling NA for Cat D southeast of Rwy 5 and south of Rwy 25. VDP NA when using Durango altimeter setting. When local altimeter not received, use Durango altimeter setting and increase all MDAs 260 feet and visibility Cats B/C/D and Circling Cats A/B/C 7/5 SM.

**MISSED APPROACH:** Climb to 8300 direct RSK VORTAC and hold.

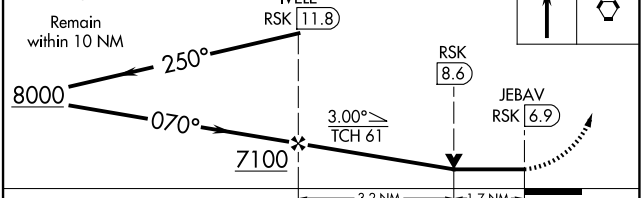
ATIS <b>127.15</b>	DENVER CENTER <b>118.575 348.7</b>	FARMINGTON TOWER* <b>118.9 (CTAF) 0257.8</b>	GND CON <b>121.7</b>	UNICOM <b>122.95</b>
-----------------------	---------------------------------------	---	-------------------------	-------------------------



ELEV 5507	<b>D</b>	TDZE 5498
-----------	----------	-----------



VGSI and descent angles not coincident (VGSI Angle 3.00/TCH 42).



CATEGORY	A	B	C	D
S-5	6060-1	562 (600-1)	6060-1½	562 (600-1½)
CIRCLING	6100-1 593 (600-1)	6180-1 673 (700-1)	6380-2½ 873 (900-2½)	6460-3 953 (1000-3)

SW-1, 14 MAY 2026 to 11 JUN 2026

SW-1, 14 MAY 2026 to 11 JUN 2026