

# HI-TACAN Y RWY 6

TACAN HST Chan <b>19</b>	APCH CRS <b>056°</b>	Rwy ldg <b>11,201</b> TDZE Arpt Elev <b>5</b>
-----------------------------	-------------------------	---

[USAF]

HOMESTEAD ARB (KHST)

▼ \* When ALS inop, increase vis to 1½ miles.  
 \*\* Circling NA NW of Rwy 6-24.

ALSF-1

MISSED APPROACH: Climb to 800 then climbing right turn to 3000 intercept HST TACAN R-180 to JOMIN and hold.

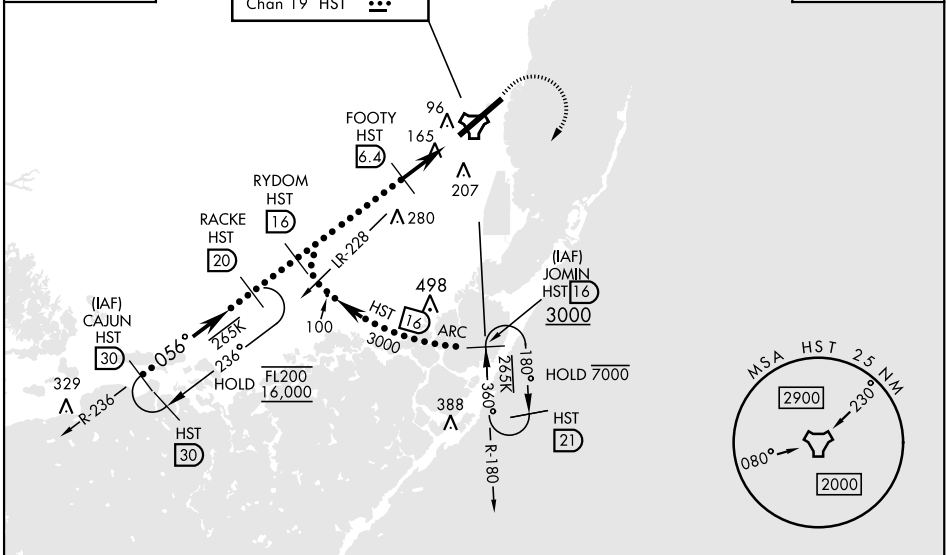
ATIS ★ <b>132.275 269.9</b>	APP CON <b>123.8 257.675</b>	TOWER <b>133.45 279.55</b>	GND CON <b>121.75 275.8</b>
--------------------------------	---------------------------------	-------------------------------	--------------------------------

RACKE HOLDING

CAUTION: Heliport and stadium 2.2 NM final Rwy 6 at Homestead ARB (stadium may be lit after dark).

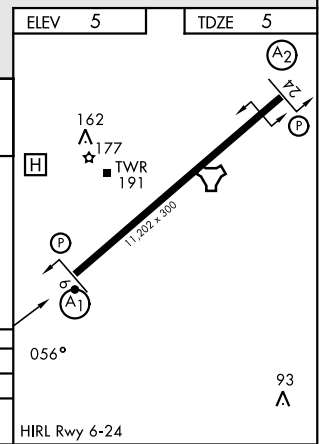
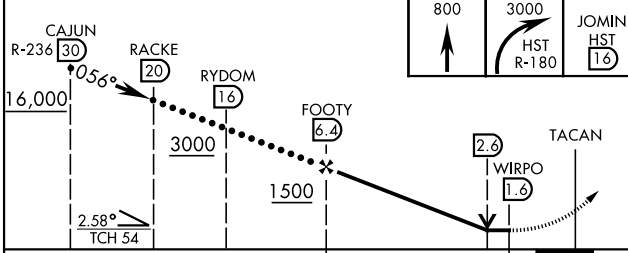
Missed approach requires use of RNAV or ATC RADAR monitoring.

JOMIN HOLDING



ELEV 5	TDZE 5
--------	--------

EMERG SAFE ALT 100 NM 15,100



CATEGORY	C	D	E
S-6 *	460/45	455	(500-7½)
CIRCLING **	520-1½ 514 (600-1½)	580-2 574 (600-2)	780-2¾ 774 (800-2¾)

# HI-TACAN Y RWY 6

SE-3, 14 MAY 2026 to 11 JUN 2026

SE-3, 14 MAY 2026 to 11 JUN 2026