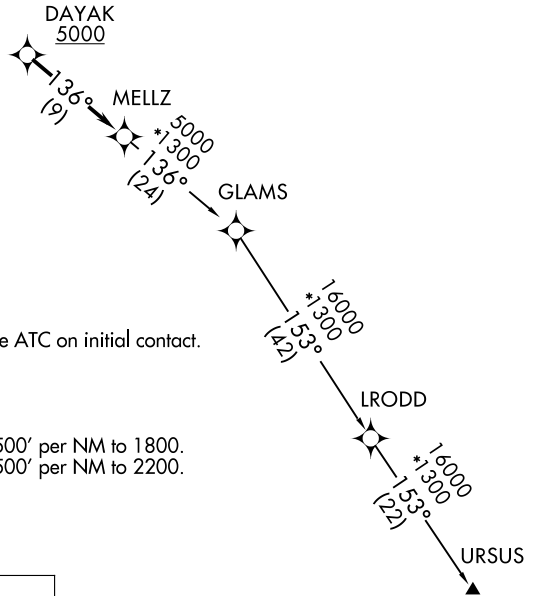
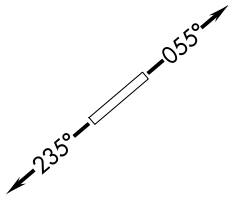


# MELLZ TWO DEPARTURE (RNAV)

**TOP ALTITUDE:  
ASSIGNED BY ATC**

ATIS★  
 132.275 269.9  
 CLNC DEL  
 121.75 275.8  
 GND CON  
 121.75 275.8  
 HOMESTEAD TOWER  
 133.45 279.55  
 MIAMI DEP CON  
 125.5 354.1



NOTE: If unable to accept climb rate, advise ATC on initial contact.

### TAKEOFF MINIMUMS

Rwy 6: Standard with minimum climb of 500' per NM to 1800.  
 Rwy 24: Standard with minimum climb of 500' per NM to 2200.

RNAV 1-DME/DME/IRU or GPS.  
 RADAR required for non-GPS equipped aircraft.

NOTE: Chart not to scale.



### DEPARTURE ROUTE DESCRIPTION

TAKEOFF RUNWAY 6: Climb on heading 055° or as assigned by ATC for RADAR vectors to cross DAYAK at or above 5000 thence. . . .

TAKEOFF RUNWAY 24: Climb on heading 235° or as assigned by ATC for RADAR vectors to cross DAYAK at or above 5000 thence. . . .

. . . on track 136° to MELLZ, then on assigned transition. Maintain ATC assigned altitude, expect clearance to filed altitude within 10 minutes after departure.

GLAMS TRANSITION (MELLZ2.GLAMS)

URSUS TRANSITION (MELLZ2.URSUS)