

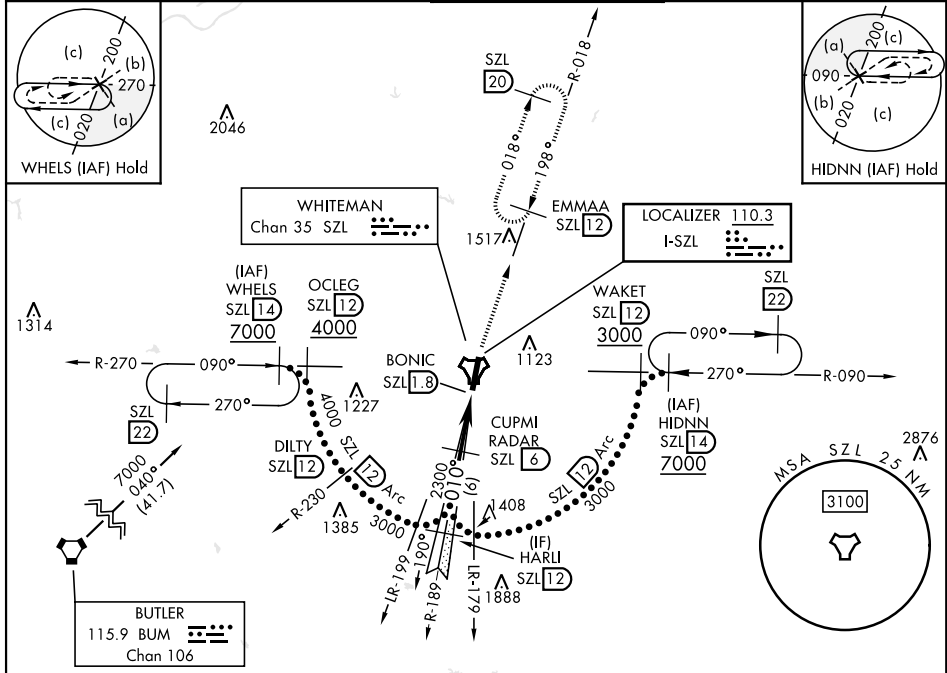
KNOB NOSTER, MISSOURI

HI-ILS or LOC Z RWY 1

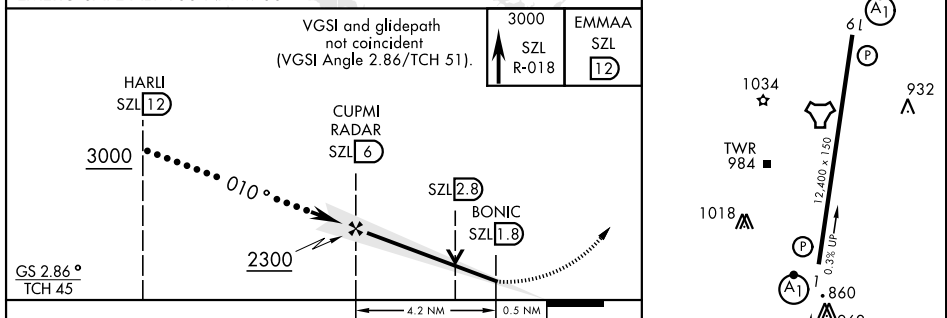
LOC I-SZL 110.3	APCH CRS 010°	Rwy Idg 12,400 TDZE 837 Arprt Elev 871	[USAF]	WHITEMAN AFB (KSZL)
---------------------------	-------------------------	---	--------	---------------------

RADAR or DME required.	ALSF-1 (A1)	MISSED APPROACH: Climb to 3000 via SZL TACAN R-018 to EMMAA and hold.
------------------------	-----------------------	---

ATIS ★ 118.725 239.025	APP CON ★ 127.45 284.0	TOWER ★ 132.4 318.8	GND CON ★ 119.125 275.8	ASR
----------------------------------	----------------------------------	-------------------------------	-----------------------------------	-----



EMERG SAFE ALT 100 NM 4700	ELEV 871	TDZE 837
----------------------------	----------	----------



CATEGORY	C	D	E	HIRL Rwy 1-19
S-ILS 1*	1037/24	200	(200-½)	FAF to MAP 4.2 NM
S-LOC 1**	1340/55	503	(500-1)	
CIRCLING***	1340-1 ½ 469 (500-1 ½)	1440-2 569 (600-2)	1460-2 589 (600-2)	
				Knots
				120
				140
				160
				180
				200
				Min:Sec
				2:06
				1:48
				1:35
				1:24
				1:16

KNOB NOSTER, MISSOURI 38°44'N-93°33'W WHITEMAN AFB (KSZL)

HI-ILS or LOC Z RWY 1

NC-3, 14 MAY 2026 to 11 JUN 2026

NC-3, 14 MAY 2026 to 11 JUN 2026

