

KNOB NOSTER, MISSOURI

HI-ILS or LOC Z RWY 19

LOC I-MXJ 108.5	APCH CRS 190°	Rwy Idg 12,400 TDZE 871 Arprt Elev 871
---------------------------	-------------------------	---

[USAF]

WHITEMAN AFB (KSZL)

RADAR or DME required

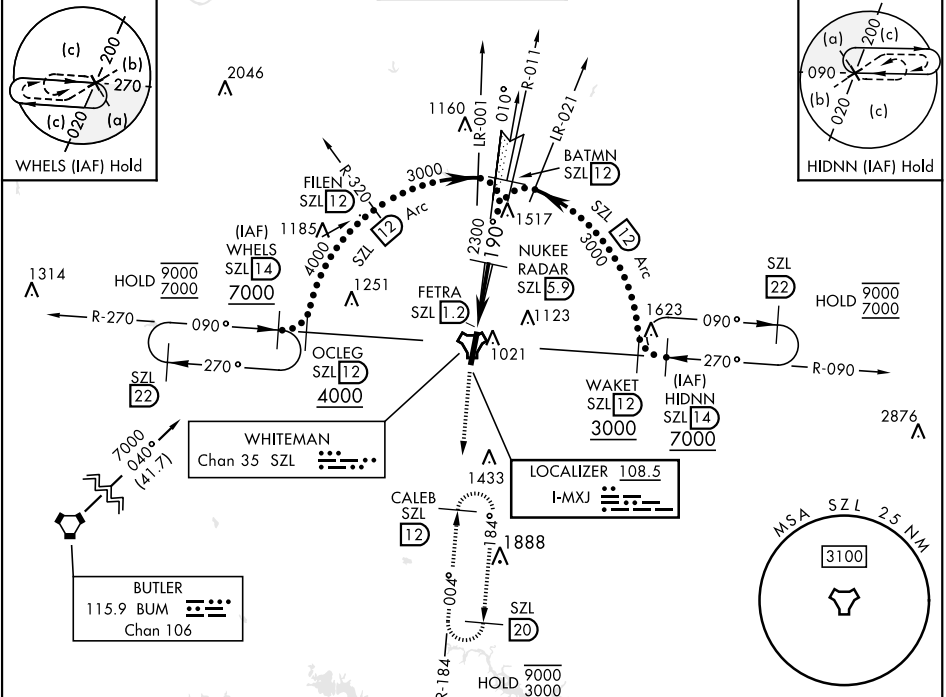
- ▲ *When ALS inop, increase CAT CDE RVR to 40 and vis to ¾ mile.
- ** When ALS inop, increase CAT CDE vis to 1½ miles.
- *** Circling not authorized W of Rwy 1-19.

ALSF-1



MISSED APPROACH: Climb to 3000 via SZL TACAN R-184 to CALEB and hold.

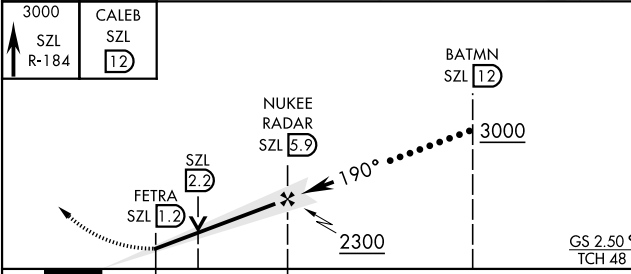
ATIS ★ 118.725 239.025	APP CON ★ 127.45 284.0	TOWER ★ 132.4 318.8	GND CON ★ 119.125 275.8	ASR
----------------------------------	----------------------------------	-------------------------------	-----------------------------------	-----



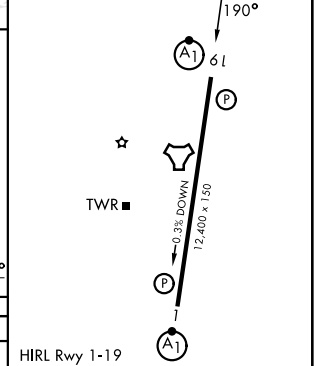
NC-3, 14 MAY 2026 to 11 JUN 2026

NC-3, 14 MAY 2026 to 11 JUN 2026

EMERG SAFE ALT 100 NM 4700



ELEV 871	TDZE 871
----------	----------



CATEGORY	C	D	E
S-ILS 19*	1071/24	200	(200-½)
S-LOC 19**	1300/40	429	(500-¾)
CIRCLING***	1340-1½ 469 (500-1½)	1440-2 569 (600-2)	1460-2 589 (600-2)

FAF to MAP 4.7 NM					
Knots	120	140	160	180	200
Min:Sec	2:21	2:01	1:46	1:34	1:25

KNOB NOSTER, MISSOURI

38°44'N-93°33'W

WHITEMAN AFB (KSZL)

Amtd 2 25DEC25

HI-ILS or LOC Z RWY 19