

KNOB NOSTER, MISSOURI

# HI-TACAN Z RWY 1

TACAN SZL Chan <b>35</b>	APCH CRS <b>004°</b>	Rwy Idg <b>12,400</b> TDZE <b>837</b> Arprt Elev <b>871</b>
-----------------------------	-------------------------	---

[USAF]

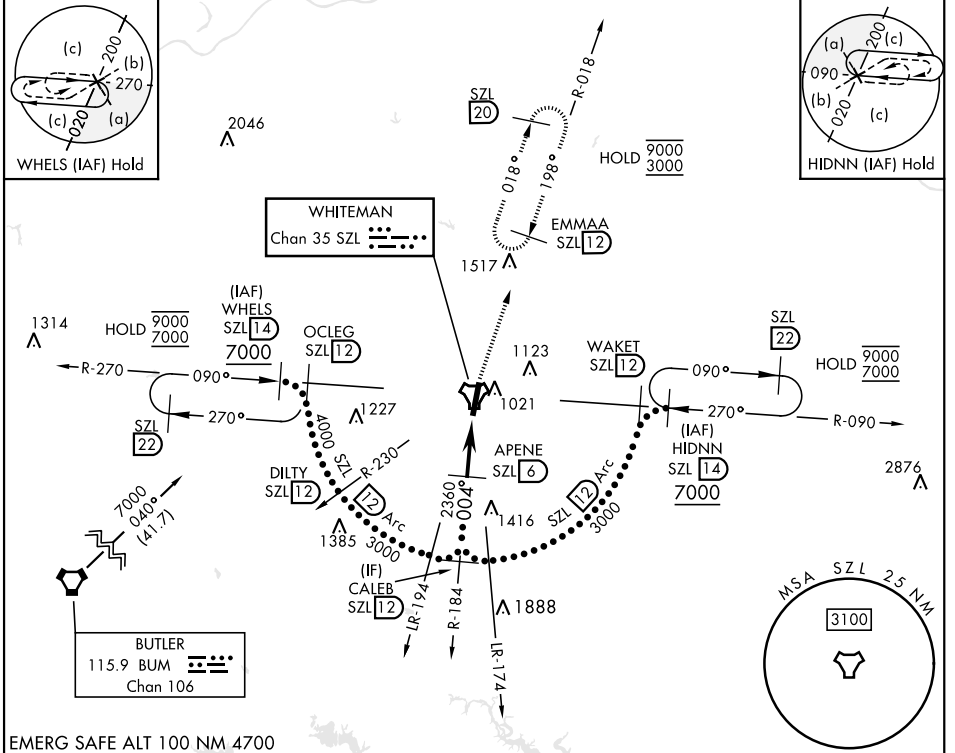
WHITEMAN AFB (KSZL)

▼ \* When ALS inop, increase CAT CDE vis to 1½ miles.  
 \*\* Circling not authorized W of Rwy 1-19.



MISSED APPROACH: Climb to 3000 via  
 SZL TACAN R-018 to EMMAA and hold.

ATIS ★ <b>118.725 239.025</b>	APP CON ★ <b>127.45 284.0</b>	TOWER ★ <b>132.4 318.8</b>	GND CON ★ <b>119.125 275.8</b>	ASR
----------------------------------	----------------------------------	-------------------------------	-----------------------------------	-----

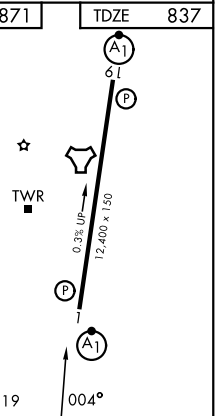


NC-3, 14 MAY 2026 to 11 JUN 2026

NC-3, 14 MAY 2026 to 11 JUN 2026

EMERG SAFE ALT 100 NM 4700

	3000 SZL R-018	EMMAA SZL 12	ELEV 871	TDZE 837
CATEGORY	C	D	E	
S-1 *	1360/55 523 (500-1)			
CIRCLING **	1360-1½ 489 (500-1½)	1440-2 569 (600-2)	1460-2 589 (600-2)	
HIRL Rwy 1-19				



KNOB NOSTER, MISSOURI  
 Amdt 2 25DEC25

38° 44' N-93° 33' W

WHITEMAN AFB (KSZL)

# HI-TACAN Z RWY 1