

KNOB NOSTER, MISSOURI

# ILS or LOC Y RWY 1

LOC I-SZL <b>110.3</b>	APCH CRS <b>010°</b>	Rwy ldg TDZE Arprt Elev	<b>12,400</b> <b>837</b> <b>871</b>
---------------------------	-------------------------	-------------------------------	---

(USAF)

WHITEMAN AFB (KSZL)

RADAR or DME required

ALSF-1

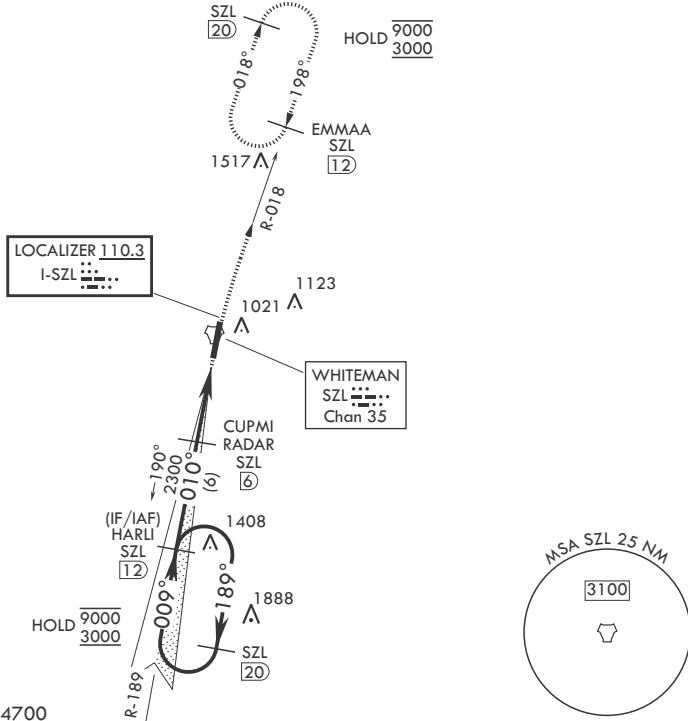
MISSED APPROACH: Climb to 3000 via SZL TACAN R-018 to EMMAA and hold.

- \* When ALS inop, increase CAT ABCDE RVR to 40, vis to 3/4 mile.
- \*\* When ALS inop, increase CAT AB RVR to 55, vis to 1 mile; CAT CDE vis to 1 3/8 miles.
- \*\*\* Circling not authorized W of Rwy 1-19.

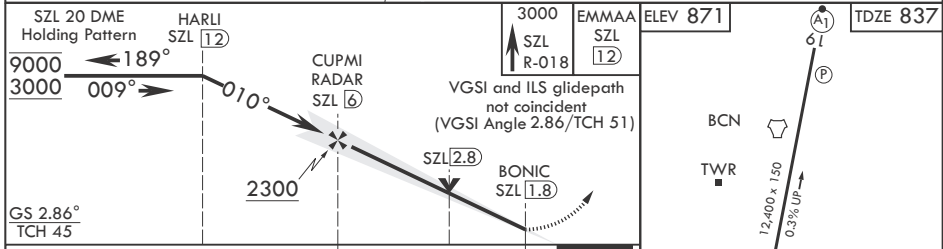


ATIS★ <b>118.725 239.025</b>	APP CON★ <b>127.45 284.0</b>	TOWER★ <b>132.4 318.8</b>	GND CON★ <b>119.125 275.8</b>	ASR
---------------------------------	---------------------------------	------------------------------	----------------------------------	-----

\*\*\* Circling not authorized W of Rwy 1-19.



EMERG SAFE ALT 100 NM 4700



CATEGORY	A	B	C	D	E
S-ILS 1*	1037/24		200	(200-½)	
S-LOC 1**	1340/24	503 (500-½)	1340/55	503	(500-1)
CIRCLING***	1340-1	469 (500-1)	1340-1½ 469 (500-1½)	1440-2 569 (600-2)	1460-2 589 (600-2)

HIRL all rwys					
FAF to MAP 4.2 NM					
Knots	60	90	120	150	180
Min:Sec	4:12	2:48	2:06	1:41	1:24

KNOB NOSTER, MISSOURI

38°44'N - 93°33'W

WHITEMAN AFB (KSZL)

Amdt 2 25DEC25

# ILS or LOC Y RWY 1

NC-3, 14 MAY 2026 to 11 JUN 2026

NC-3, 14 MAY 2026 to 11 JUN 2026