

WAAS CH <b>72905</b> <b>W04A</b>	APP CRS <b>039°</b>	Rwy Ldg TDZE Apt Elev	<b>5000</b> <b>2885</b> <b>2885</b>
--	------------------------	-----------------------------	---

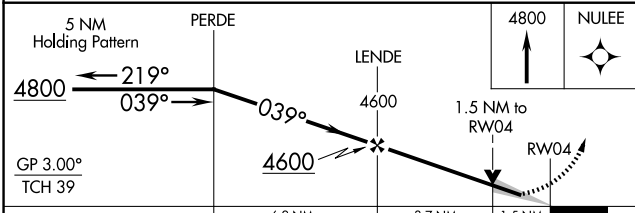
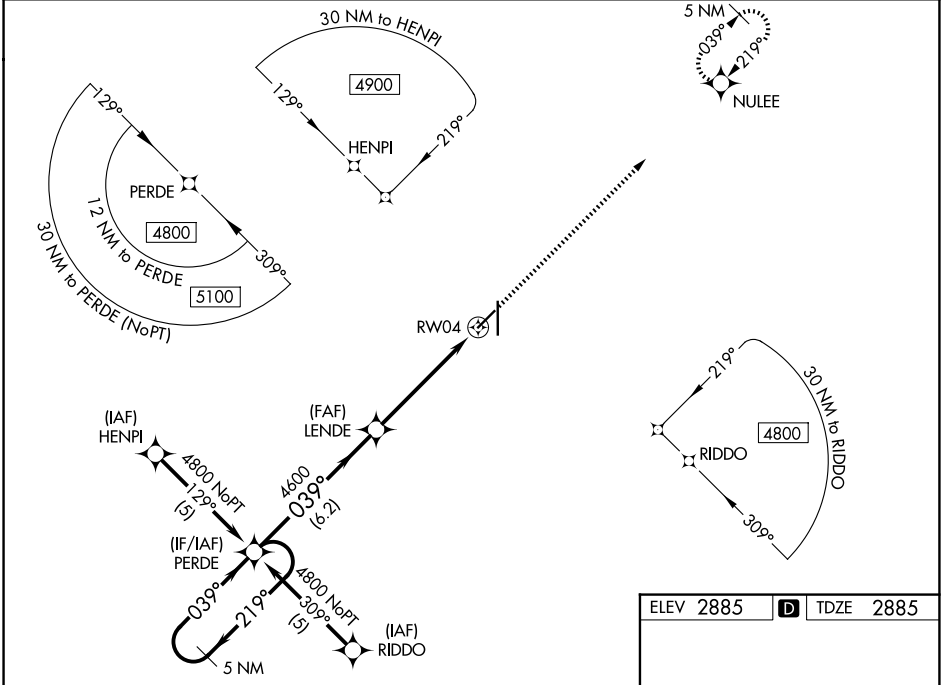
**RNAV (GPS) RWY 4**  
LIBERAL MID-AMERICA RGNL (L.B.L.)

RNP APCH - GPS.

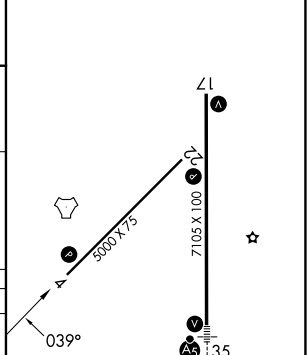
▼ For uncompensated Baro-VNAV systems, LNAV/VNAV NA below -20°C or above 54°C.  
 ▲ Circling NA east of Rwy 17-35. When local altimeter setting not received, use GUY altimeter setting and increase LPV DA to 3248 feet; increase LNAV/VNAV DA to 3412 feet and all visibilities 3/8 SM. Increase all MDAs 120 feet and LNAV visibility Cat C/D 3/8 SM, and Circling visibility Cat C/D 1/4 SM. Baro-VNAV and VDP NA when using GUY altimeter setting.

MISSED APPROACH: Climb to 4800 direct NULEE and hold.

AWOS-3PT <b>118.375</b>	KANSAS CITY CENTER <b>134.0 257.625</b>	UNICOM <b>122.8 (CTAF)</b>
----------------------------	--	-------------------------------



ELEV 2885	<b>D</b> TDZE 2885
-----------	--------------------



CATEGORY	A	B	C	D
LPV DA	3136-1		251 (300-1)	
LNAV/VNAV DA	3300-1 3/8		415 (500-1 3/8)	
LNAV MDA	3400-1 515 (600-1)		3400-1 3/8 515 (600-1 3/8)	
CIRCLING	3400-1 515 (600-1)		3400-1 1/2 3640-2 1/2 755 (800-2 1/2)	

REIL Rws 4, 17 and 22 **L**  
 MRL Rwy 4-22 **L**  
 HIRL Rwy 17-35 **L**

NC-2, 14 MAY 2026 to 11 JUN 2026

NC-2, 14 MAY 2026 to 11 JUN 2026