

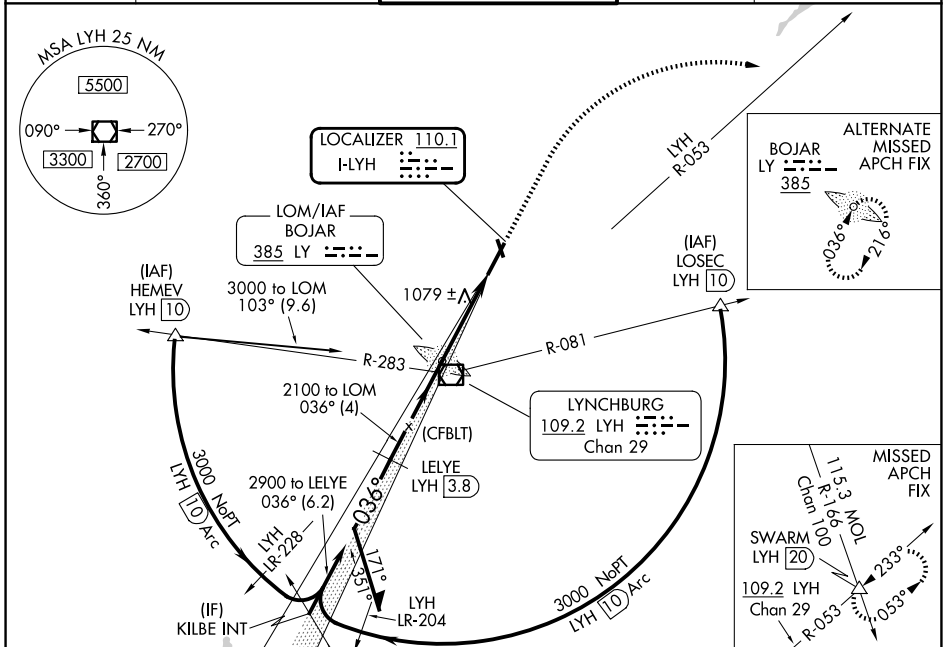
ILS or LOC RWY 4

LYNCHBURG RGNL/PRESTON GLENN FLD (LYH)

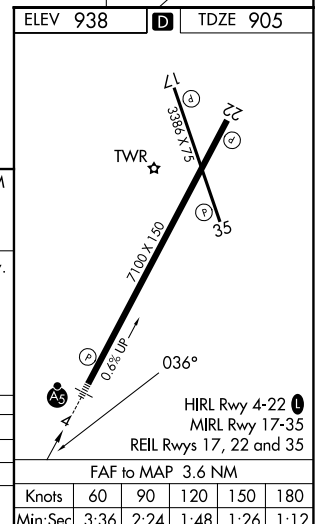
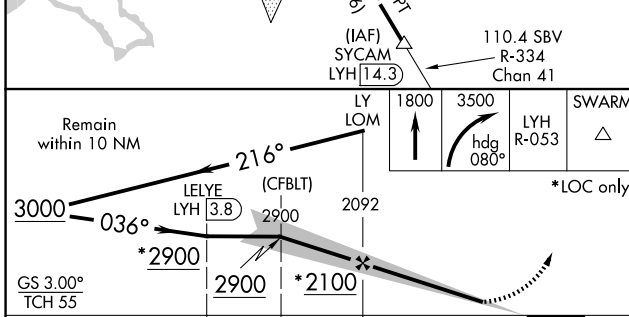
LOC I-LYH 110.1	APP CRS 036°	Rwy Ldg TDZE Apt Elev	6800 905 938
---------------------------	------------------------	-----------------------------	---

ADF required for LOC only. DME required.	MALSR	MISSED APPROACH: Climb to 1800 then climbing right turn to 3500 on heading 080° and on LYH VOR/DME R-053 to SWARM INT/LYH 20 DME and hold.
⚠ Circling Rwy 17 NA at night. DME from LYH VOR/DME. Simultaneous reception of I-LYH and LYH DME required.	AS	
⚠ ** RVR 1800 authorized with use of FD or AP or HUD to DA.		

ATIS 119.8	ROANOKE APP CON 135.0 254.325	LYNCHBURG TOWER ★ 127.65 (CTAF) 0 257.8	GND CON 121.9	UNICOM 122.95
----------------------	---	---	-------------------------	-------------------------



ELEV 938	D	TDZE 905
----------	---	----------



CATEGORY	A	B	C	D
S-ILS 4 **	1105/24 200 (200-½)			
S-LOC 4	1320/24	415 (400-½)	1320/40	415 (400-¾)
CIRCLING	1660-1 722 (800-1)	1780-1¼ 842 (900-1¼)	1800-2½ 862 (900-2½)	1800-2¾ 862 (900-2¾)
	Knots 60 90 120 150 180			
	Min:Sec 3:36 2:24 1:48 1:26 1:12			

ILS or LOC RWY 4

NE-3, 14 MAY 2026 to 11 JUN 2026

NE-3, 14 MAY 2026 to 11 JUN 2026