

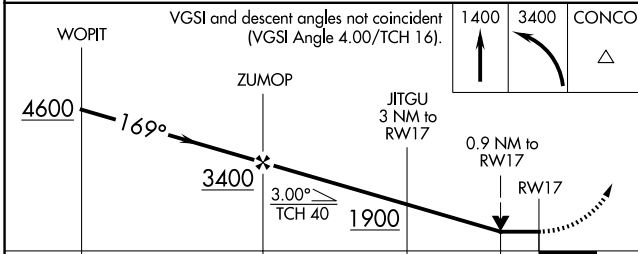
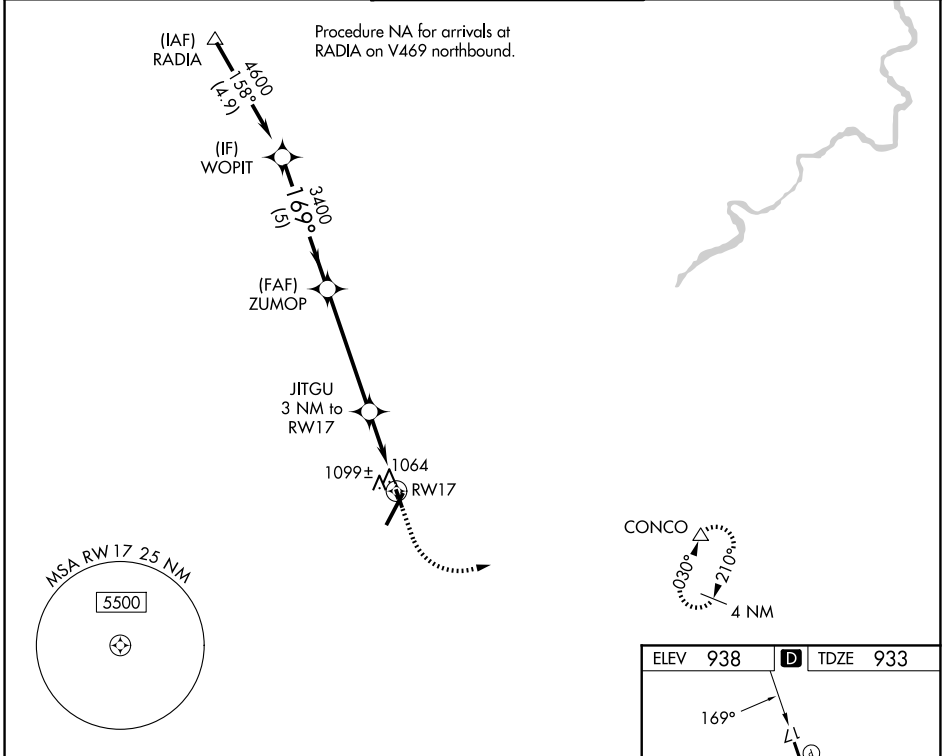
WAAS CH 48934 W17A	APP CRS 169°	Rwy Ldg TDZE Apt Elev	3386 933 938
--	------------------------	-----------------------------	---

RNAV (GPS) RWY 17

LYNCHBURG RGNL/PRESTON GLENN FLD (LYH)

RNP APCH.	MISSED APPROACH: Climb to 1400 then climbing left turn to 3400 direct CONCO and hold.
▼ Procedure NA at night. ▲ Rwy 17 helicopter visibility reduction below 1 SM NA.	

ATIS 119.8	ROANOKE APP CON 135.0 254.325	LYNCHBURG TOWER ★ 127.65 (CTAF) 257.8	GND CON 121.9	UNICOM 122.95
----------------------	---	---	-------------------------	-------------------------



ELEV 938	D TDZE 933
----------	-------------------

169°

3386x17.5

7100x150

0.6% UP

35

35

TWR ★

HIRL Rwy 4-22

MIRL Rwy 17-35

REIL Rws 17, 22 and 35

CATEGORY	A	B	C	D
LP MDA	1320-1	387 (400-1)		NA
LNAV MDA	1360-1	427 (500-1)		NA
CIRCLING	1660-1 722 (800-1)	1780-1¼ 842 (900-1¼)		NA

NE-3, 14 MAY 2026 to 11 JUN 2026

NE-3, 14 MAY 2026 to 11 JUN 2026