

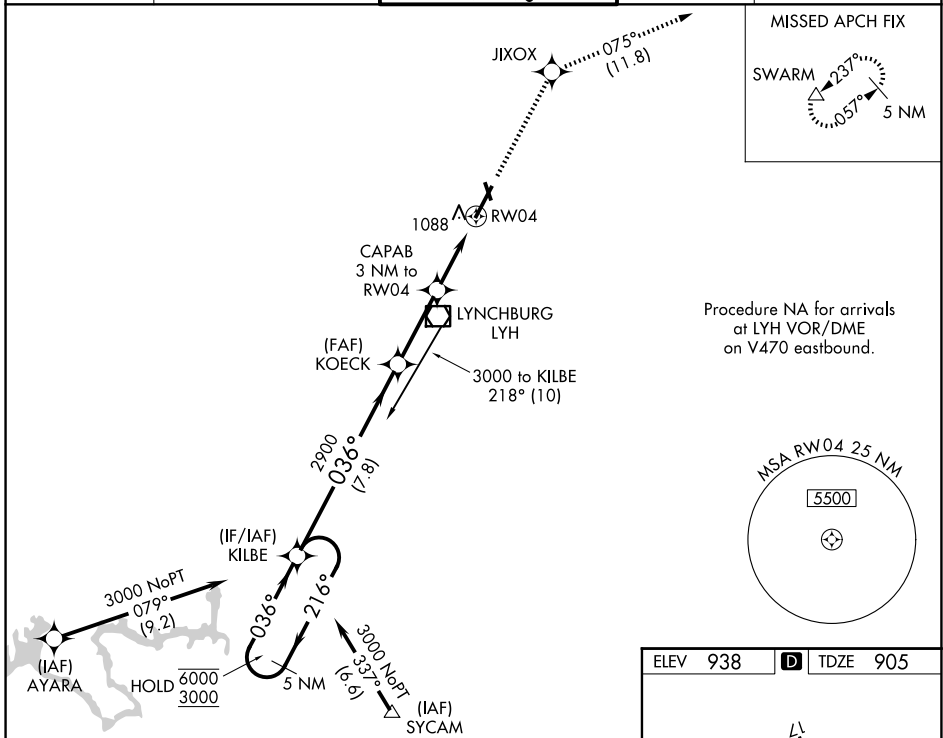
WAAS CH 58205 W04A	APP CRS 036°	Rwy Ldg TDZE Apt Elev	6800 905 938
--	------------------------	-----------------------------	---

RNAV (GPS) RWY 4

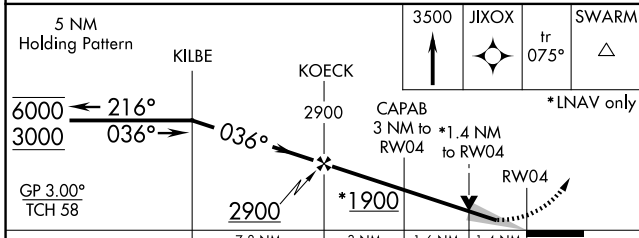
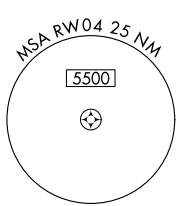
LYNCHBURG RGNL/PRESTON GLENN FLD (LYH)

RNP APCH.	MALSR	MISSED APPROACH: Climb to 3500 direct JIXOX and track 075° to SWARM and hold.
<p>▼ For uncompensated Baro-VNAV systems, LNAV/VNAV NA below -16°C or above 47°C. For inop ALS, increase LNAV Cat A and B visibility to RVR 5000.</p> <p>▲ Circling Rwy 17 NA at night.</p>		

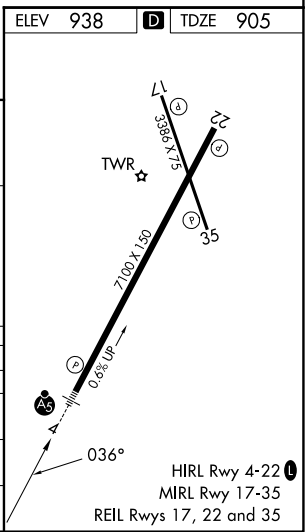
ATIS 119.8	ROANOKE APP CON 135.0 254.325	LYNCHBURG TOWER ★ 127.65 (CTAF) 0 257.8	GND CON 121.9	UNICOM 122.95
----------------------	---	---	-------------------------	-------------------------



Procedure NA for arrivals at LYH VOR/DME on V470 eastbound.



ELEV 938		TDZE 905	
5 NM Holding Pattern		3500	JIXOX
		↑	✧ tr 075°
			SWARM △
		*LNAV only	
KILBE		KOECK	CAPAB
6000 ← 216°		2900	3 NM to *1.4 NM to RWY 4
3000 → 036°			
GP 3.00° TCH 58		2900	*1900
			RWY 4
		7.8 NM	3 NM
		1.6 NM	1.4 NM
CATEGORY	A	B	C
LPV DA		1175/40	270 (300-¾)
LNAV/VNAV DA		1394/60	489 (500-1¼)
LNAV MDA	1400/40	495 (500-¾)	1400/50 495 (500-1)
CIRCLING	1660-1 722 (800-1)	1780-1¼ 842 (900-1¼)	1800-2½ 862 (900-2½) 1800-2¾ 862 (900-2¾)



NE-3, 14 MAY 2026 to 11 JUN 2026

NE-3, 14 MAY 2026 to 11 JUN 2026

RNAV (GPS) RWY 4