

HI-ILS or LOC/DME Z RWY 23L

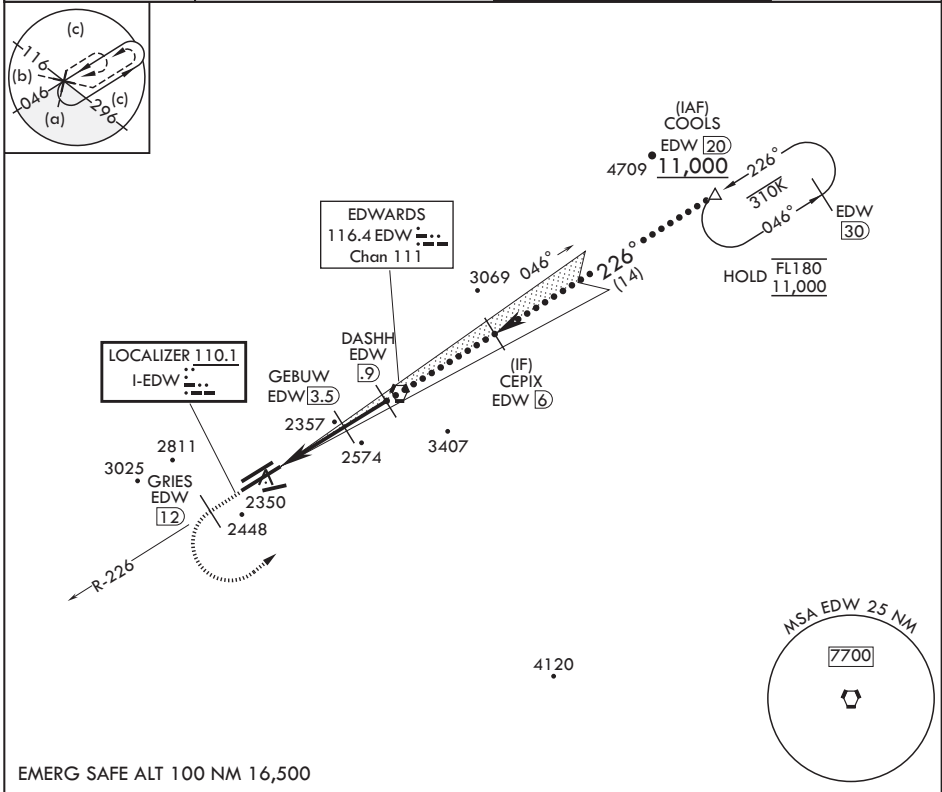
LOC I-EDW 110.1	APCH CRS 226°	Rwy Idg 15,017
		TDZE 2286
		Arpt Elev 2310

(USAF)

EDWARDS AFB (KEDW)

⚠ * Circling not authorized NW of Rwy 5L-23R. Circling not authorized at night to Rwy 5L-23R. MISSED APPROACH: Climb to 11,000. Track EDW VORTAC R-226 outbound to GRIES, then turn left direct COOLS and hold. Missed Approach requires use of RNAV or ATC RADAR monitoring.

ATIS * 127.425 269.9	JOSHUA APP CON/DEP CON 133.65 348.7	TOWER * 120.7 (CTAF) 318.1 (CTAF)	GND CON 121.8 225.4
--------------------------------	-----------------------------------------------	---------------------------------------------	-------------------------------



11,000 EDW R-226	GRIES EDW (12)	COOLS EDW (20)	COOLS EDW (20)	ELEV 2310	TDZE 2286
CATEGORY	C	D	E		
S-ILS 23L	2486-¾	200	(200-¾)		
S-LOC 23L	2540-¾	254	(300-¾)		
CIRCLING*	2880-1½ 569 (600-1½)	2880-2	569 (600-2)	HIRL Rwy 5R-23L REL Rwy 23L	

HI-ILS or LOC/DME Z RWY 23L

SW-3, 14 MAY 2026 to 11 JUN 2026

SW-3, 14 MAY 2026 to 11 JUN 2026