

EDWARDS, CALIFORNIA

HI-TACAN Z RWY 23L

VORTAC EDW 116.4 Chan 111	APCH CRS 226°	Rwy Idg TDZE Arprt Elev	15,017 2286 2310
---------------------------------	------------------	-------------------------------	------------------------

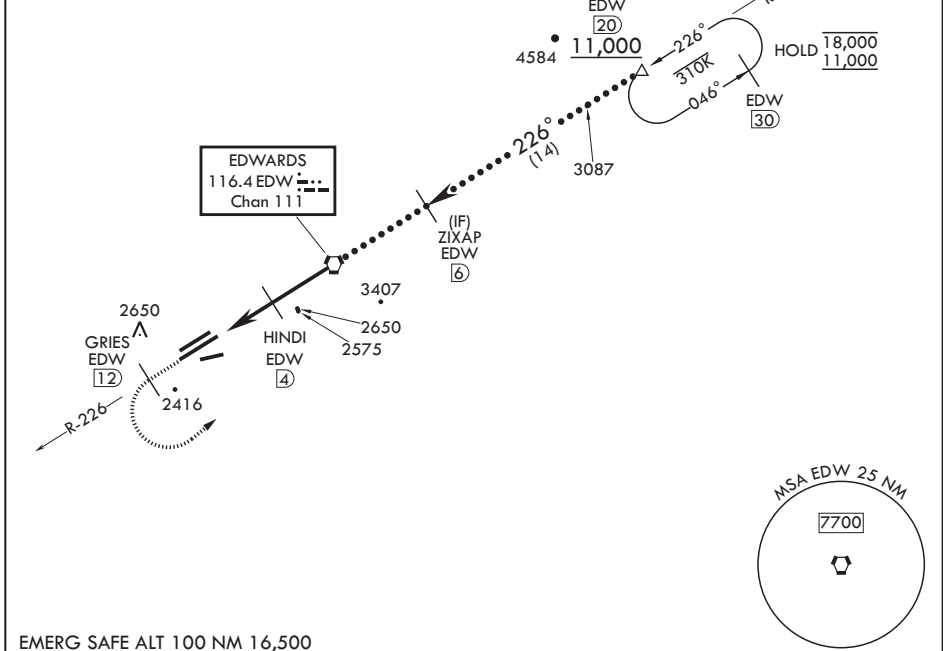
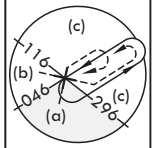
(USAF)

EDWARDS AFB (KEDW)

⚠ * Circling NA NW of Rwy 5L-23R. Circling not authorized at night to Rwy 5L-23R.

MISSED APPROACH: Climb to 11,000. Track EDW VORTAC R-226 outbound to GRIES, then turn left direct COOLS and hold. Missed Approach requires use of RNAV or ATC RADAR monitoring.

ATIS ★ 127.425 269.9	JOSHUA APP CON/DEP CON 133.65 348.7	TOWER ★ 120.7 (CTAF) 318.1 (CTAF)	GND CON 121.8 225.4
-------------------------	--	--------------------------------------	------------------------

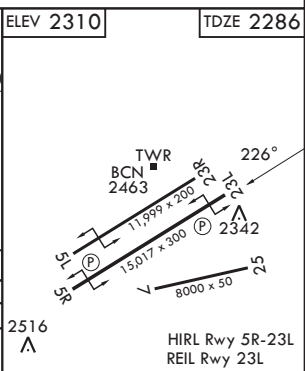


SW-3, 14 MAY 2026 to 11 JUN 2026

SW-3, 14 MAY 2026 to 11 JUN 2026

EMERG SAFE ALT 100 NM 16,500

11,000 EDW R-226	GRIES EDW (12)	COOLS EDW (20)	ELEV 2310	TDZE 2286
VGSIs and descent angles not coincident (VGSi Angle 3.00/TCH 49).				
CATEGORY	C	D	E	
S-23L	2640-1	354	(400-1)	
CIRCLING*	2880-1½ 569 (600-1½)	2880-2	569	(600-2)



EDWARDS, CALIFORNIA

34°54'N - 117°53'W

EDWARDS AFB (KEDW)

Amdt 1 30JAN20

HI-TACAN Z RWY 23L