

HI-TACAN Z RWY 5R

VORTAC EDW 116.4 Chan 111	APCH CRS 046°	Rwy Idg 15,017 TDZE 2302 Arprt Elev 2310
---	-------------------------	---

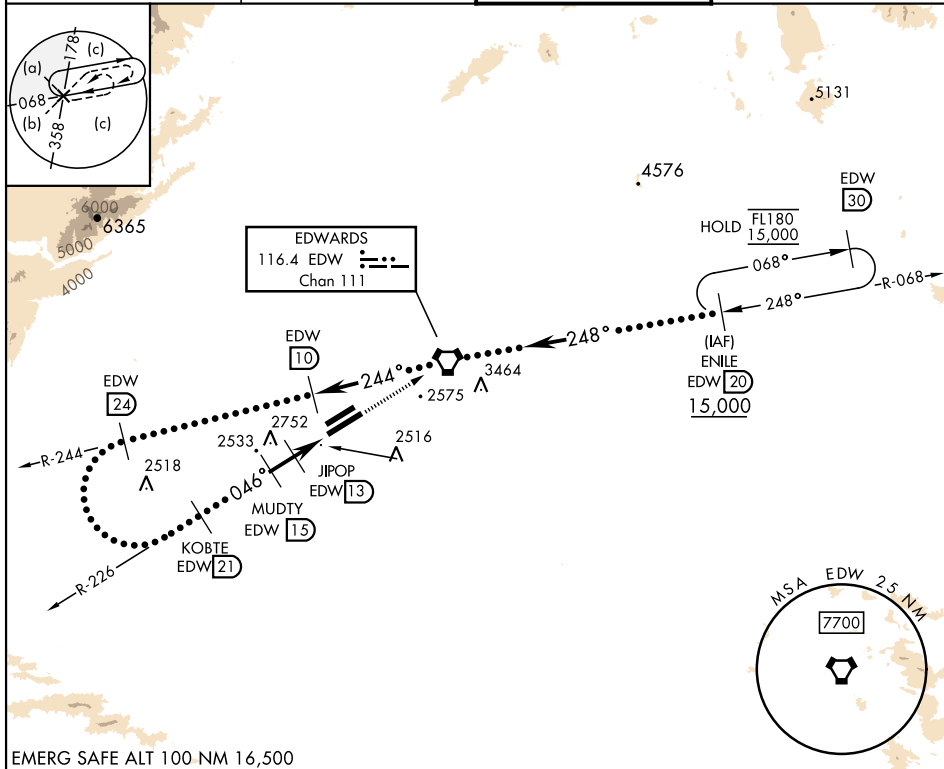
[USAF]

EDWARDS AFB (KEDW)

⚠ * Circling not authorized NW of Rwy 5L-23R.
 Circling not authorized at night to Rwy 5L-23R.

MISSED APPROACH: Track EDW VORTAC R-226 to EDW.
 Intercept EDW R-068 to ENILE and hold. Maintain 15,000.
 Missed approach requires use of RNAV or ATC RADAR monitoring.

ATIS ★ 127.425 269.9	JOSHUA APP CON 133.65 348.7	TOWER ★ 120.7 (CTAF) 318.1 (CTAF)	GND CON 121.8 225.4
--------------------------------	---------------------------------------	---	-------------------------------



EMERG SAFE ALT 100 NM 16,500

Remain within 28 NM	R-244 EDW 22	R-244 EDW 10	15,000 EDW R-226	ELEV 2310	TDZE 2302
	5700	15,000	EDW 10		
2.92° TCH 47	KOBTE R-226 EDW 21	MUDTY EDW 15	JPOPOP EDW 13	2463 TW R	2379
	5300	3900	EDW 11.5	11,999 × 200	15,017 × 300
		2 NM	3 NM	5R	23L
CATEGORY	C	D	E		
S-5R	2820-1½	517	(600-1½)		
CIRCLING *	2880-1½ 569 (600-1½)	2880-2	569 (600-2)	HIRL Rwy 5R-23L REIL Rwy 23L	

HI-TACAN Z RWY 5R

SW-3, 14 MAY 2026 to 11 JUN 2026

SW-3, 14 MAY 2026 to 11 JUN 2026