

EDWARDS, CALIFORNIA

RNAV (GPS) RWY 23L

APCH CRS 226°	Rwy Idg TDZE Arpt Elev	15,017 2286 2310
-------------------------	------------------------------	---

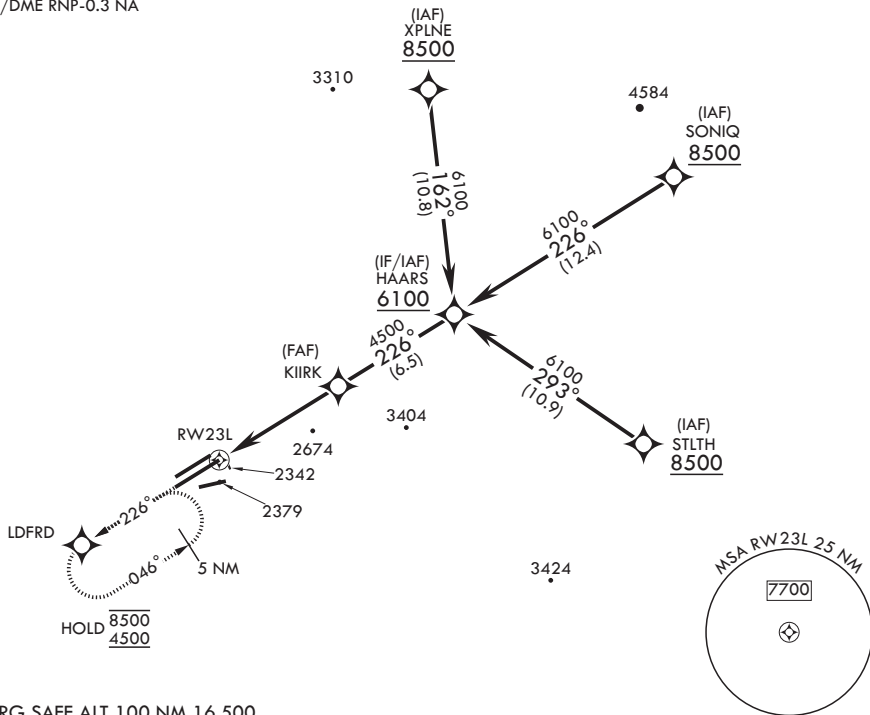
(USAF)

EDWARDS AFB (KEDW)

▽ * Circling not authorized NW of Rwy 5L-23R. MISSED APPROACH: Climb to 5700 direct LDFRD, continue climb-in-hold to 5700.

ATIS* 127.425 269.9	JOSHUA APP CON/DEP CON 133.65 348.7	TOWER* 120.7 (CTAF) 318.1 (CTAF)	GND CON 121.8 225.4
-------------------------------	---	--	-------------------------------

For uncompensated Baro-VNAV systems, Procedure NA below -19°C (-2°F) or above 54°C (130°F).
DME/DME RNP-0.3 NA



EMERG SAFE ALT 100 NM 16,500

5700	LDFRD	HAARS 6100	ELEV 2310	TDZE 2286	
RWY 23L 1 NM to RWY 23L		GP 3.00° TCH 51			
6.7 NM					
CATEGORY	A	B	C	D	E
LNAV/VNAV DA	2620-1		334	(400-1)	
LNAV MDA	2660-1		374	(400-1)	
CIRCLING*	2880-1 569 (600-1)		2880-1½ 569 (600-1½)	2880-2 569 (600-2)	
			HIRL Rwy 5R-23L REIL Rwy 23L		

EDWARDS, CALIFORNIA

34°54'N - 117°53'W

EDWARDS AFB (KEDW)

Amdt 1 30JAN20

RNAV (GPS) RWY 23L

SW-3, 14 MAY 2026 to 11 JUN 2026

SW-3, 14 MAY 2026 to 11 JUN 2026