

EDWARDS, CALIFORNIA

RNAV (GPS) RWY 5R

APCH CRS	Rwy Idg	15,017
046°	TDZE	2302
	Arprt Elev	2310

(USAF)

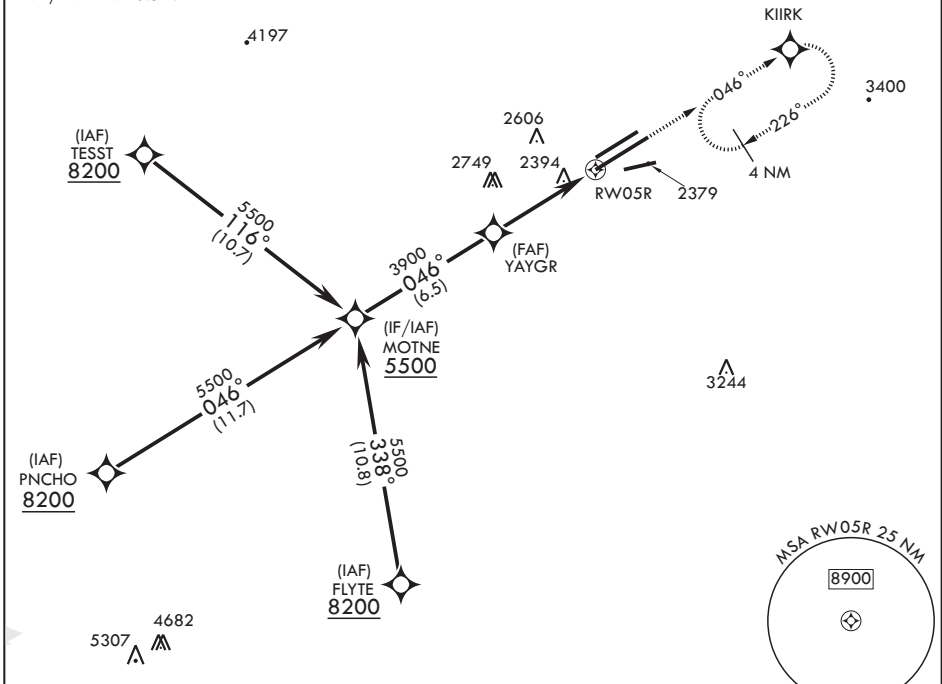
EDWARDS AFB (KEDW)

⚠ * Circling not authorized NW of Rwy 5L-23R. MISSED APPROACH: Climb to 5700 direct KIIRK and hold, continue climb-in-hold to 5700.

ATIS*	JOSHUA APP CON/DEP CON	TOWER*	GND CON
127.425 269.9	133.65 348.7	120.7 (CTAF) 318.1 (CTAF)	121.8 225.4

For uncompensated Baro VNAV systems, procedure NA below -19°C (-2°F) or above 54°C (130°F).

DME/DME RNP-0.3 NA



EMERG SAFE ALT 100 NM 16,500

MOTNE	VGSI and descent angles not coincident.		5700	KIIRK	ELEV 2310	TDZE 2302
5500	046°		↑	⊙	2680	
GP 3.00°	YAYGR	1.5 NM to RWY05R				
TCH 50	3900	4.8 NM				
CATEGORY	A	B	C	D	E	
LNAV/VNAV DA	2820-1 ³ / ₈		517	(600-1 ³ / ₈)		
LNAV MDA	2820-1	517 (600-1)	2820-1 ³ / ₈	517	(600-1 ³ / ₈)	
CIRCLING*	2880-1 569 (600-1)		2880-1 ¹ / ₂ 569 (600-1 ¹ / ₂)	2880-2 569 (600-2)		

EDWARDS, CALIFORNIA

34°54'N - 117°53'W

EDWARDS AFB (KEDW)

Amdt 1 30JAN20

RNAV (GPS) RWY 5R

SW-3, 14 MAY 2026 to 11 JUN 2026

SW-3, 14 MAY 2026 to 11 JUN 2026