

EDWARDS, CALIFORNIA

VOR/DME or TACAN Y RWY 23L

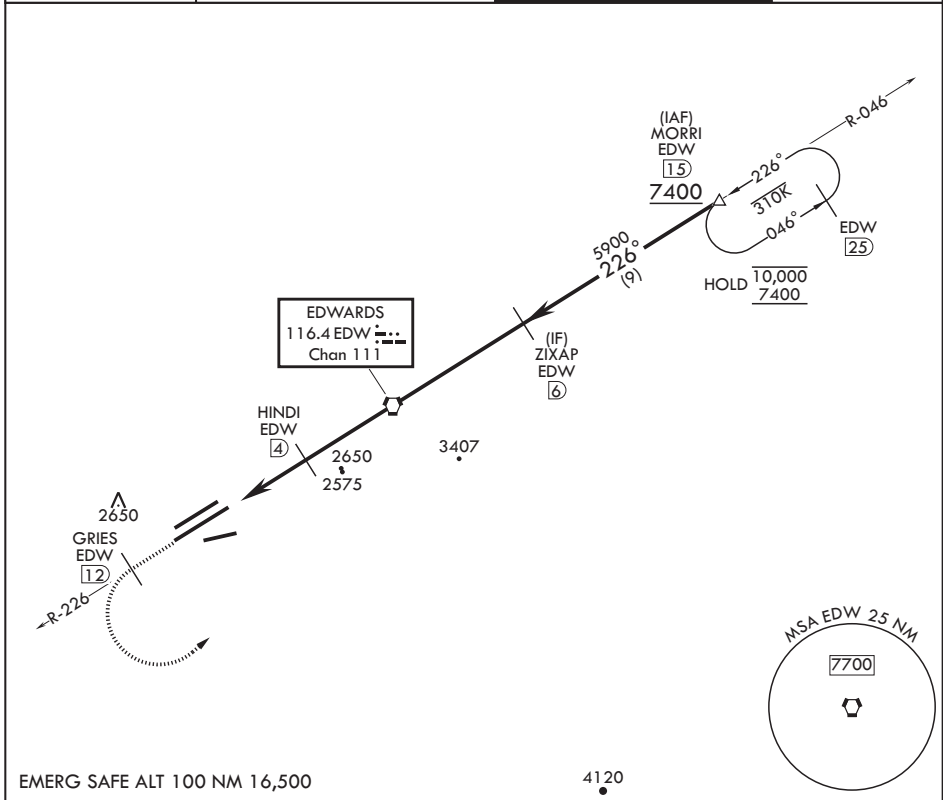
VORTAC EDW 116.4 Chan 111	APCH CRS 226°	Rwy ldg 15,017 TDZE 2286 Arprt Elev 2310
---------------------------------	------------------	---

(USAF)

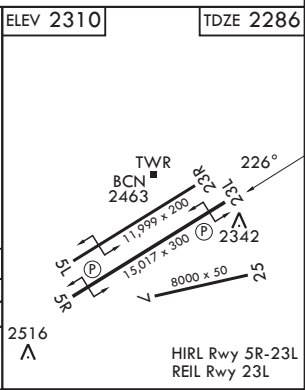
EDWARDS AFB (KEDW)

⚠ * Circling not authorized NW of Rwy 5L-23R. Circling not authorized at night to Rwy 5L-23R. **MISSED APPROACH:** Climb to 7400. Track EDW VORTAC R-226 outbound to GRIES, then turn left direct MORRI and hold. Missed Approach requires use of RNAV or ATC RADAR monitoring.

ATIS ★ 127.425 269.9	JOSHUA APP CON/DEP CON 133.65 348.7	TOWER ★ 120.7 (CTAF) 318.1 (CTAF)	GND CON 121.8 225.4
-------------------------	--	--------------------------------------	------------------------



7400 EDW R-226	GRIES EDW (12)	MORRI EDW (15)	MORRI (15)	ELEV 2310	TDZE 2286
VGSIs and descent angles not coincident (VGSi Angle 3.00/TCH 49). HUBNO (7) 3300, HINDI (4) 4500, VORTAC 4500, ZIXAP (6) 5900, MORRI (15) 7400. TCH 49, 2.71°					
CATEGORY: A, B, C, D, E S-23L: 2640-1, 354, (400-1) CIRCLING*: 2880-1 569 (600-1), 2880-1½ 569 (600-1½), 2880-2 569 (600-2)					
EDWARDS, CALIFORNIA 34°54'N - 117°53'W EDWARDS AFB (KEDW) Amdt 2 23APR20					



SW-3, 14 MAY 2026 to 11 JUN 2026

SW-3, 14 MAY 2026 to 11 JUN 2026

VOR/DME or TACAN Y RWY 23L